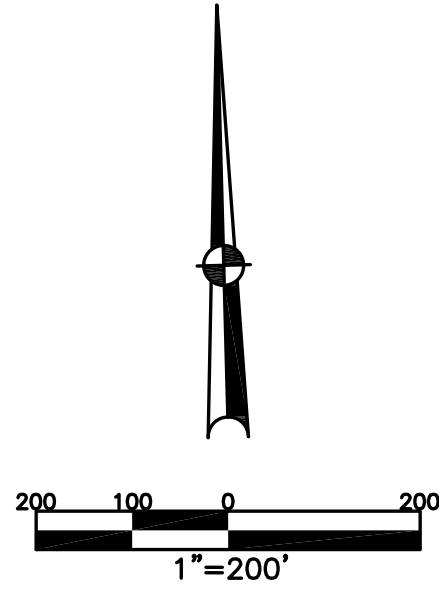


BETHEL TWP.
MIAMI COUNTY, OHIO

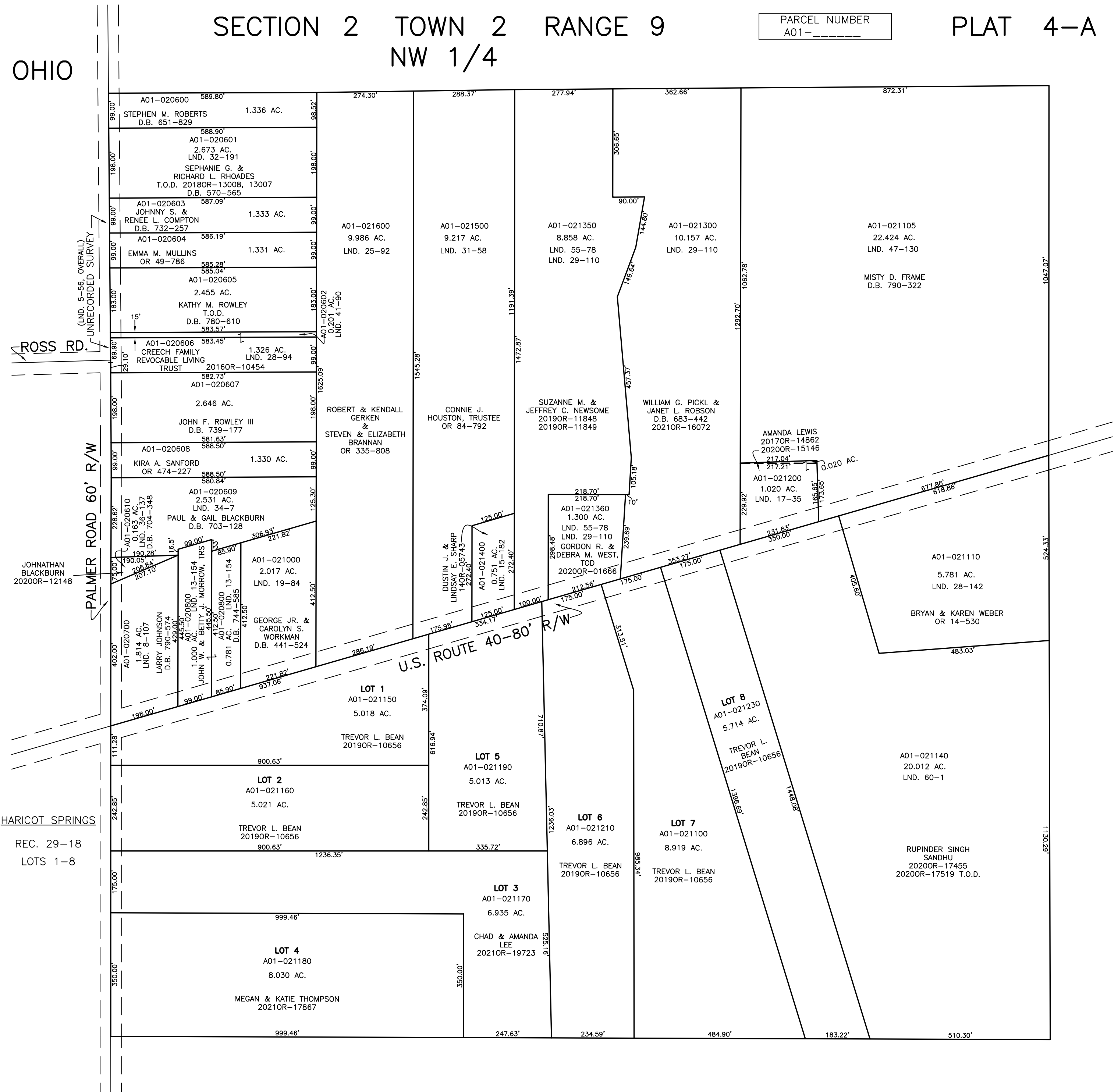
SECTION 2 TOWN 2 RANGE 9
NW 1/4

PARCEL NUMBER
A01-_____

PLAT 4-A



ABBREVIATION LEGEND		
20140R-07759	=	RECORDER'S DOCUMENT NUMBER
OR 257-619	=	OFFICIAL RECORD 257 PAGE 619
D.B. 613-172	=	DEED BOOK 613, PAGE 172
REC. 15-72	=	RECORDER'S PLAT BOOK 15, PAGE 72
LND. 33-15	=	LAND SURVEY VOLUME 33, PAGE 15
LOT 19-12	=	LOT SURVEY VOLUME 19, PAGE 12
R.R. 8-29	=	ROAD RECORD VOLUME 8, PAGE 29
R/W	=	RIGHT OF WAY
C	=	CENTERLINE
AC.	=	ACRES
TWP.	=	TOWNSHIP
TR.	=	TRACT
Ⓢ	=	LOT CREATED BY RECORDER'S PLAT
LINE LEGEND		
	=	Blow-up Boundary
	=	Property Line
	=	Lot Split Line
	=	Section Line
	=	Centerline
	=	Right-of-Way Line
	=	Corporation Line
SURVEY INDEX		
LND. 2-9	LND. 31-58	REC. 29-18
LND. 5-56	LND. 32-191	
LND. 8-107	LND. 34-7	
LND. 13-154	LND. 36-137	
LND. 15-182	LND. 41-90	
LND. 17-35	LND. 47-130	
LND. 19-84	LND. 55-78	
LND. 25-92	LND. 60-1	
LND. 28-94		
LND. 28-142		
LND. 29-110		



PREPARED BY: MIAMI COUNTY ENGINEER'S MAP DEPARTMENT
PAUL P. HUELSKAMP, P.E., P.S., COUNTY ENGINEER
DATE: FEBRUARY 23, 2016 MB
REVISED: November 15, 2021 APALMER