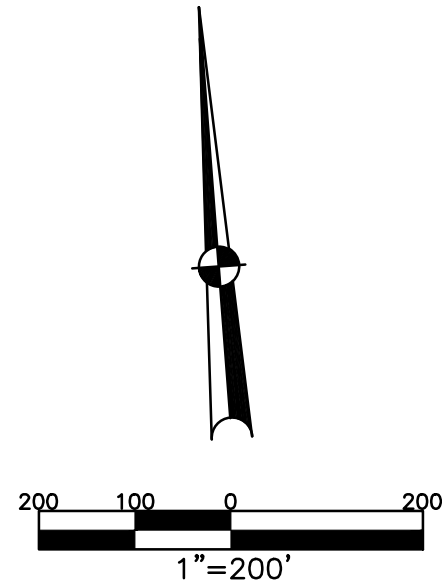


BETHEL TWP.
MIAMI COUNTY, OHIO

SECTION 5 TOWN 2 RANGE 9
SOUTHEAST QUARTER

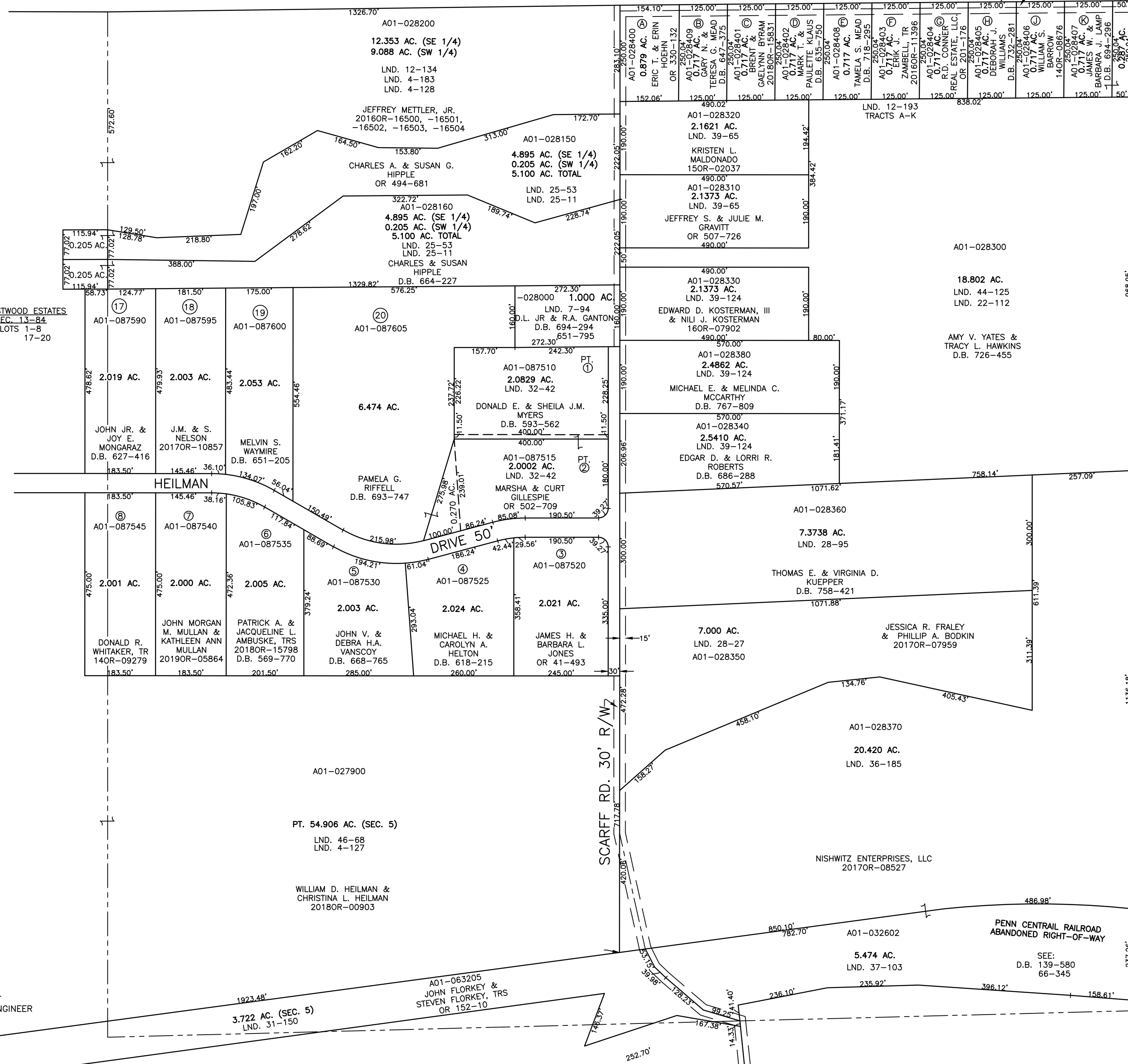
PARCEL NUMBER
A01-_____

PLAT 8-C



ABBREVIATION LEGEND		
2014OR-07759	=	RECORDER'S DOCUMENT NUMBER
OR 257-619	=	OFFICIAL RECORD 257 PAGE 619
D.B. 613-172	=	DEED BOOK 613, PAGE 172
REC. 15-72	=	RECORDER'S PLAT BOOK 15, PAGE 72
LND. 33-15	=	LAND SURVEY VOLUME 33, PAGE 15
LOT 19-12	=	LOT SURVEY VOLUME 19, PAGE 12
R.R. 8-29	=	ROAD RECORD VOLUME 8, PAGE 29
R/W	=	RIGHT OF WAY
⊕	=	CENTERLINE
AC.	=	ACRES
TWP.	=	TOWNSHIP
TR.	=	TRACT
Ⓢ	=	LOT CREATED BY RECORDER'S PLAT
LINE LEGEND		
	=	Blow-up Boundary
	=	Property Line
	=	Lot Split Line
	=	Section Line
	=	Centerline
	=	Right-of-Way Line
	=	Corporation Line
SURVEY INDEX		
LND. 4-127	LND. 28-95	REC. 13-84
LND. 4-128	LND. 31-150	RD. REC. 6-282
LND. 4-183	LND. 32-42	
LND. 7-94	LND. 36-185	
LND. 12-134	LND. 37-103	
LND. 12-193	LND. 39-65	
LND. 22-112	LND. 39-124	
LND. 25-11	LND. 44-125	
LND. 25-53	LND. 46-68	
LND. 28-27		

LOCUSTWOOD ESTATES
REC. 13-84
LOTS 1-8
17-20



RD. REC. 6-282

PREPARED BY: MIAMI COUNTY ENGINEER'S MAP DEPARTMENT
PAUL P. HUELSKAMP, P.E., P.S., COUNTY ENGINEER
DATE: JULY 20, 2015 MB
REVISED: June 5, 2019 DSTUMPF