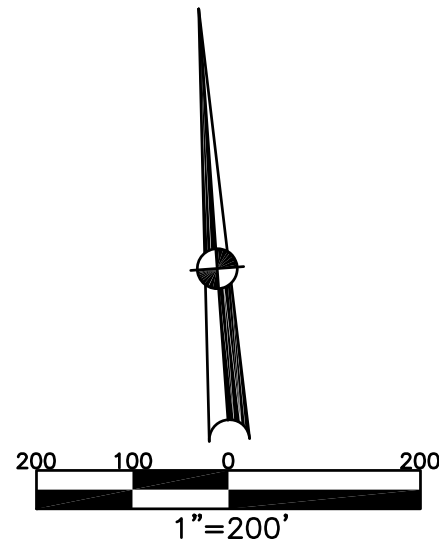


BETHEL TWP.
MIAMI COUNTY, OHIO

SECTION 6 TOWN 2 RANGE 9
PT. NW 1/4

PARCEL NUMBER
A01-00000

PLAT 10-A

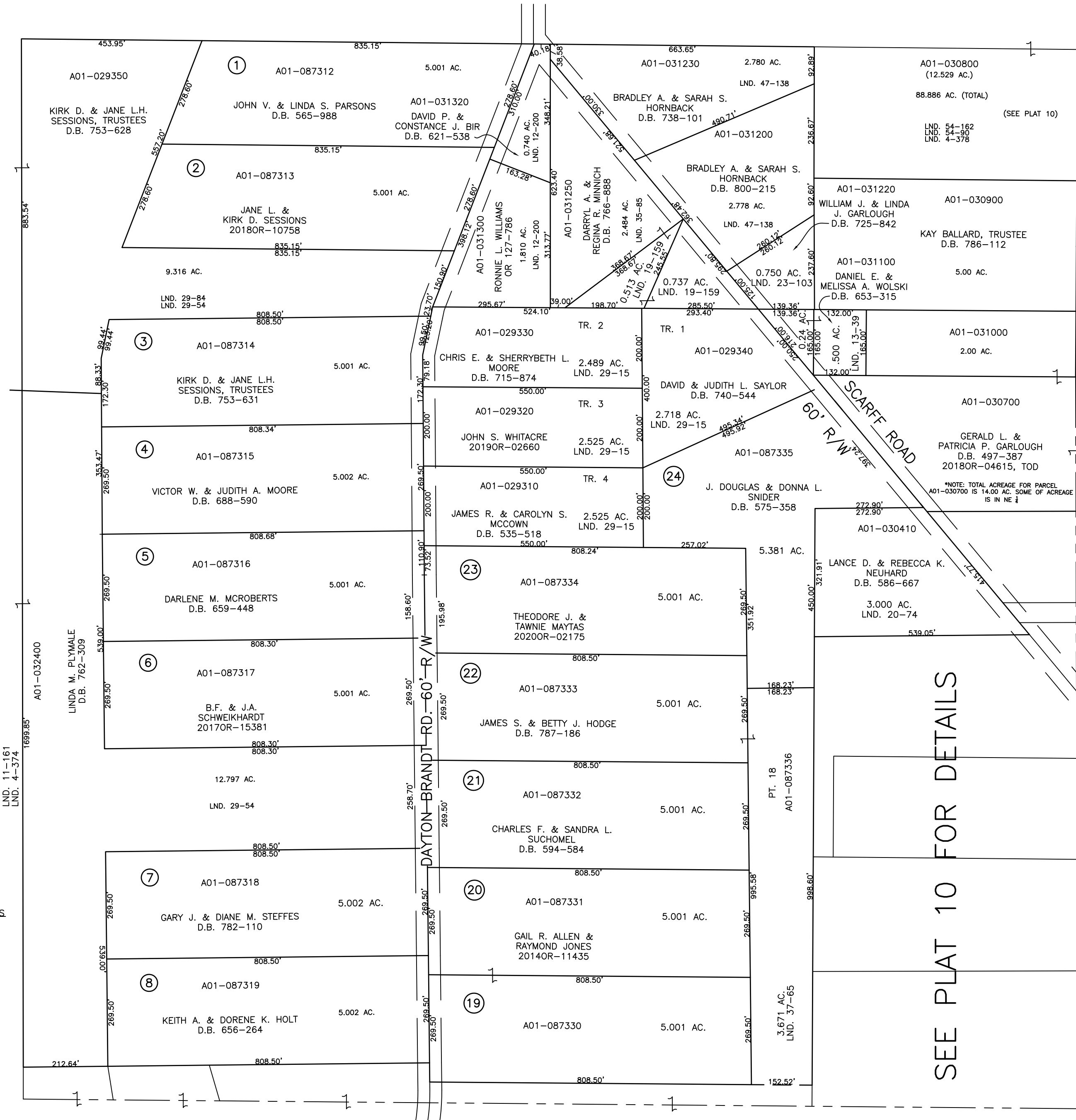


ABBREVIATION LEGEND		
20140R-07759	=	RECORDER'S DOCUMENT NUMBER
OR 257-619	=	OFFICIAL RECORD 257 PAGE 619
D.B. 613-172	=	DEED BOOK 613, PAGE 172
REC. 15-72	=	RECORDER'S PLAT BOOK 15, PAGE 72
LND. 33-15	=	LAND SURVEY VOLUME 33, PAGE 15
LOT 19-12	=	LOT SURVEY VOLUME 19, PAGE 12
R.R. 8-29	=	ROAD RECORD VOLUME 8, PAGE 29
R/W	=	RIGHT OF WAY
CL	=	CENTERLINE
AC.	=	ACRES
TWP.	=	TOWNSHIP
TR.	=	TRACT
②	=	LOT CREATED BY RECORDER'S PLAT

LINE LEGEND	
	Blow-up Boundary
	Property Line
	Lot Split Line
	Section Line
	Centerline
	Right-of-Way Line
	Corporation Line

SURVEY INDEX		
LND. 4-374	LND. 33-74	REC. 12-127
LND. 4-378	LND. 35-85	
LND. 11-161	LND. 37-65	
LND. 12-200	LND. 47-138	
LND. 13-39	LND. 54-90	
LND. 18-106	LND. 54-162	
LND. 19-159		
LND. 20-74		
LND. 23-103		
LND. 25-84		
LND. 29-15		
LND. 29-54		
LND. 29-84		
LND. 33-73		

TERRA ESTATES
REC. 12-127
LOTS 1-24



SEE PLAT 10 FOR DETAILS

PREPARED BY: MIAMI COUNTY ENGINEER'S MAP DEPARTMENT
PAUL P. HUELSKAMP, P.E., P.S., COUNTY ENGINEER
DATE: JULY 30, 2014 MB

REVISED: February 19, 2020 IGRIFIN