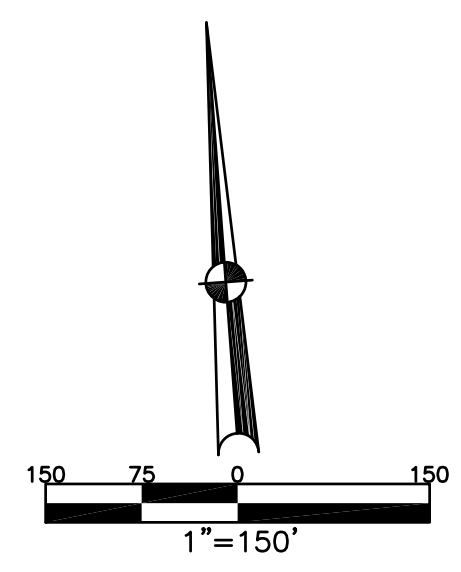
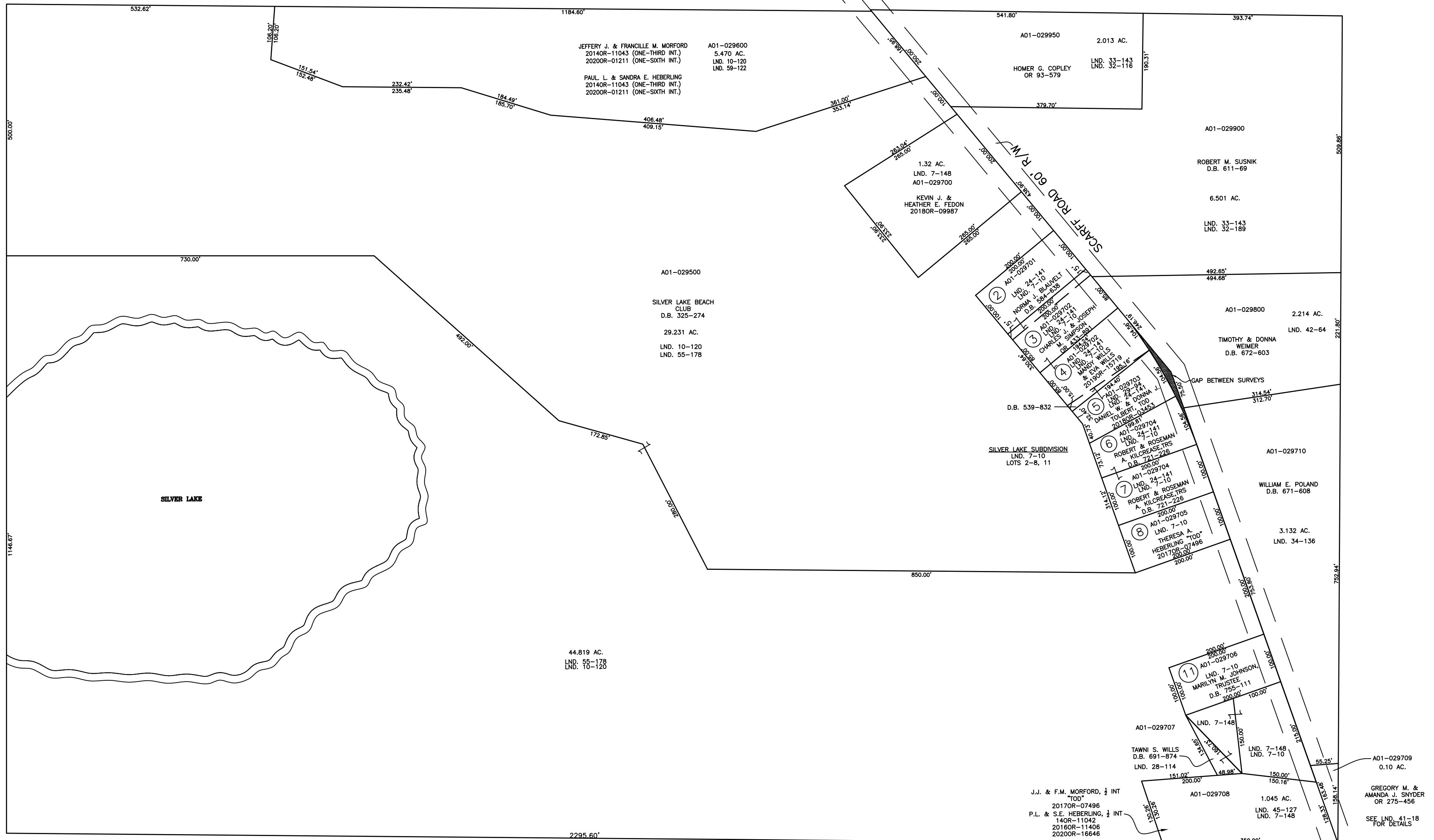


BETHEL TWP.  
MIAMI COUNTY, OHIO

SECTION 6 TOWN 2 RANGE 9  
PT. SE 1/4

PARCEL NUMBER  
A01-029900

PLAT 10-B



ABBREVIATION LEGEND	
2014OR-07759	= RECORDER'S DOCUMENT NUMBER
OR 257-619	= OFFICIAL RECORD 257 PAGE 619
D.B. 613-172	= DEED BOOK 613, PAGE 172
REC. 15-72	= RECORDER'S PLAT BOOK 15, PAGE 72
LND. 33-15	= LAND SURVEY VOLUME 33, PAGE 15
LOT 19-12	= LOT SURVEY VOLUME 19, PAGE 12
R.R. 8-29	= ROAD RECORD VOLUME 8, PAGE 29
R/W	= RIGHT OF WAY
Ⓢ	= CENTERLINE
AC.	= ACRES
TWP.	= TOWNSHIP
TR.	= TRACT
Ⓢ	= LOT CREATED BY RECORDER'S PLAT

LINE LEGEND	
	Blow-up Boundary
	Property Line
	Lot Split Line
	Section Line
	Centerline
	Right-of-Way Line
	Corporation Line

SURVEY INDEX		
LND. 7-10	LND. 32-189	LND. 59-122
LND. 7-148	LND. 33-143	
LND. 10-120	LND. 34-136	
LND. 24-41	LND. 41-18	
LND. 28-114	LND. 42-64	
LND. 29-94	LND. 45-127	
LND. 32-116	LND. 55-178	

PREPARED BY: MIAMI COUNTY ENGINEER'S MAP DEPARTMENT  
PAUL P. HUELSKAMP, P.E., P.S., COUNTY ENGINEER  
DATE: JULY 28, 2014 MB  
REVISED: November 10, 2020 IGRIFIN

A01-029709  
0.10 AC.  
GREGORY M. &  
AMANDA J. SNYDER  
OR 275-456  
SEE LND. 41-18  
FOR DETAILS