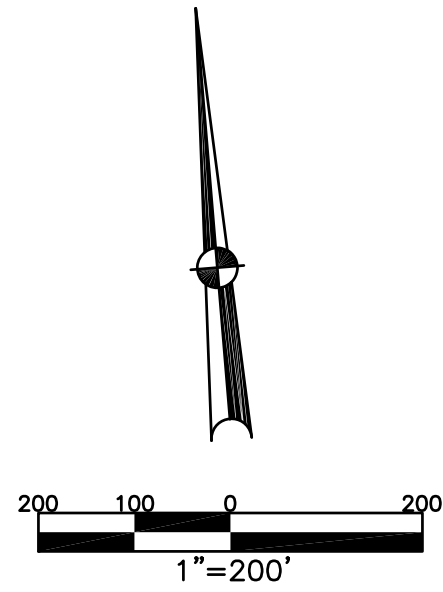


BETHEL TWP.
MIAMI COUNTY, OHIO

SECTION 8 TOWN 2 RANGE 9
NE 1/4

PARCEL NUMBER
A01-_____

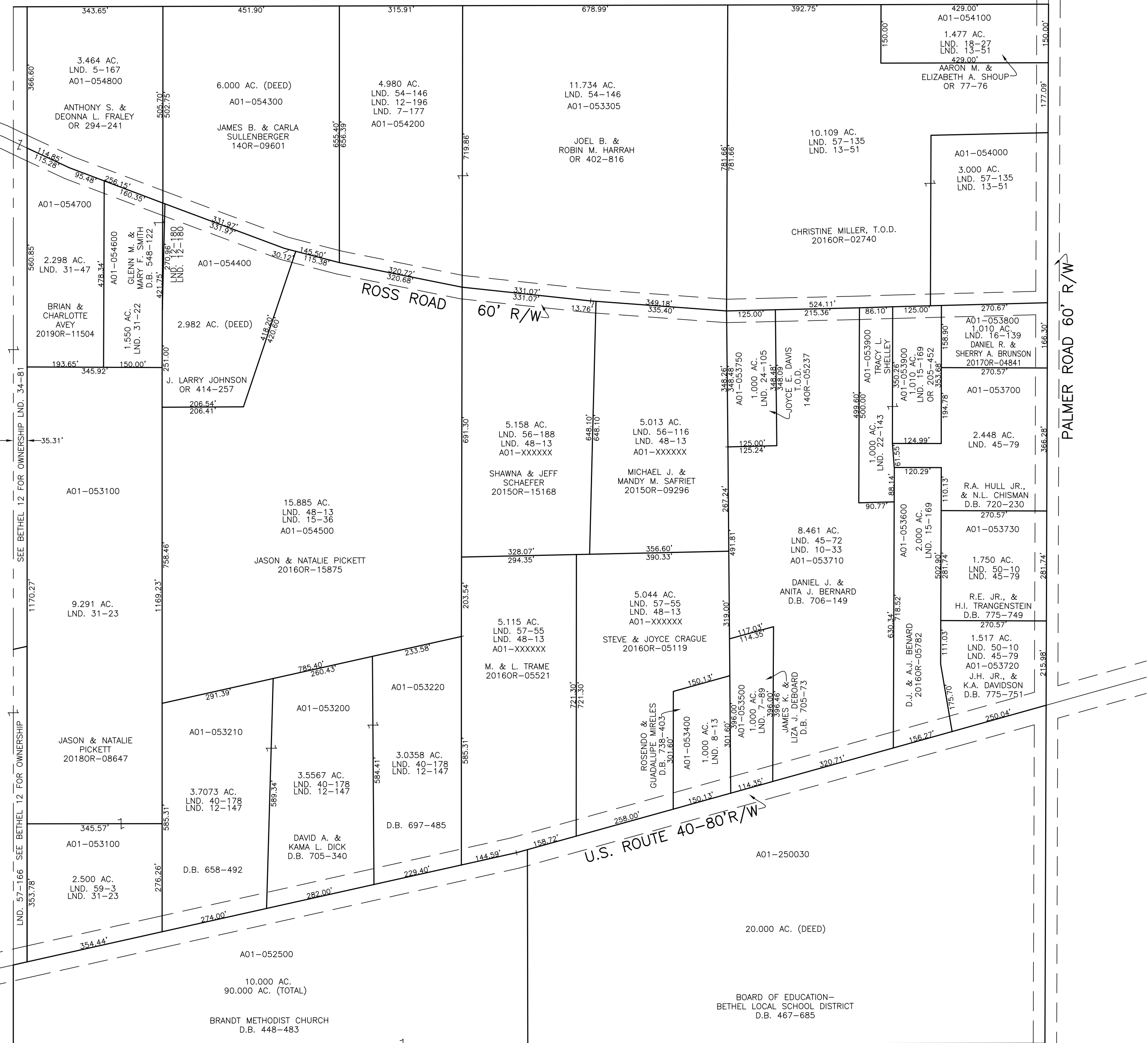
PLAT 12-A



ABBREVIATION LEGEND	
2014OR-07759	= RECORDER'S DOCUMENT NUMBER
OR 257-619	= OFFICIAL RECORD 257 PAGE 619
D.B. 613-172	= DEED BOOK 613, PAGE 172
REC. 15-72	= RECORDER'S PLAT BOOK 15, PAGE 72
LND. 33-15	= LAND SURVEY VOLUME 33, PAGE 15
LOT 19-12	= LOT SURVEY VOLUME 19, PAGE 12
R.R. 8-29	= ROAD RECORD VOLUME 8, PAGE 29
R/W	= RIGHT OF WAY
C	= CENTERLINE
AC.	= ACRES
TWP.	= TOWNSHIP
TR.	= TRACT
Ⓢ	= LOT CREATED BY RECORDER'S PLAT

LINE LEGEND	
	Blow-up Boundary
	Property Line
	Lot Split Line
	Section Line
	Centerline
	Right-of-Way Line
	Corporation Line

SURVEY INDEX	
LND. 5-167	LND. 45-72
LND. 7-89	LND. 45-79
LND. 7-177	LND. 48-13
LND. 8-13	LND. 50-10
LND. 10-33	LND. 54-146
LND. 12-147	LND. 56-116
LND. 12-196	LND. 56-188
LND. 13-51	LND. 57-55
LND. 15-36	LND. 57-135
LND. 15-169	LND. 57-166
LND. 16-139	LND. 59-3
LND. 18-27	
LND. 22-143	
LND. 31-22	
LND. 31-23	
LND. 31-47	
LND. 34-198	
LND. 40-178	



PREPARED BY: MIAMI COUNTY ENGINEER'S MAP DEPARTMENT
PAUL P. HUELSKAMP, P.E., P.S., COUNTY ENGINEER
DATE: NOVEMBER 3, 2015 MB

REVISED: October 3, 2019 ASMITH