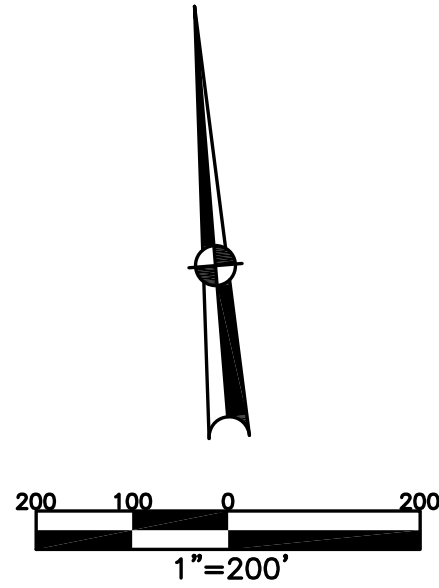


BETHEL TWP.
MIAMI COUNTY, OHIO

SECTION 9 TOWN 2 RANGE 9

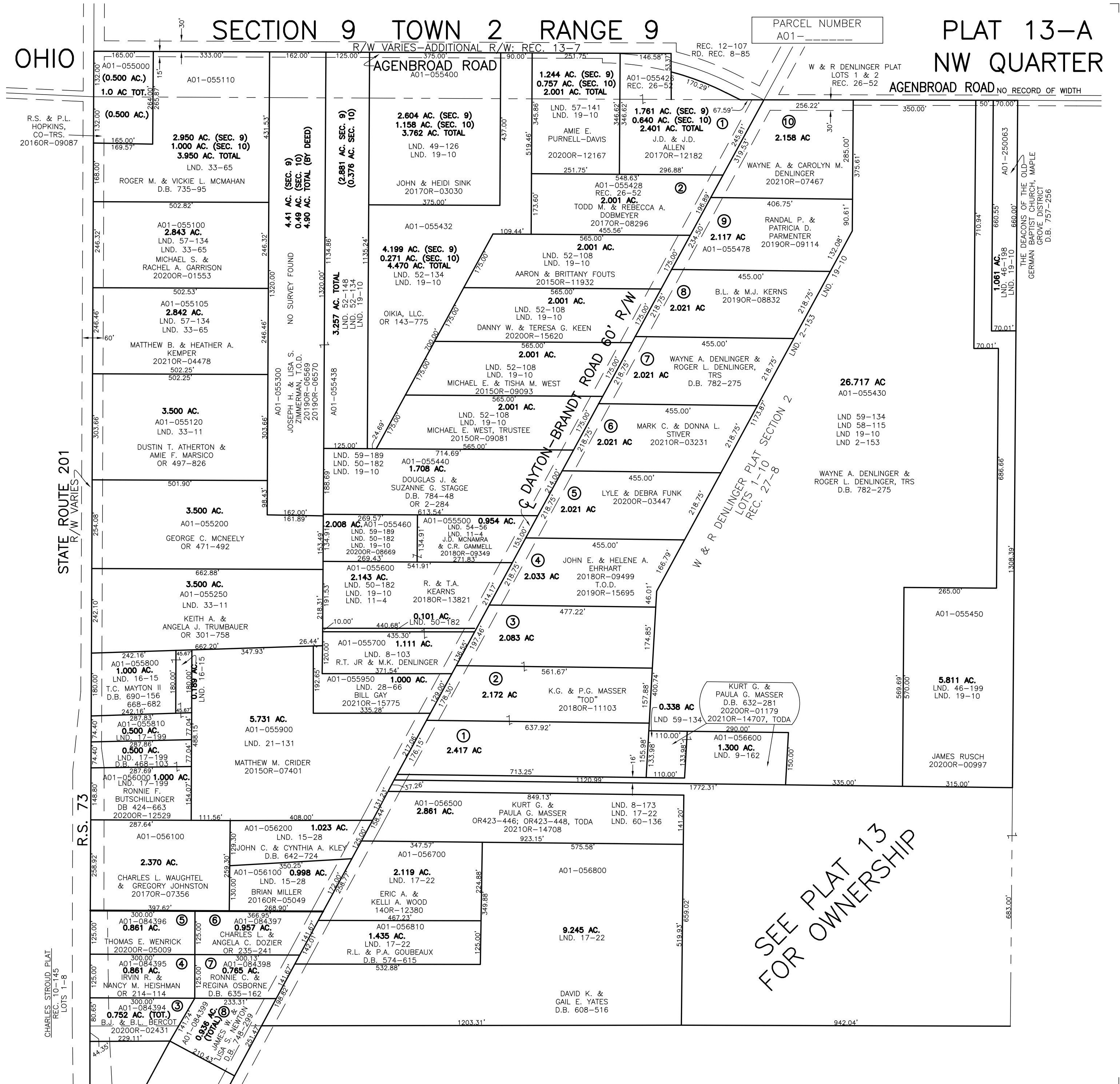
PLAT 13-A
NW QUARTER



ABBREVIATION LEGEND		
20140R-07759	=	RECORDER'S DOCUMENT NUMBER
OR 257-619	=	OFFICIAL RECORD 257 PAGE 619
D.B. 613-172	=	DEED BOOK 613, PAGE 172
REC. 15-72	=	RECORDER'S PLAT BOOK 15, PAGE 72
LND. 33-15	=	LAND SURVEY VOLUME 33, PAGE 15
LOT 19-12	=	LOT SURVEY VOLUME 19, PAGE 12
R.R. 8-29	=	ROAD RECORD VOLUME 8, PAGE 29
R/W	=	RIGHT OF WAY
CL	=	CENTERLINE
AC.	=	ACRES
TWP.	=	TOWNSHIP
TR.	=	TRACT
②	=	LOT CREATED BY RECORDER'S PLAT

LINE LEGEND		
	=	Blow-up Boundary
	=	Property Line
	=	Lot Split Line
	=	Section Line
	=	Centerline
	=	Right-of-Way Line
	=	Corporation Line

SURVEY INDEX		
LND. 2-153	LND. 37-114	REC. 10-145
LND. 2-154	LND. 46-198	REC. 12-107
LND. 3-248	LND. 46-199	REC. 13-7
LND. 4-422	LND. 49-126	REC. 26-52
LND. 8-103	LND. 50-182	REC. 27-8
LND. 8-173	LND. 52-108	
LND. 9-162	LND. 52-134	RD. REC. 8-85
LND. 11-4	LND. 52-148	
LND. 15-28	LND. 54-56	
LND. 16-15	LND. 57-134	R.S. 73
LND. 16-69	LND. 57-141	
LND. 17-22	LND. 58-115	
LND. 17-199	LND. 59-134	
LND. 19-10	LND. 59-189	
LND. 21-126		
LND. 21-131		
LND. 28-66		
LND. 33-11		
LND. 33-65		



SEE PLAT 13
FOR OWNERSHIP

PREPARED BY: MIAMI COUNTY ENGINEER'S MAP DEPARTMENT
PAUL P. HUELSKAMP, P.E., P.S., COUNTY ENGINEER
DATE: MARCH 2, 2016 MB
REVISED: September 13, 2021 NINAMDR