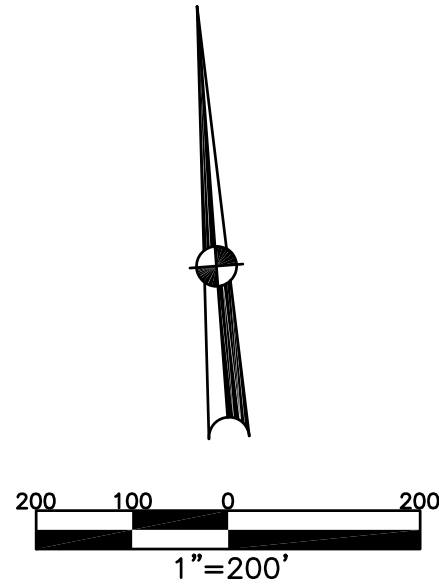


BETHEL TWP.
MIAMI COUNTY, OHIO

SECTION 10 TOWN 2 RANGE 9
SE 1/4

PARCEL NUMBER
A01-_____

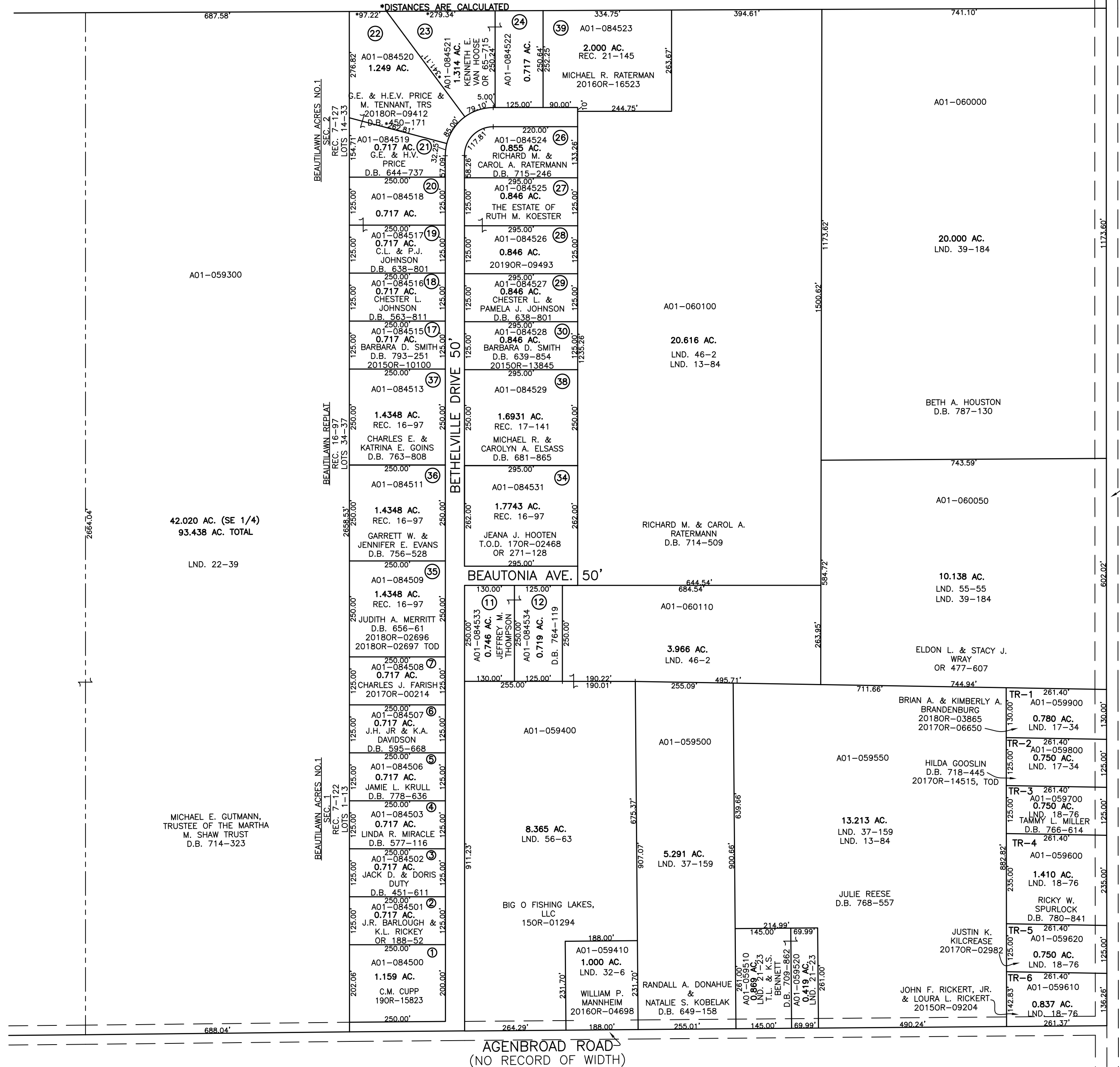
PLAT 14-A



ABBREVIATION LEGEND	
2014OR-07759	= RECORDER'S DOCUMENT NUMBER
OR 257-619	= OFFICIAL RECORD 257 PAGE 619
D.B. 613-172	= DEED BOOK 613, PAGE 172
REC. 15-72	= RECORDER'S PLAT BOOK 15, PAGE 72
LND. 33-15	= LAND SURVEY VOLUME 33, PAGE 15
LOT 19-12	= LOT SURVEY VOLUME 19, PAGE 12
R.R. 8-29	= ROAD RECORD VOLUME 8, PAGE 29
R/W	= RIGHT OF WAY
CL	= CENTERLINE
AC.	= ACRES
TWP.	= TOWNSHIP
TR.	= TRACT
Ⓢ	= LOT CREATED BY RECORDER'S PLAT

LINE LEGEND	
	Blow-up Boundary
	Property Line
	Lot Split Line
	Section Line
	Centerline
	Right-of-Way Line
	Corporation Line

SURVEY INDEX		
LND. 2-153		REC. 7-122
LND. 2-154		REC. 7-127
LND. 13-84		REC. 16-97
LND. 17-34		REC. 17-141
LND. 18-76		REC. 21-145
LND. 21-23		
LND. 22-39		
LND. 32-6		
LND. 37-159		
LND. 39-184		
LND. 46-2		
LND. 55-55		
LND. 56-63		



PREPARED BY: MIAMI COUNTY ENGINEER'S MAP DEPARTMENT
PAUL P. HUELSKAMP, P.E., P.S., COUNTY ENGINEER
DATE: JULY 27, 2015 MB

REVISED: December 31, 2019 DVENTURA