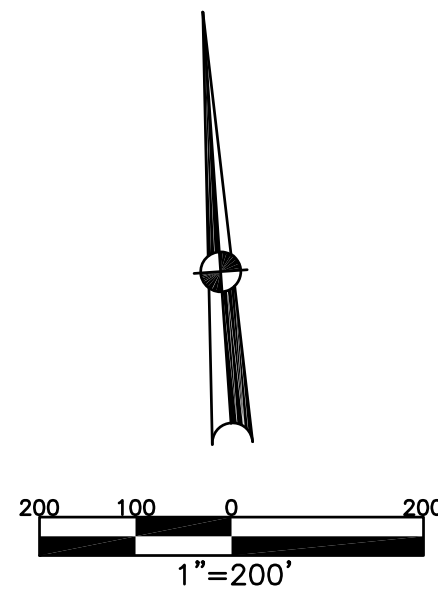


BETHEL TWP.  
MIAMI COUNTY, OHIO

SECTION 17 TOWN 2 RANGE 9  
SOUTHEAST QUARTER

PARCEL NUMBER  
A01-00000

PLAT 21-A



ABBREVIATION LEGEND		
2014OR-07759	=	RECORDER'S DOCUMENT NUMBER
OR 257-619	=	OFFICIAL RECORD 257 PAGE 619
D.B. 613-172	=	DEED BOOK 613, PAGE 172
REC. 15-72	=	RECORDER'S PLAT BOOK 15, PAGE 72
LND. 33-15	=	LAND SURVEY VOLUME 33, PAGE 15
LOT 19-12	=	LOT SURVEY VOLUME 19, PAGE 12
R.R. 8-29	=	ROAD RECORD VOLUME 8, PAGE 29
R/W	=	RIGHT OF WAY
C	=	CENTERLINE
AC.	=	ACRES
TWP.	=	TOWNSHIP
TR.	=	TRACT
Ⓢ	=	LOT CREATED BY RECORDER'S PLAT

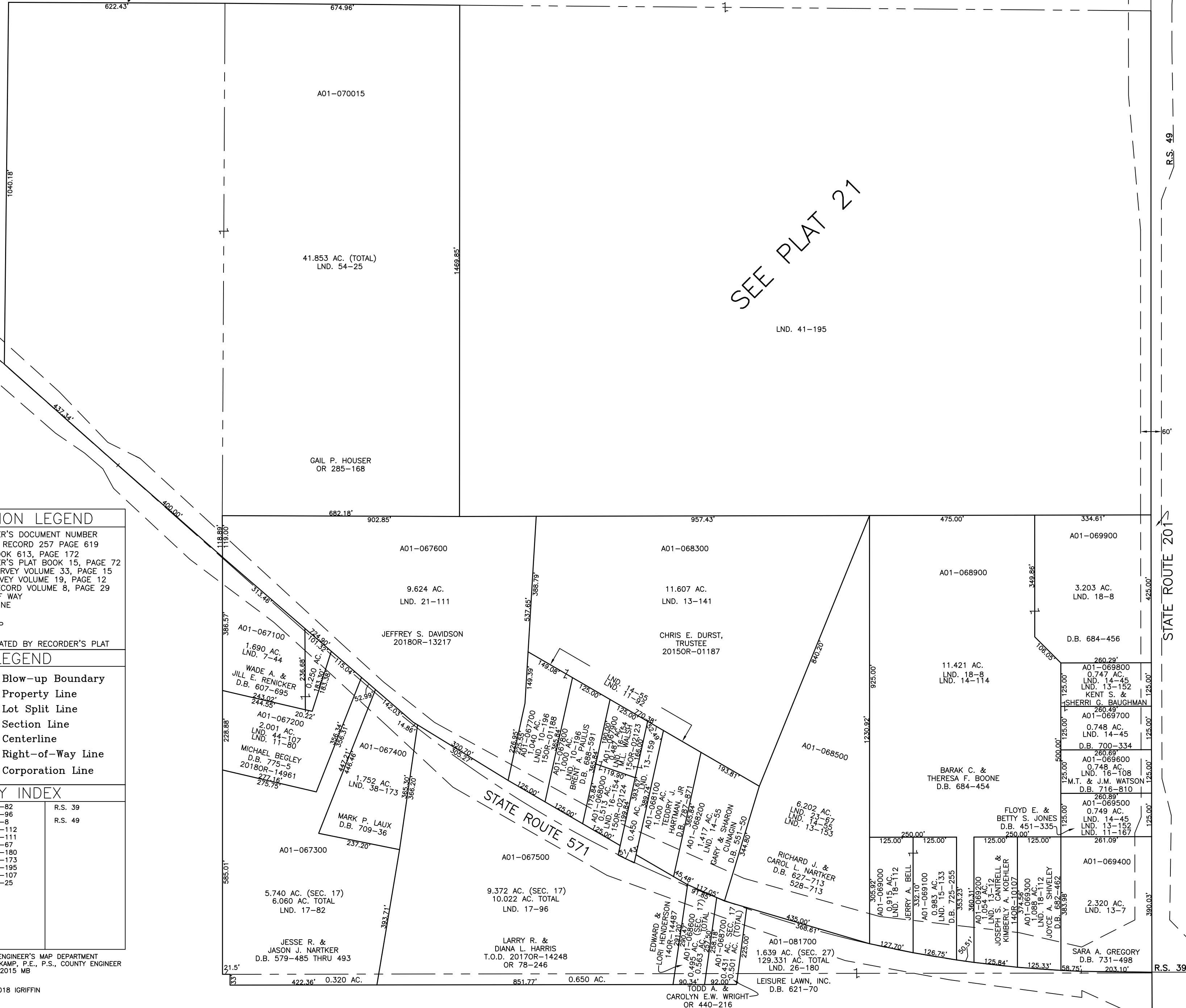
  

LINE LEGEND	
	Blow-up Boundary
	Property Line
	Lot Split Line
	Section Line
	Centerline
	Right-of-Way Line
	Corporation Line

SURVEY INDEX		
LND. 1-123	LND. 17-82	R.S. 39
LND. 7-44	LND. 17-96	
LND. 10-144	LND. 18-8	R.S. 49
LND. 10-196	LND. 18-112	
LND. 11-80	LND. 21-111	
LND. 11-92	LND. 23-67	
LND. 11-167	LND. 26-180	
LND. 13-7	LND. 38-173	
LND. 13-12	LND. 41-195	
LND. 13-141	LND. 44-107	
LND. 13-152	LND. 54-25	
LND. 13-153		
LND. 13-159		
LND. 14-45		
LND. 14-55		
LND. 14-114		
LND. 15-133		
LND. 16-108		
LND. 16-154		

PREPARED BY: MIAMI COUNTY ENGINEER'S MAP DEPARTMENT  
PAUL P. HUELSKAMP, P.E., P.S., COUNTY ENGINEER  
DATE: DECEMBER 21, 2015 MB  
REVISED: December 5, 2018 IGRIFIN



SEE PLAT 21

R.S. 49

STATE ROUTE 201

STATE ROUTE 571

R.S. 39