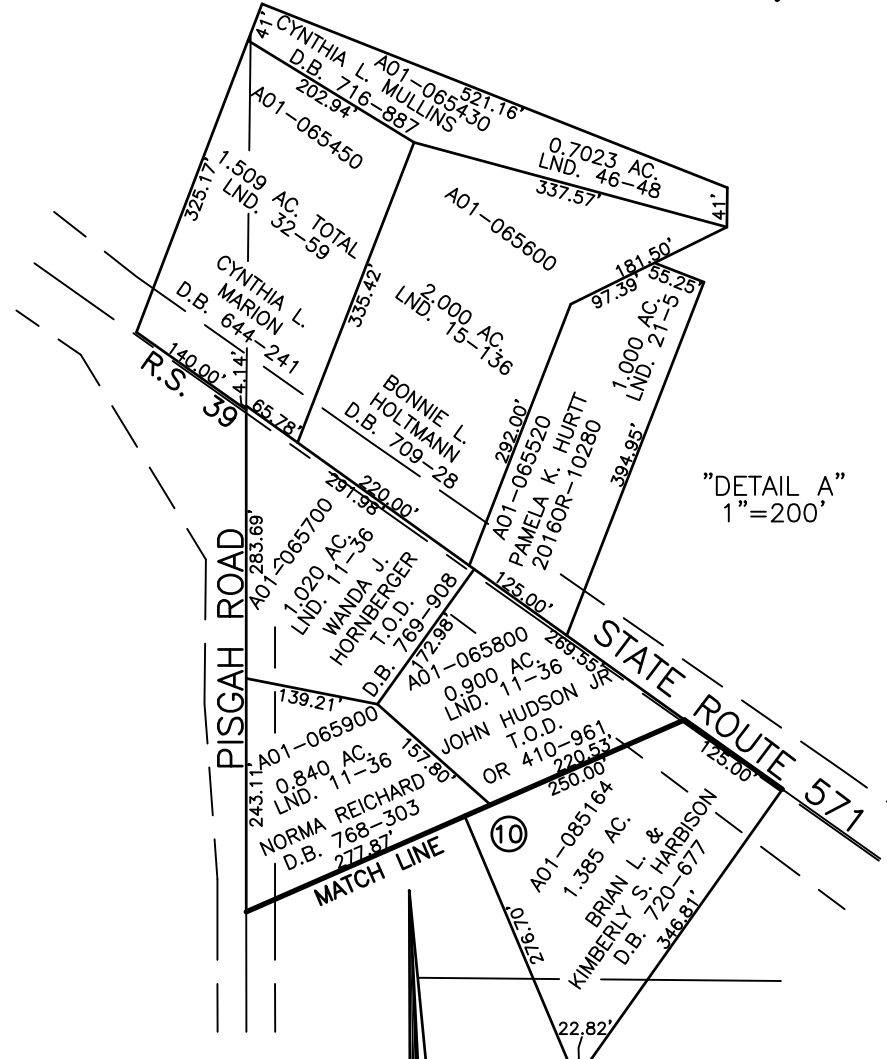


BETHEL TWP.
MIAMI COUNTY, OHIO

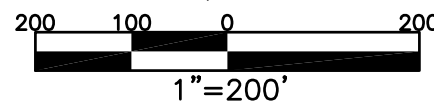
SECTION 17 TOWN 2 RANGE 9
SW 1/4

PARCEL NUMBER
A01-00000

PLAT 21-B



"DETAIL A"
1"=200'



ABBREVIATION LEGEND

20140R-07759	= RECORDER'S DOCUMENT NUMBER
OR 257-619	= OFFICIAL RECORD 257 PAGE 619
D.B. 613-172	= DEED BOOK 613, PAGE 172
REC. 15-72	= RECORDER'S PLAT BOOK 15, PAGE 72
LND. 33-15	= LAND SURVEY VOLUME 33, PAGE 15
LOT 19-12	= LOT SURVEY VOLUME 19, PAGE 12
R.R. 8-29	= ROAD RECORD VOLUME 8, PAGE 29
R/W	= RIGHT OF WAY
C	= CENTERLINE
AC	= ACRES
TWP.	= TOWNSHIP
TR.	= TRACT
②	= LOT CREATED BY RECORDER'S PLAT

LINE LEGEND

	Blow-up Boundary
	Property Line
	Lot Split Line
	Section Line
	Centerline
	Right-of-Way Line
	Corporation Line

SURVEY INDEX

LND. 1-123	LND. 54-25	REC. 10-74
LND. 1-212		
LND. 2-106		
LND. 6-25		
LND. 9-50		R.S. 39
LND. 11-3		
LND. 11-36		
LND. 15-136		
LND. 16-9		
LND. 21-5		
LND. 21-83		
LND. 23-25		
LND. 23-57		
LND. 32-59		
LND. 44-115		
LND. 45-135		
LND. 46-48		
LND. 47-34		
LND. 50-192		

PREPARED BY: MIAMI COUNTY ENGINEER'S MAP DEPARTMENT
PAUL P. HUELSKAMP, P.E., P.S., COUNTY ENGINEER
DATE: DECEMBER 23, 2015 MB
REVISED: SEPTEMBER 10, 2018 IG

