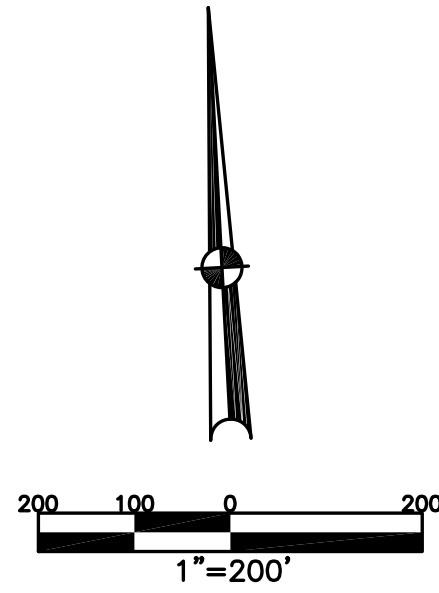


BETHEL TWP.  
MIAMI COUNTY, OHIO

SECTION 25 TOWN 2 RANGE 9  
NORTHWEST QUARTER

PARCEL NUMBER  
A01-  
PLAT 29-A



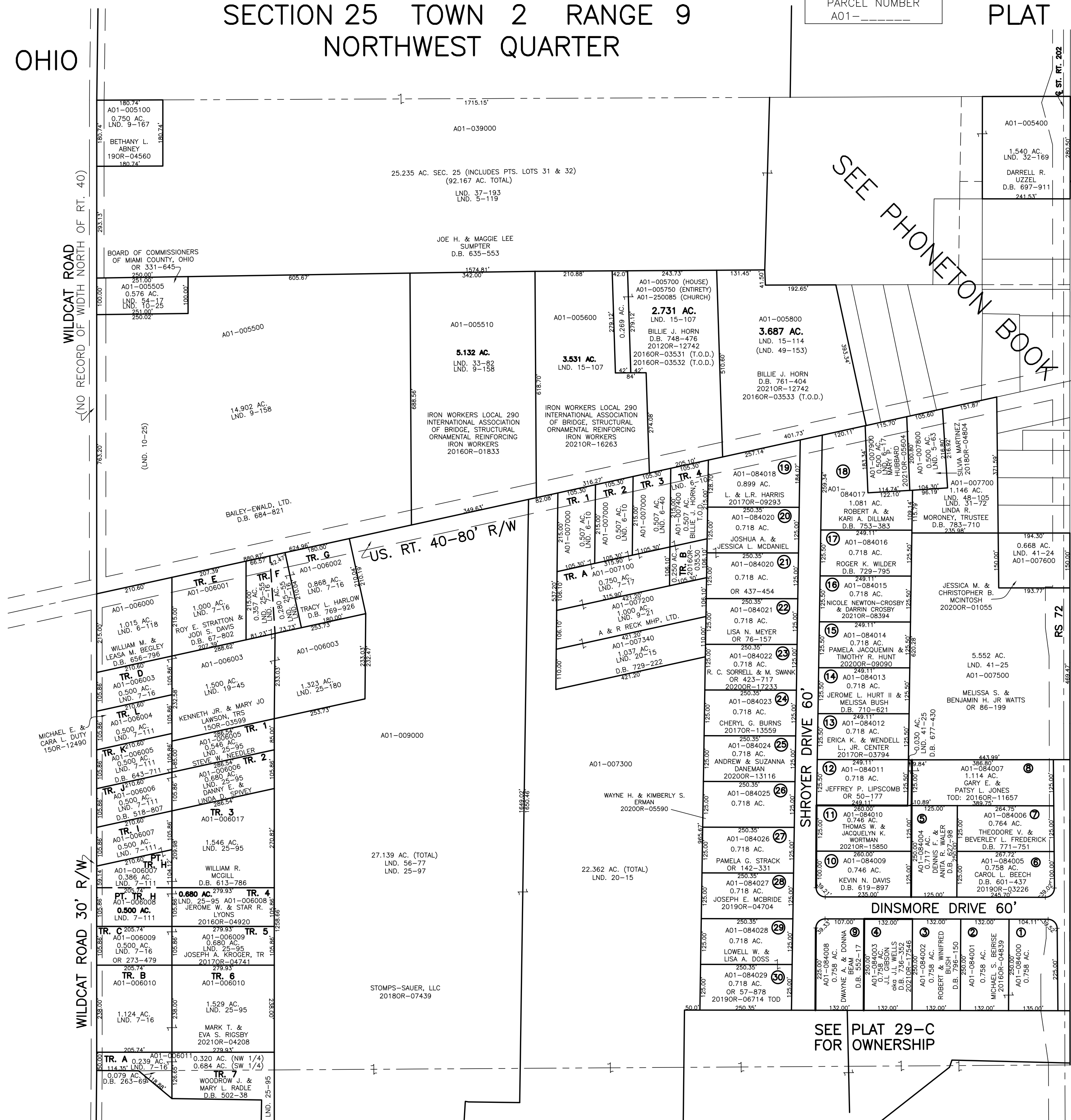
ABBREVIATION LEGEND		
20140R-07759	=	RECORDER'S DOCUMENT NUMBER
OR 257-619	=	OFFICIAL RECORD 257 PAGE 619
D.B. 613-172	=	DEED BOOK 613, PAGE 172
REC. 15-72	=	RECORDER'S PLAT BOOK 15, PAGE 72
LND. 33-15	=	LAND SURVEY VOLUME 33, PAGE 15
LOT 19-12	=	LOT SURVEY VOLUME 19, PAGE 12
R.R. 8-29	=	ROAD RECORD VOLUME 8, PAGE 29
R/W	=	RIGHT OF WAY
C	=	CENTERLINE
AC.	=	ACRES
TWP.	=	TOWNSHIP
TR.	=	TRACT
⊙	=	LOT CREATED BY RECORDER'S PLAT

LINE LEGEND		
	=	Blow-up Boundary
	=	Property Line
	=	Lot Split Line
	=	Section Line
	=	Centerline
	=	Right-of-Way Line
	=	Corporation Line

SURVEY INDEX		
LND. 4-249	LND. 19-48	REC. 6-107
LND. 4-405	LND. 20-15	REC. 7-129
LND. 5-63	LND. 25-55	REC. 8-48
LND. 5-119	LND. 25-97	
LND. 6-10	LND. 25-180	RS 72
LND. 6-17	LND. 30-63	
LND. 6-118	LND. 31-72	
LND. 7-16	LND. 32-169	
LND. 7-17	LND. 33-82	
LND. 7-82	LND. 37-193	
LND. 7-111	LND. 38-12	
LND. 9-21	LND. 41-24	
LND. 9-158	LND. 41-25	
LND. 9-167	LND. 48-105	
LND. 10-25	LND. 49-153	
LND. 15-107	LND. 54-17	
LND. 15-114	LND. 56-77	
LND. 19-45		



PREPARED BY: MIAMI COUNTY ENGINEER'S MAP DEPARTMENT  
PAUL P. HUELSKAMP, P.E., P.S., COUNTY ENGINEER  
DATE: AUGUST 24, 2015 MB  
REVISED: October 8, 2021 NINAMDAR

STATE ROUTE 202 R/W VARIES  
GREENDALE SUBDIVISION SEC. 1  
GREENDALE SUBDIVISION SEC. 2  
GREENDALE SUBDIVISION SEC. 3  
REC. 6-107  
REC. 7-129  
REC. 8-48  
REC. 9-111  
LOTS 1-8  
LOTS 9-11  
LOTS 12-30