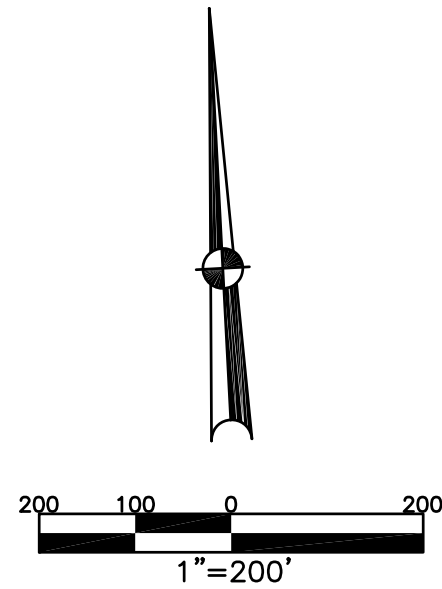


BETHEL TWP.
MIAMI COUNTY, OHIO

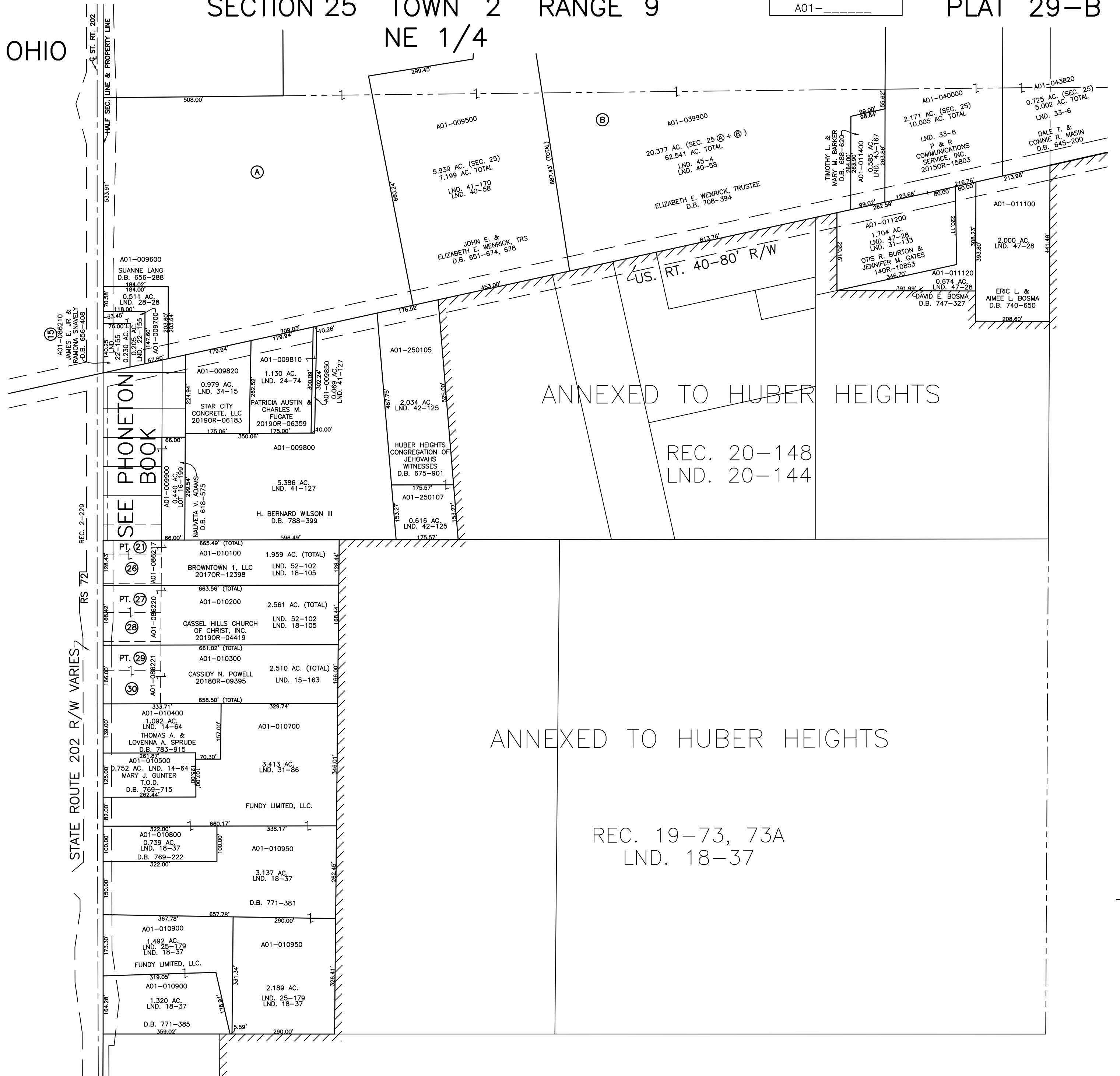
SECTION 25 TOWN 2 RANGE 9
NE 1/4

PARCEL NUMBER
A01-_____

PLAT 29-B



ABBREVIATION LEGEND		
20140R-07759	=	RECORDER'S DOCUMENT NUMBER
OR 257-619	=	OFFICIAL RECORD 257 PAGE 619
D.B. 613-172	=	DEED BOOK 613, PAGE 172
REC. 15-72	=	RECORDER'S PLAT BOOK 15, PAGE 72
LND. 33-15	=	LAND SURVEY VOLUME 33, PAGE 15
LOT 19-12	=	LOT SURVEY VOLUME 19, PAGE 12
R.R. 8-29	=	ROAD RECORD VOLUME 8, PAGE 29
R/W	=	RIGHT OF WAY
CL	=	CENTERLINE
AC.	=	ACRES
TWP.	=	TOWNSHIP
TR.	=	TRACT
Ⓢ	=	LOT CREATED BY RECORDER'S PLAT
LINE LEGEND		
	=	Blow-up Boundary
	=	Property Line
	=	Lot Split Line
	=	Section Line
	=	Centerline
	=	Right-of-Way Line
	=	Corporation Line
SURVEY INDEX		
LND. 14-64	LND. 40-58	LOT 16-199
LND. 15-163	LND. 41-127	REC. 2-229
LND. 18-37	LND. 41-170	REC. 19-73
LND. 18-105	LND. 42-125	REC. 19-73A
LND. 20-144	LND. 43-167	REC. 20-148
LND. 22-155	LND. 45-4	
LND. 24-74	LND. 47-28	RS 72
LND. 25-179	LND. 47-28	
LND. 28-28	LND. 52-102	
LND. 31-86		
LND. 31-133		
LND. 33-6		
LND. 34-15		



PREPARED BY: MIAMI COUNTY ENGINEER'S MAP DEPARTMENT
PAUL P. HUELSKAMP, P.E., P.S., COUNTY ENGINEER
DATE: AUGUST 25, 2015 MB

REVISED: June 14, 2019 IGRIFIN