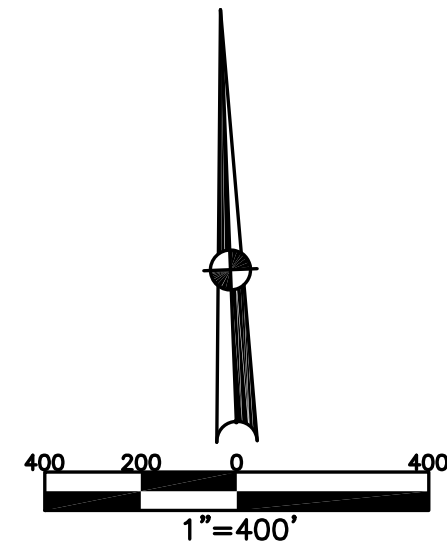


BETHEL TWP.
MIAMI COUNTY, OHIO

SECTION 27 TOWN 2 RANGE 9

PARCEL NUMBER
AO 1 -

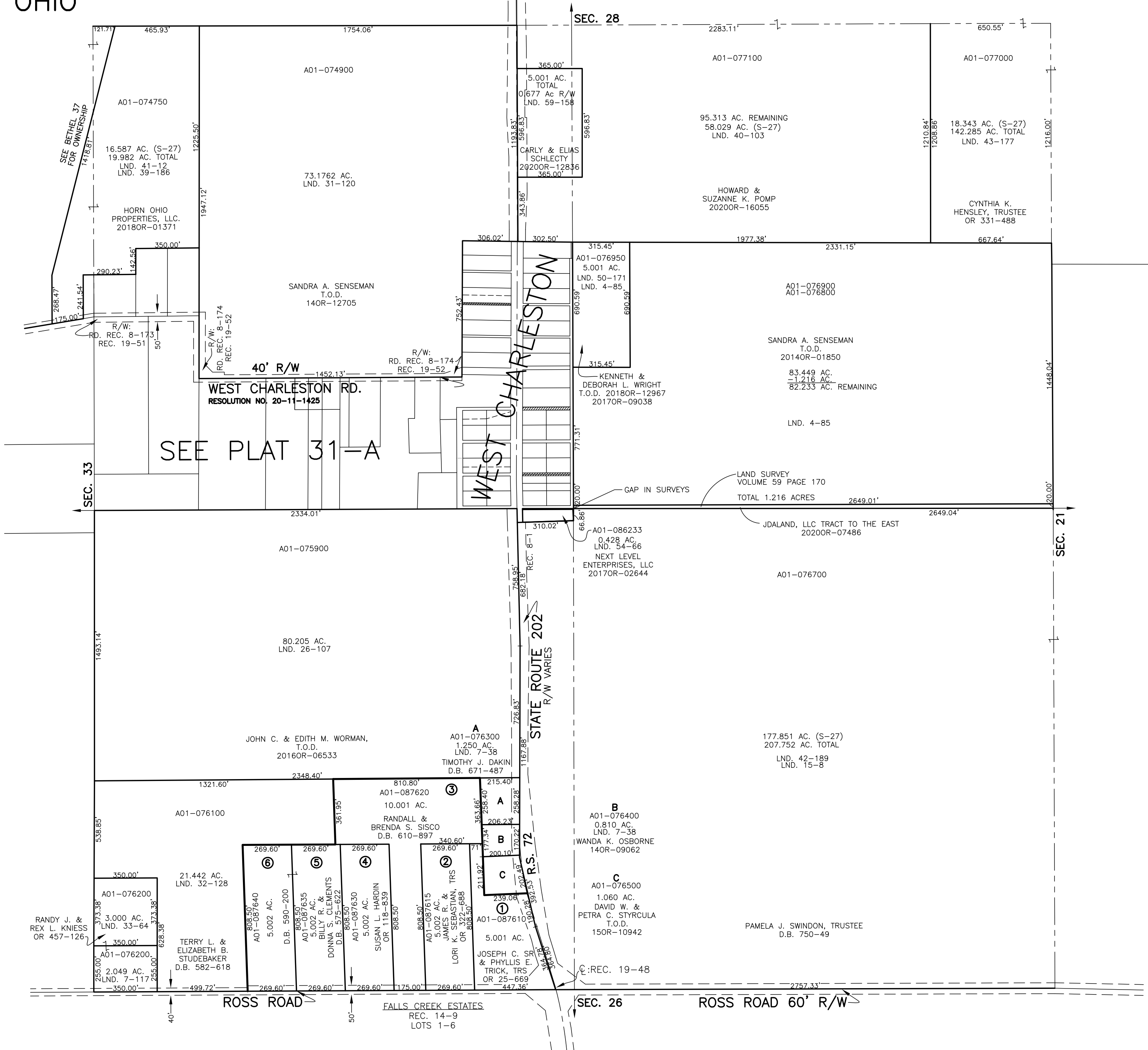
PLAT 31



ABBREVIATION LEGEND	
2014OR-07759	= RECORDER'S DOCUMENT NUMBER
OR 257-619	= OFFICIAL RECORD 257 PAGE 619
D.B. 613-172	= DEED BOOK 613, PAGE 172
REC. 15-72	= RECORDER'S PLAT BOOK 15, PAGE 72
LND. 33-15	= LAND SURVEY VOLUME 33, PAGE 15
LND. 19-12	= LOT SURVEY VOLUME 19, PAGE 12
R.R. 8-29	= ROAD RECORD VOLUME 8, PAGE 29
R/W	= RIGHT OF WAY
CL	= CENTERLINE
AC.	= ACRES
TWP.	= TOWNSHIP
TR.	= TRACT
②	= LOT CREATED BY RECORDER'S PLAT

LINE LEGEND	
	Blow-up Boundary
	Property Line
	Lot Split Line
	Section Line
	Centerline
	Right-of-Way Line
	Corporation Line

SURVEY INDEX	
NORTHEAST QUARTER	
LND. 4-85	
LND. 40-103	
LND. 43-177	
LND. 50-171	
SOUTHEAST QUARTER	
LND. 7-38	REC. 8-1
LND. 7-117	REC. 14-9
LND. 26-107	REC. 19-48
LND. 32-128	
LND. 33-64	
LND. 42-189	
LND. 54-66	
SOUTHWEST QUARTER	
LND. 15-8	
LND. 42-189	
NORTHWEST QUARTER	
LND. 31-120	REC. 19-51
LND. 39-186	REC. 19-52
LND. 41-12	RD. REC. 8-173
	RD. REC. 8-174



PREPARED BY: MIAMI COUNTY ENGINEER'S MAP DEPARTMENT
PAUL P. HUELSKAMP, P.E., P.S., COUNTY ENGINEER
DATE: APRIL 11, 2016 MB
REVISED: December 16, 2020 APALMER