

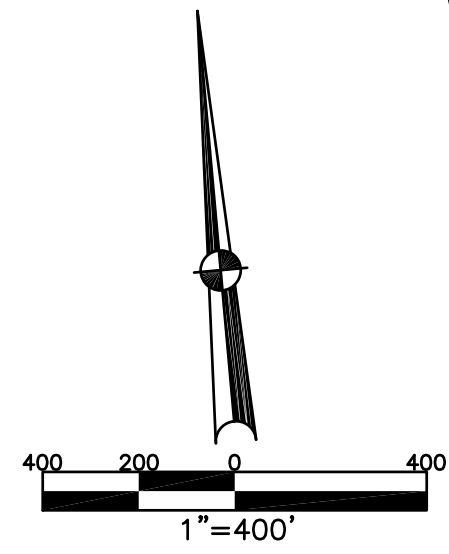
BETHEL TWP.
MIAMI COUNTY, OHIO

SECTION 29 TOWN 2 RANGE 9

A01-034800
1.121 AC.
LND. 45-25
JEFFREY L. &
PENNY M. METTLER
D.B. 703-637

PARCEL NUMBER
AO1 -

PLAT 33



ABBREVIATION LEGEND

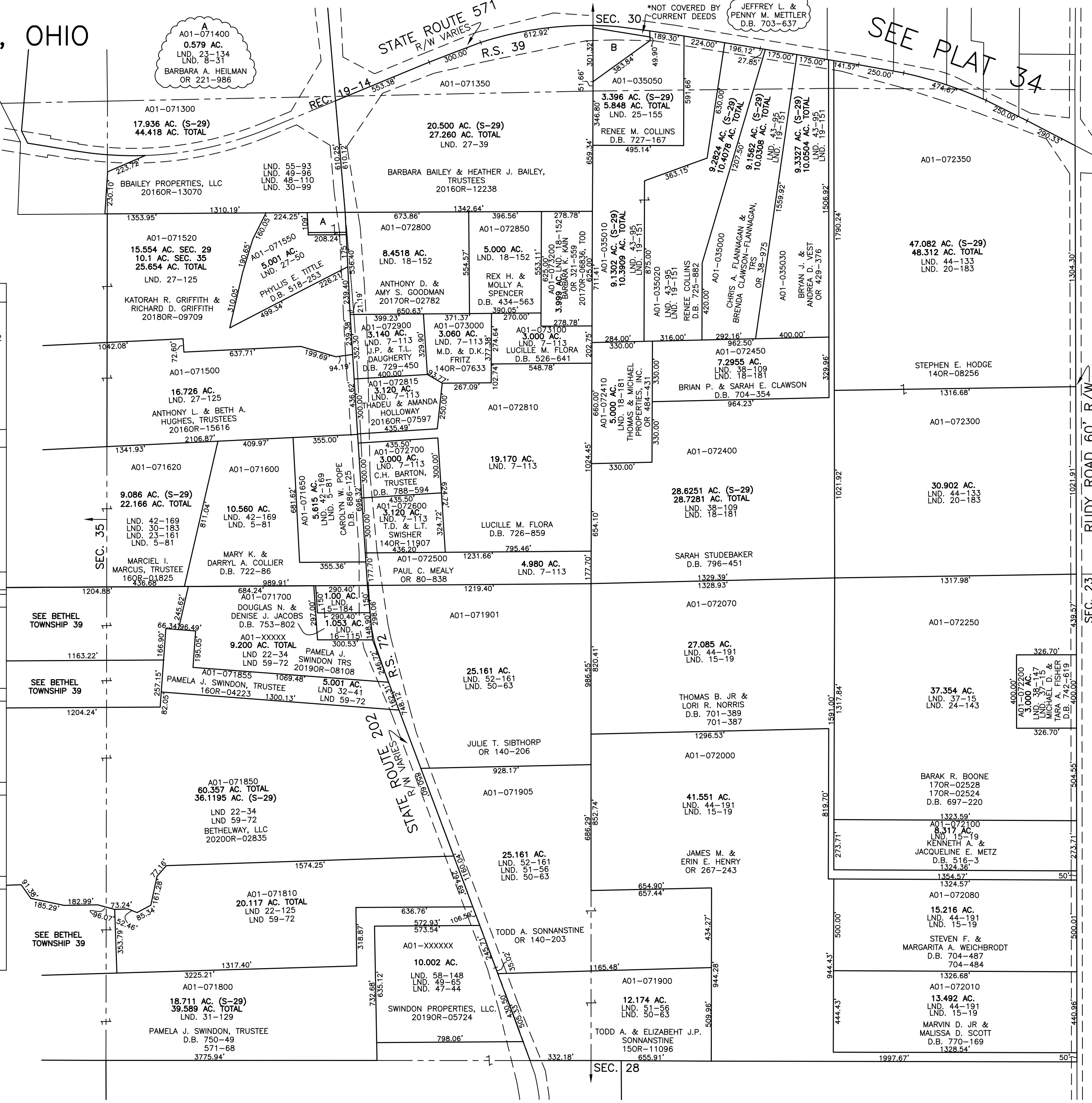
2014OR-07759 = RECORDER'S DOCUMENT NUMBER
OR 257-619 = OFFICIAL RECORD 257 PAGE 619
D.B. 613-172 = DEED BOOK 613, PAGE 172
REC. 15-72 = RECORDER'S PLAT BOOK 15, PAGE 72
LND. 33-15 = LAND SURVEY VOLUME 33, PAGE 15
LOT 19-12 = LOT SURVEY VOLUME 19, PAGE 12
R.R. 8-29 = ROAD RECORD VOLUME 8, PAGE 29
R/W = RIGHT OF WAY
C = CENTERLINE
AC. = ACRES
TWP. = TOWNSHIP
TR. = TRACT
② = LOT CREATED BY RECORDER'S PLAT

LINE LEGEND

— Blow-up Boundary
— Property Line
- - - Lot Split Line
- - - Section Line
- - - Centerline
- - - Right-of-Way Line
// // // Corporation Line

SURVEY INDEX

NORTHEAST QUARTER		
LND. 18-181	LND. 44-133	REC. 13-42
LND. 19-151	LND. 55-132	REC. 19-14
LND. 20-183		R.S. 39
LND. 25-155		
LND. 38-109		
LND. 39-156		
LND. 42-55		
LND. 43-95		
SOUTHEAST QUARTER		
LND. 15-19		
LND. 24-143		
LND. 37-15		
LND. 38-147		
LND. 44-191		
LND. 50-63		
LND. 51-56		
LND. 52-161		
SOUTHWEST QUARTER		
LND. 5-184	LND. 50-63	R.S. 72
LND. 16-115	LND. 51-56	
LND. 22-34	LND. 52-161	
LND. 22-125	LND. 58-148	
LND. 22-129		
LND. 32-41		
LND. 47-44		
LND. 49-65		
NORTHWEST QUARTER		
LND. 5-81	LND. 27-125	LND. 53-92
LND. 7-113	LND. 30-99	LND. 55-93
LND. 8-31	LND. 30-100	LND. 59-72
LND. 18-152	LND. 30-102	
LND. 23-134	LND. 30-183	
LND. 23-161	LND. 42-169	REC. 19-14
LND. 27-39	LND. 48-110	R.S. 39
LND. 27-50	LND. 49-96	R.S. 72



PREPARED BY: MIAMI COUNTY ENGINEER'S MAP DEPARTMENT
PAUL P. HUELSKAMP, P.E., P.S., COUNTY ENGINEER
DATE: APRIL 28, 2016 MB
REVISED: August 8, 2019 IGRIFIN