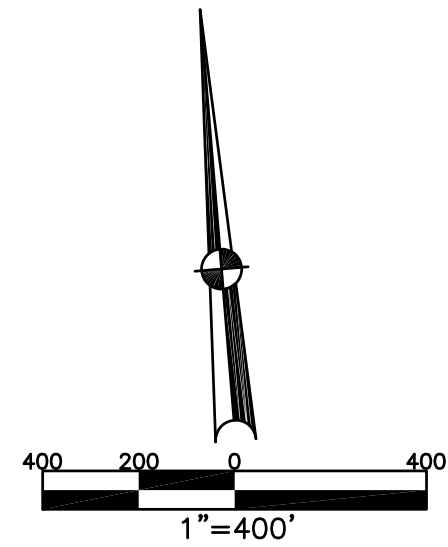


BETHEL TWP.
MIAMI COUNTY, OHIO

FRACTIONAL
SECTION 31 TOWN 2 RANGE 9

PARCEL NUMBER
AO1 -

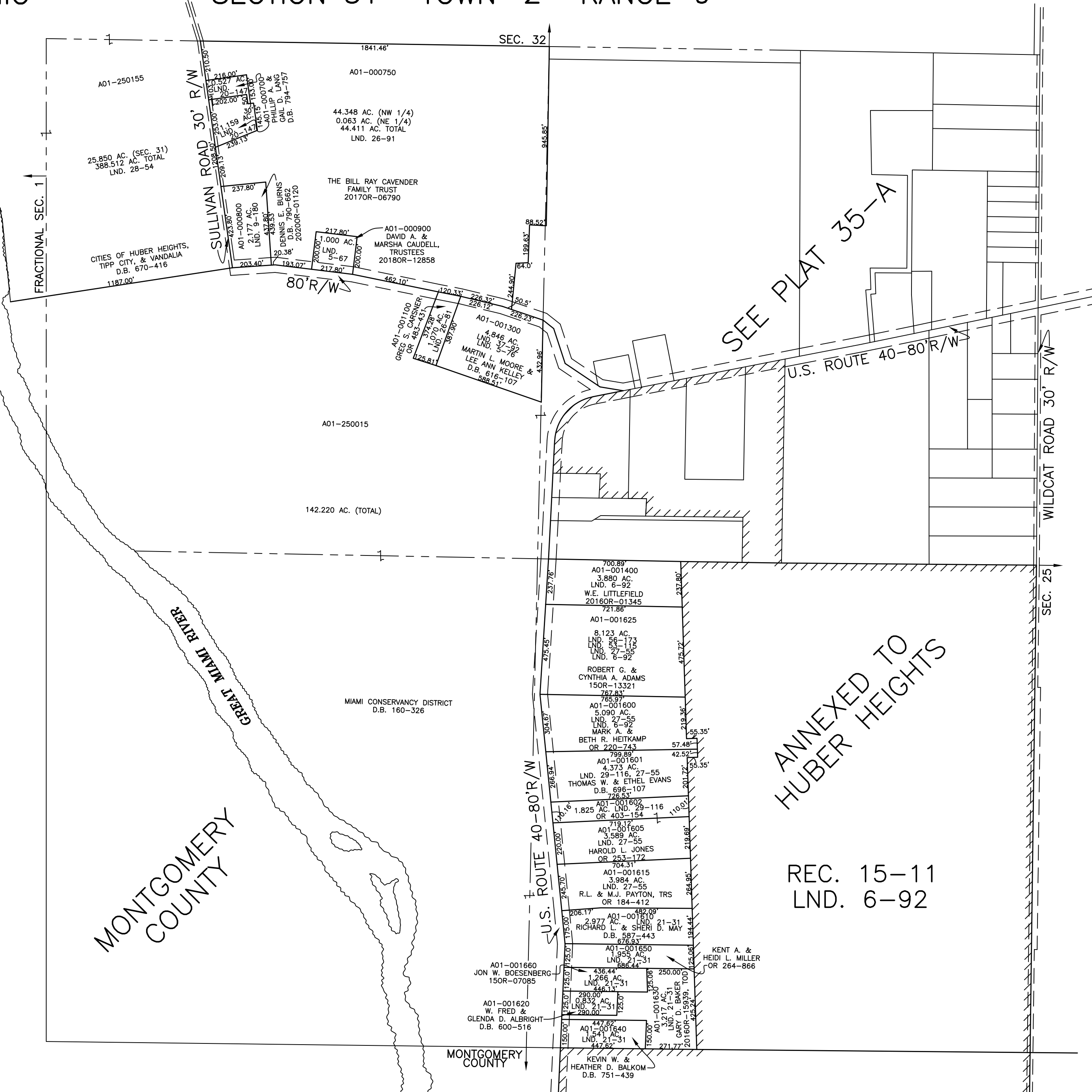
PLAT 35



ABBREVIATION LEGEND	
2014OR-07759	= RECORDER'S DOCUMENT NUMBER
OR 257-619	= OFFICIAL RECORD 257 PAGE 619
D.B. 613-172	= DEED BOOK 613, PAGE 172
REC. 15-72	= RECORDER'S PLAT BOOK 15, PAGE 72
LND. 33-15	= LAND SURVEY VOLUME 33, PAGE 15
LOT 19-12	= LOT SURVEY VOLUME 19, PAGE 12
R.R. 8-29	= ROAD RECORD VOLUME 8, PAGE 29
R/W	= RIGHT OF WAY
CL	= CENTERLINE
AC.	= ACRES
TWP.	= TOWNSHIP
TR.	= TRACT
⊙	= LOT CREATED BY RECORDER'S PLAT

LINE LEGEND	
	Blow-up Boundary
	Property Line
	Lot Split Line
	Section Line
	Centerline
	Right-of-Way Line
	Corporation Line

SURVEY INDEX	
NORTHEAST QUARTER	
SOUTHWEST QUARTER	
LND. 6-92 LND. 21-31 LND. 27-55 LND. 28-116 LND. 53-115 LND. 56-173	REC. 15-11
SOUTHWEST QUARTER	
NORTHWEST QUARTER	
LND. 5-67 LND. 5-76 LND. 5-180 LND. 20-147 LND. 28-81 LND. 28-91 LND. 28-94 LND. 37-92 LND. 45-55	



PREPARED BY: MIAMI COUNTY ENGINEER'S MAP DEPARTMENT
PAUL F. HUELSKAMP, P.E., P.S., COUNTY ENGINEER
DATE: DECEMBER 9, 2015 MB
REVISED: January 27, 2020 DSTUMPF

ANNEXED TO
HUBER HEIGHTS
REC. 15-11
LND. 6-92