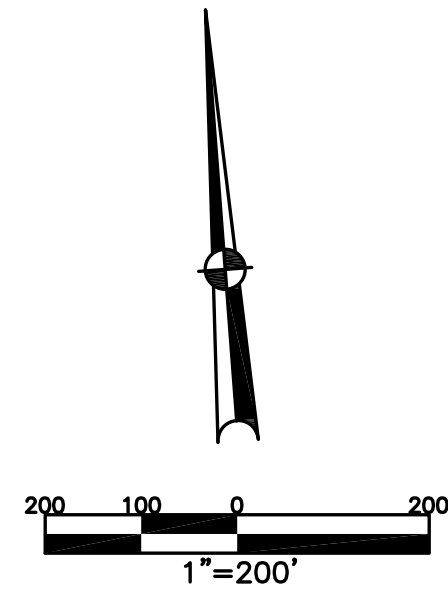


BETHEL TWP.
MIAMI COUNTY, OHIO

SECTION 1 TOWN 2 RANGE 9
NE 1/4

PARCEL NUMBER
A01-
A03-

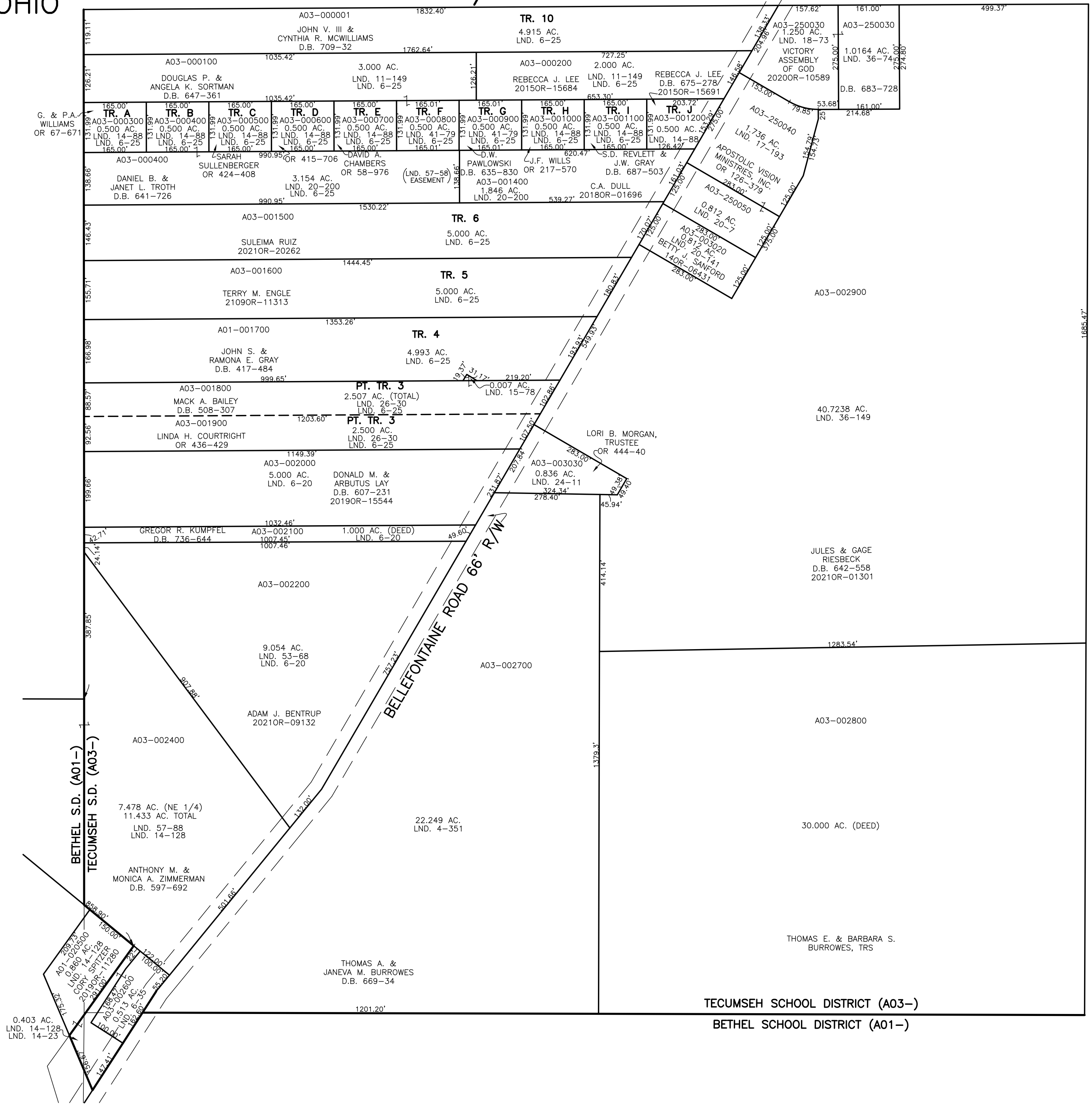
PLAT 2-A



ABBREVIATION LEGEND	
20140R-07759	= RECORDER'S DOCUMENT NUMBER
OR 257-619	= OFFICIAL RECORD 257 PAGE 619
D.B. 613-172	= DEED BOOK 613, PAGE 172
REC. 15-72	= RECORDER'S PLAT BOOK 15, PAGE 72
LND. 33-15	= LAND SURVEY VOLUME 33, PAGE 15
LOT 19-12	= LOT SURVEY VOLUME 19, PAGE 12
R.R. 8-29	= ROAD RECORD VOLUME 8, PAGE 29
R/W	= RIGHT OF WAY
CL	= CENTERLINE
AC.	= ACRES
TWP.	= TOWNSHIP
TR.	= TRACT
②	= LOT CREATED BY RECORDER'S PLAT

LINE LEGEND	
	Blow-up Boundary
	Property Line
	Lot Split Line
	Section Line
	Centerline
	Right-of-Way Line
	Corporation Line

SURVEY INDEX		
LND. 4-351	LND. 20-7	
LND. 6-20	LND. 20-141	
LND. 6-25	LND. 20-200	
LND. 6-35	LND. 24-11	
LND. 11-149	LND. 26-30	
LND. 14-23	LND. 36-74	
LND. 14-88	LND. 36-149	
LND. 14-128	LND. 41-79	
LND. 15-78	LND. 53-68	
LND. 17-193	LND. 57-58	
LND. 18-73	LND. 57-88	



PREPARED BY: MIAMI COUNTY ENGINEER'S MAP DEPARTMENT
PAUL P. HUELSKAMP, P.E., P.S., COUNTY ENGINEER
DATE: SEPTEMBER 22, 2015 MB
REVISED: November 23, 2021 JVINCENT