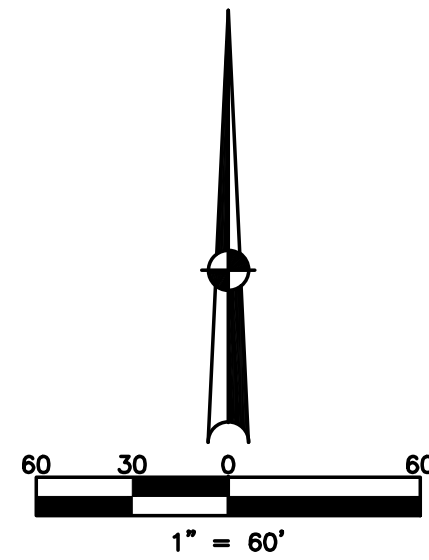


SECTION 22
TOWN 9
RANGE 4

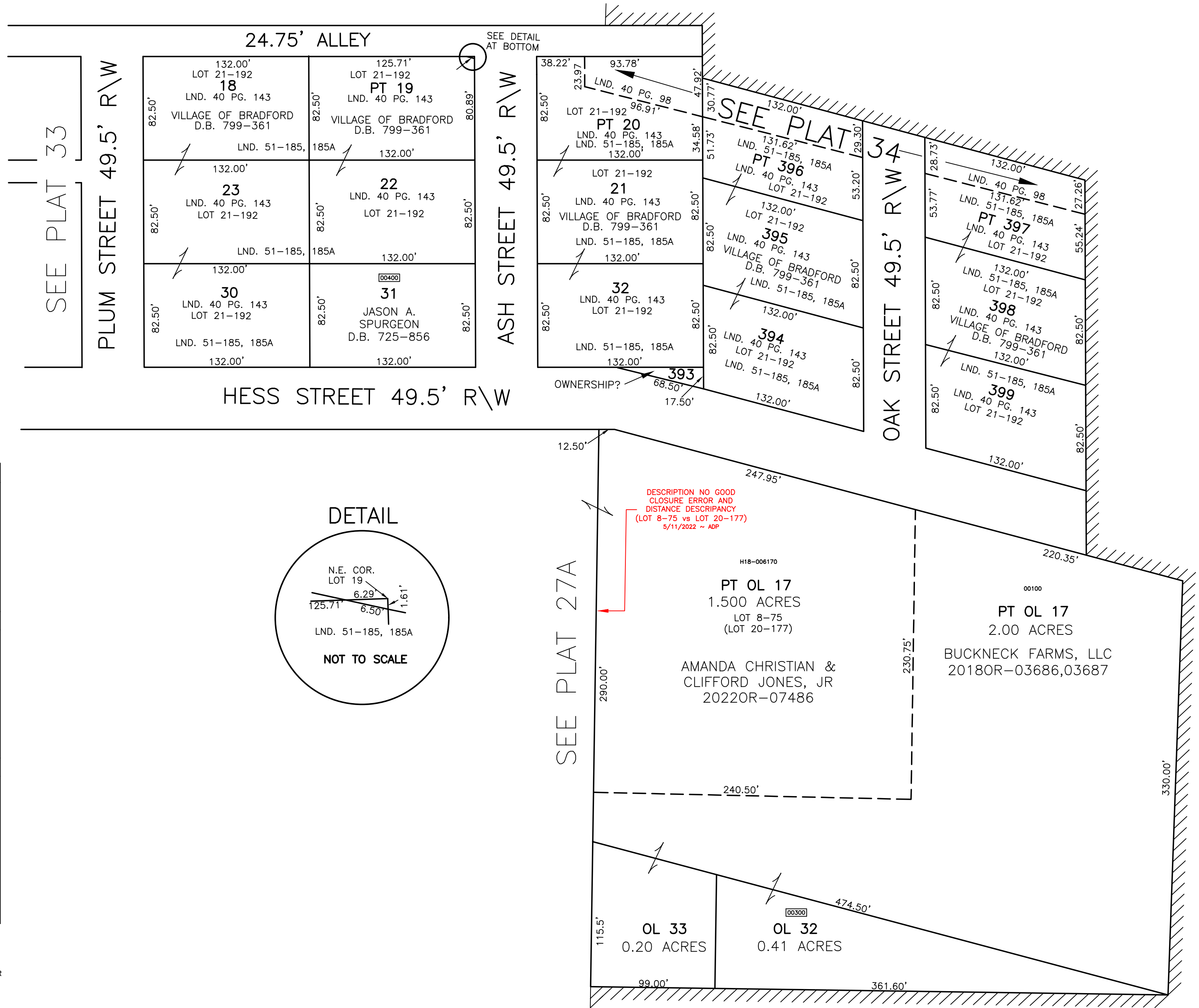
VILLAGE OF BRADFORD
MIAMI COUNTY, OHIO

SMDA NUMBER
H18-BF032_--

PLAT 32



ABBREVIATION LEGEND		
OR 120-119	=	OFFICIAL RECORD 120, PAGE 119
D.B. 613-172	=	DEED BOOK 613, PAGE 172
REC. 15-72	=	RECORDER'S PLAT BOOK 15, PAGE 72
LND. 33-15	=	LAND SURVEY VOLUME 33, PAGE 15
LOT 19-12	=	LOT SURVEY VOLUME 19, PAGE 12
R.R. 8-29	=	ROAD RECORD VOLUME 8, PAGE 29
R/W	=	RIGHT OF WAY
CL	=	CENTERLINE
AC.	=	ACRES
TWP.	=	TOWNSHIP
TR.	=	TRACT
Ⓢ	=	LOT CREATED BY RECORDER'S PLAT
LINE LEGEND		
	=	Blow-up Boundary
	=	Property Line
	=	Lot Split Line
	=	Section Line
	=	Centerline
	=	Right-of-Way Line
	=	Corporation Line
SURVEY INDEX		
LOT 8-75 (LOT 20-177) LOT 21-192	REC. 1-177 REC. 1-374 REC. 2-178	LND. 40-98 LND. 40-143 LND. 51-185,185A



PREPARED BY: MIAMI COUNTY ENGINEER'S MAP DEPARTMENT
PAUL P. HUELSKAMP, PE, PS, COUNTY ENGINEER
DATE: SEPTEMBER 24, 1994
REVISED: September 11, 2023 APALMER