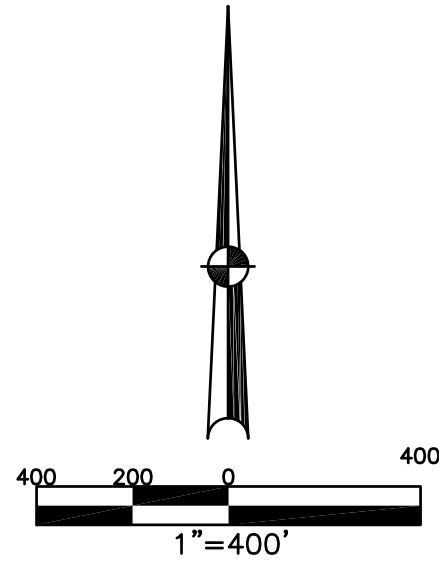


CONCORD TWP.
MIAMI COUNTY, OHIO

SECTION 13 TOWN 7 RANGE 5

PARCEL NUMBER
C06-_____

PLAT 15



ABBREVIATION LEGEND

2014OR-07759 = RECORDER'S DOCUMENT NUMBER
OR 257-619 = OFFICIAL RECORD 257 PAGE 619
D.B. 613-172 = DEED BOOK 613, PAGE 172
REC. 15-72 = RECORDER'S PLAT BOOK 15, PAGE 72
LND. 33-15 = LAND SURVEY VOLUME 33, PAGE 15
LOT 19-12 = LOT SURVEY VOLUME 19, PAGE 12
R.R. 8-29 = ROAD RECORD VOLUME 8, PAGE 29
R/W = RIGHT OF WAY
C = CENTERLINE
AC. = ACRES
TWP. = TOWNSHIP
TR. = TRACT
⊙ = LOT CREATED BY RECORDER'S PLAT

LINE LEGEND

— Blow-up Boundary
— Property Line
- - - Lot Split Line
- - - Section Line
- - - Centerline
- - - Right-of-Way Line
// // // Corporation Line

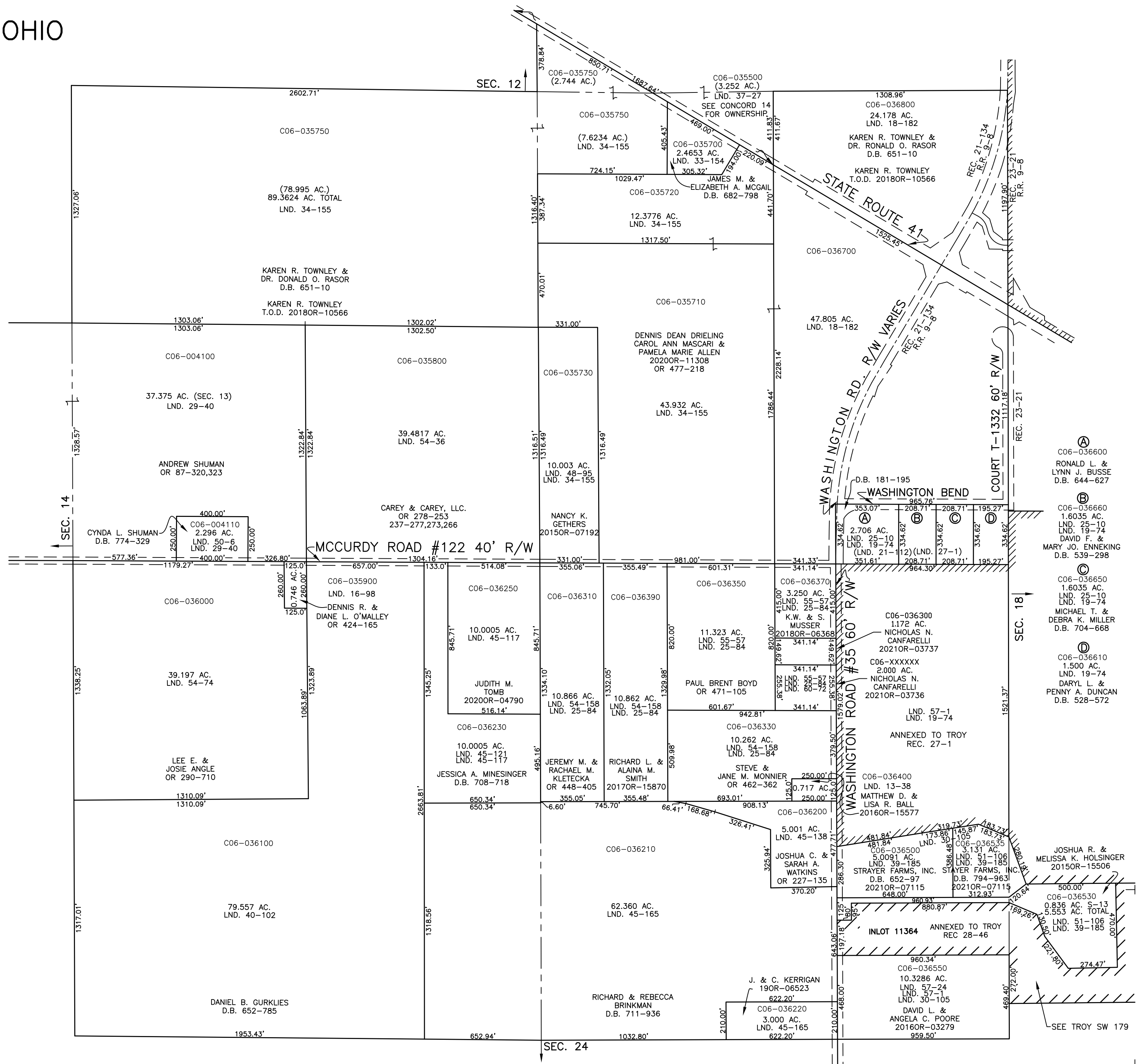
SURVEY INDEX

NORTHEAST QUARTER	
LND. 2-56	REC. 21-134
LND. 5-132	REC. 23-21
LND. 18-182	
LND. 19-74	R.R. 9-8
LND. 21-112	
LND. 27-1	
LND. 33-15	
LND. 34-155	
LND. 37-27	
LND. 46-95	

SOUTHEAST QUARTER	
LND. 2-56	LND. 60-72
LND. 5-101	REC. 27-1
LND. 13-38	REC. 28-46
LND. 19-74	
LND. 25-84	
LND. 30-105	
LND. 38-185	
LND. 45-138	
LND. 45-165	
LND. 51-106	
LND. 54-158	
LND. 55-57	
LND. 57-1	
LND. 57-24	

SOUTHWEST QUARTER	
LND. 1-187	
LND. 2-56	
LND. 3-7	
LND. 16-98	
LND. 40-102	
LND. 45-117	
LND. 45-121	
LND. 45-165	
LND. 54-74	

NORTHWEST QUARTER	
LND. 2-56	
LND. 5-132	
LND. 29-40	
LND. 34-155	
LND. 50-6	
LND. 54-56	



PREPARED BY: MIAMI COUNTY ENGINEER'S MAP DEPARTMENT
PAUL P. HUELSKAMP, P.E., P.S., COUNTY ENGINEER
DATE: MARCH 29, 2018 MDB
REVISED: April 26, 2021 CSHOUP

SEE TROY SW 179