

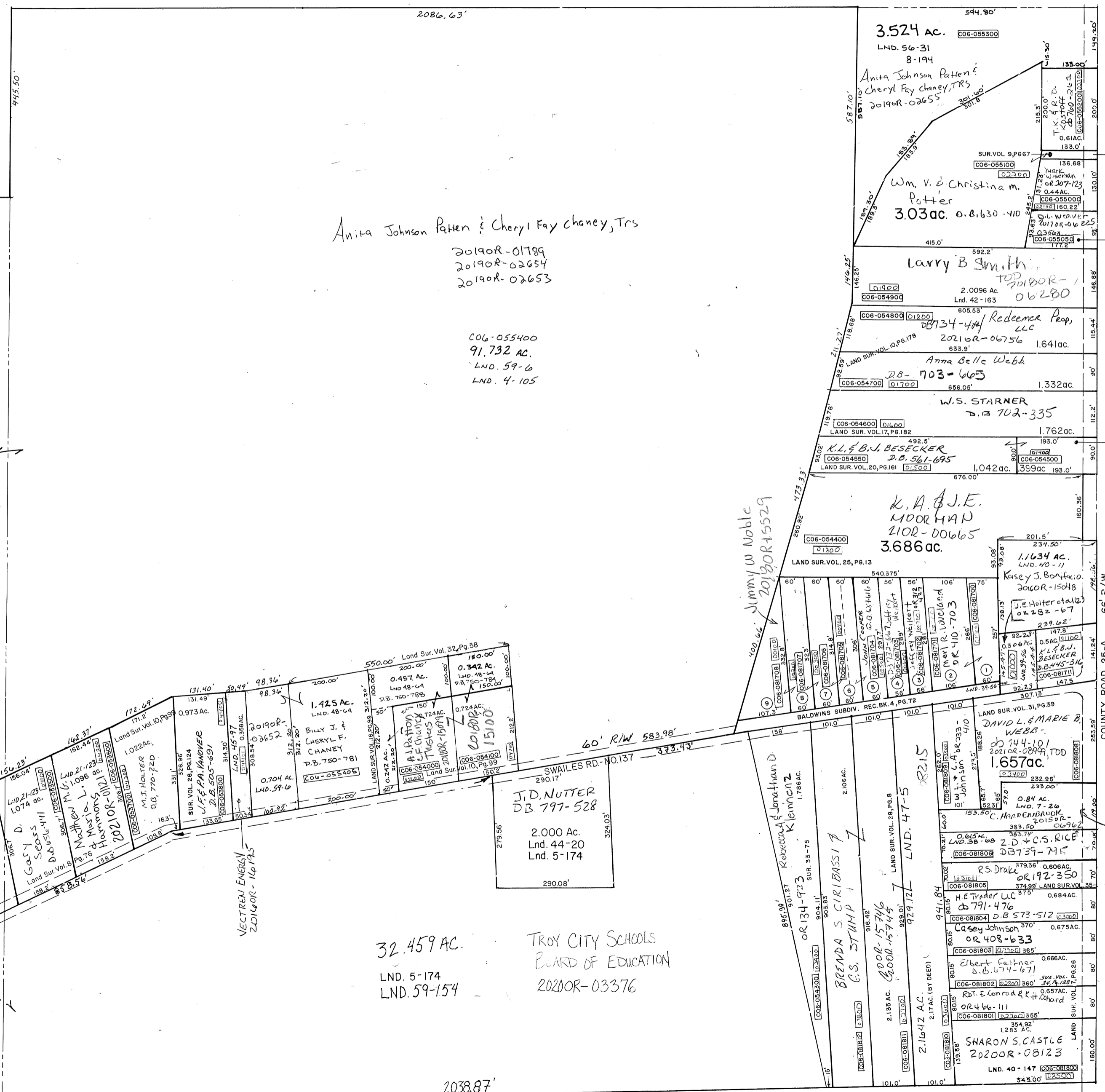
PARCEL NUMBER
C06-

SURVEYS, RECORD PLATS & NOTES

Land Survey Vol.	4,	Pg.	105
	5		74
	7		26
	8		76
	8		28
	8		94
	9		67
	9		99
	10		84
	10		94
	20		61
	25		13
	26		24
	28		00
	31		00
	32		12
	34		20
	21		123
	38	-	68
	39	-	56
	40	-	11
	40	-	147
	42	-	163
	44	-	20
	45	-	97
Record Book Vol.	4,	-	72
"	"	-	3
"	"	-	19
"	"	-	26
"	"	-	19
"	"	-	27

LAND SURVEYS:
47-5
48-64
LND. 59-4
LND. 59-154

REC. 20-94, R0 REC. 8-199



Anita Johnson Patten & Cheryl Fay Chaney, Trs
20190R-01789
20190R-02654
20190R-02653

C06-055400
91.732 AC.
LND. 59-6
LND. 4-105

J.D. NUTTER
DB 797-528
2.000 Ac.
Lnd. 44-20
Lnd. 5-174

32.459 AC.
LND. 5-174
LND. 59-154

TROY CITY SCHOOLS
BOARD OF EDUCATION
20200R-03376

Jimmy W Noble
20190R-15529

SEE CONCORD
33C

VECTREN ENERGY
20140R-116745

REBECCA A & JONATHAN D. KLEINZ
SUR. 35-75

BRENDA S. CIRIBASSI & C.S. STUMP
LND. 47-5

SHARON S. CASTLE
20200R-08123
LND. 40-147

REC. 19-25, 26, 27
REC. 20-94 RR 8-199

SUR. VOL. 15, PG. 194

LAND SUR. VOL. 8, PG. 128

Sec. 34

REC. BK. 3 PG. 97

TOD
20180R-06328

PG. 81

CLINTON LANE SUB. (SURREY ONLY-NO RECORD PLAT)
REC. 20-94 RR 8-199

CENTERLINE
SECTION LINE
HALF SECTION LINE
ROAD & HIGHWAY RIGHT OF WAY
PROPERTY LINE

2038.87'