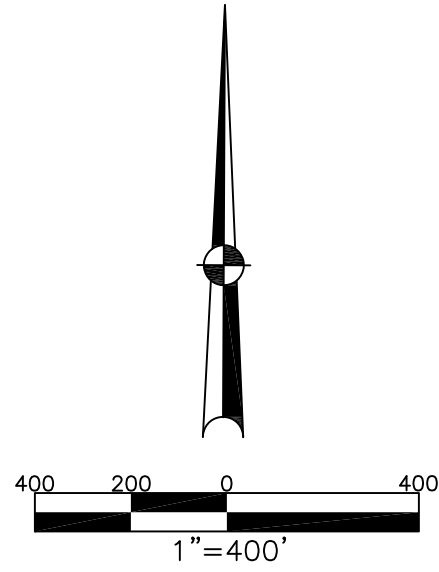


CONCORD TWP.
MIAMI COUNTY, OHIO

SECTION 2 TOWN 7 RANGE 5

PARCEL NUMBER
C06-_____

PLAT 3

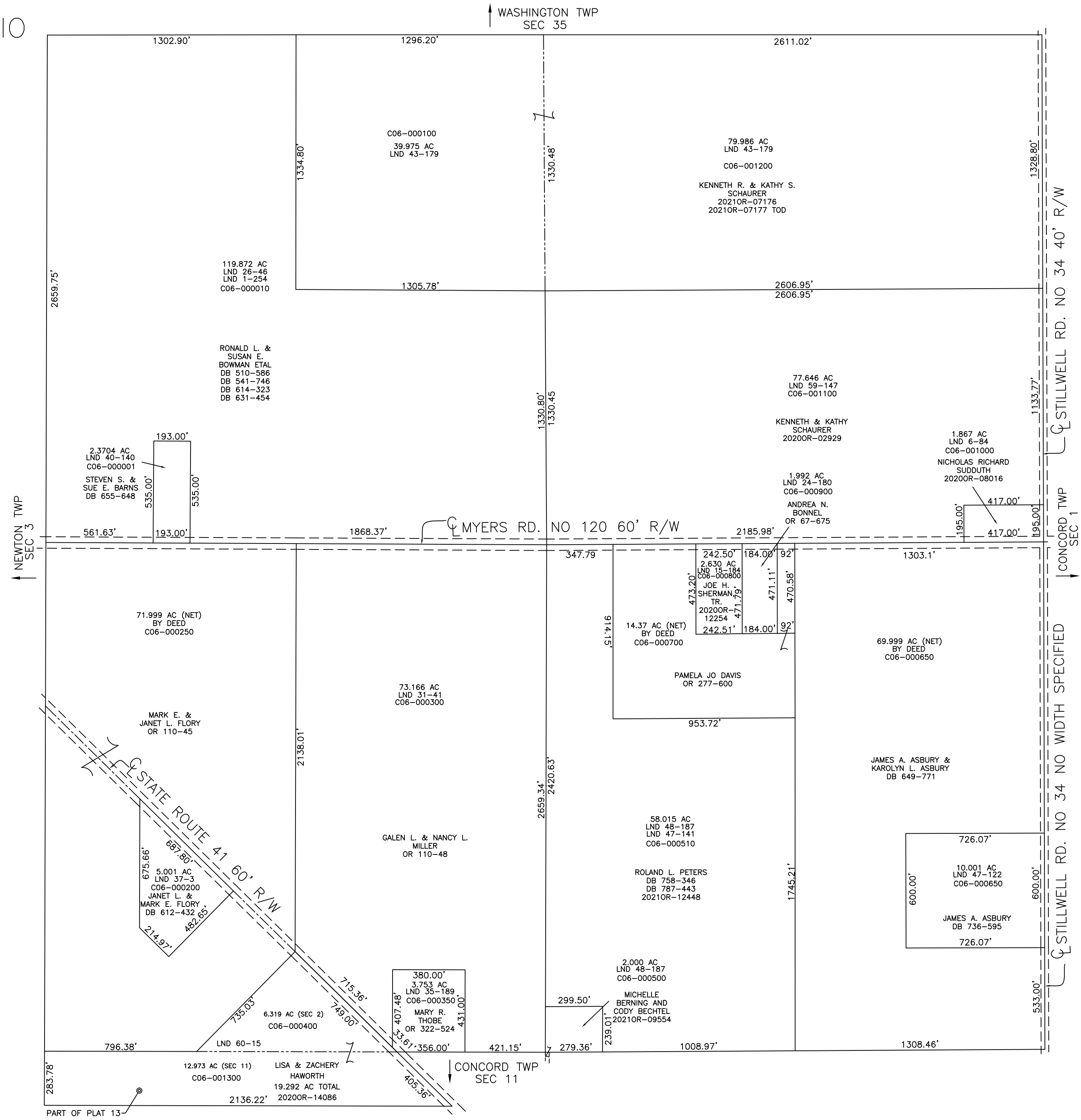


ABBREVIATION LEGEND	
20140R-07759	= RECORDER'S DOCUMENT NUMBER
OR 257-619	= OFFICIAL RECORD 257 PAGE 619
D.B. 613-172	= DEED BOOK 613, PAGE 172
REC. 15-72	= RECORDER'S PLAT BOOK 15, PAGE 72
LND. 33-15	= LAND SURVEY VOLUME 33, PAGE 15
LOT 19-12	= LOT SURVEY VOLUME 19, PAGE 12
R.R. 8-29	= ROAD RECORD VOLUME 8, PAGE 29
R/W	= RIGHT OF WAY
CL	= CENTERLINE
AC.	= ACRES
TWP.	= TOWNSHIP
TR.	= TRACT
②	= LOT CREATED BY RECORDER'S PLAT

LINE LEGEND	
	Blow-up Boundary
	Property Line
	Lot Split Line
	Section Line
	Centerline
	Right-of-Way Line
	Corporation Line

SURVEY INDEX	
NORTHEAST QUARTER	
LND 6-84	
LND 43-179	
LND 59-147	
NORTHWEST QUARTER	
LND 1-254	
LND 26-46	
LND 40-140	
LND 43-179	
SOUTHEAST QUARTER	
LND 15-184	MISC BOOK 15-244
LND 24-180	
LND 47-122	
LND 47-141	
LND 48-187	
SOUTHWEST QUARTER	
LND 1-254	
LND 31-41	
LND 35-189	
LND 37-3	
LND 60-15	

PREPARED BY: MIAMI COUNTY ENGINEER'S MAP DEPARTMENT
PAUL P. HUELSKAMP, P.E., P.S., COUNTY ENGINEER
DATE: DECEMBER 29, 2020 SS
REVISED: July 19, 2021 CSHOUP



PART OF PLAT 13