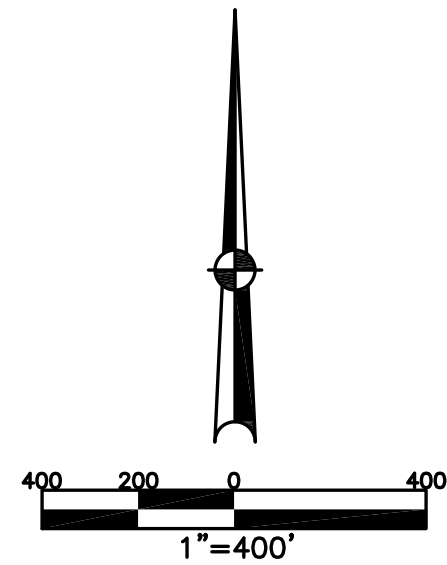


ELIZABETH TOWNSHIP  
MIAMI COUNTY, OHIO

SECTION 4 TOWN 2 RANGE 10

PARCEL NUMBER  
E09-\_\_\_\_\_

PLAT 4



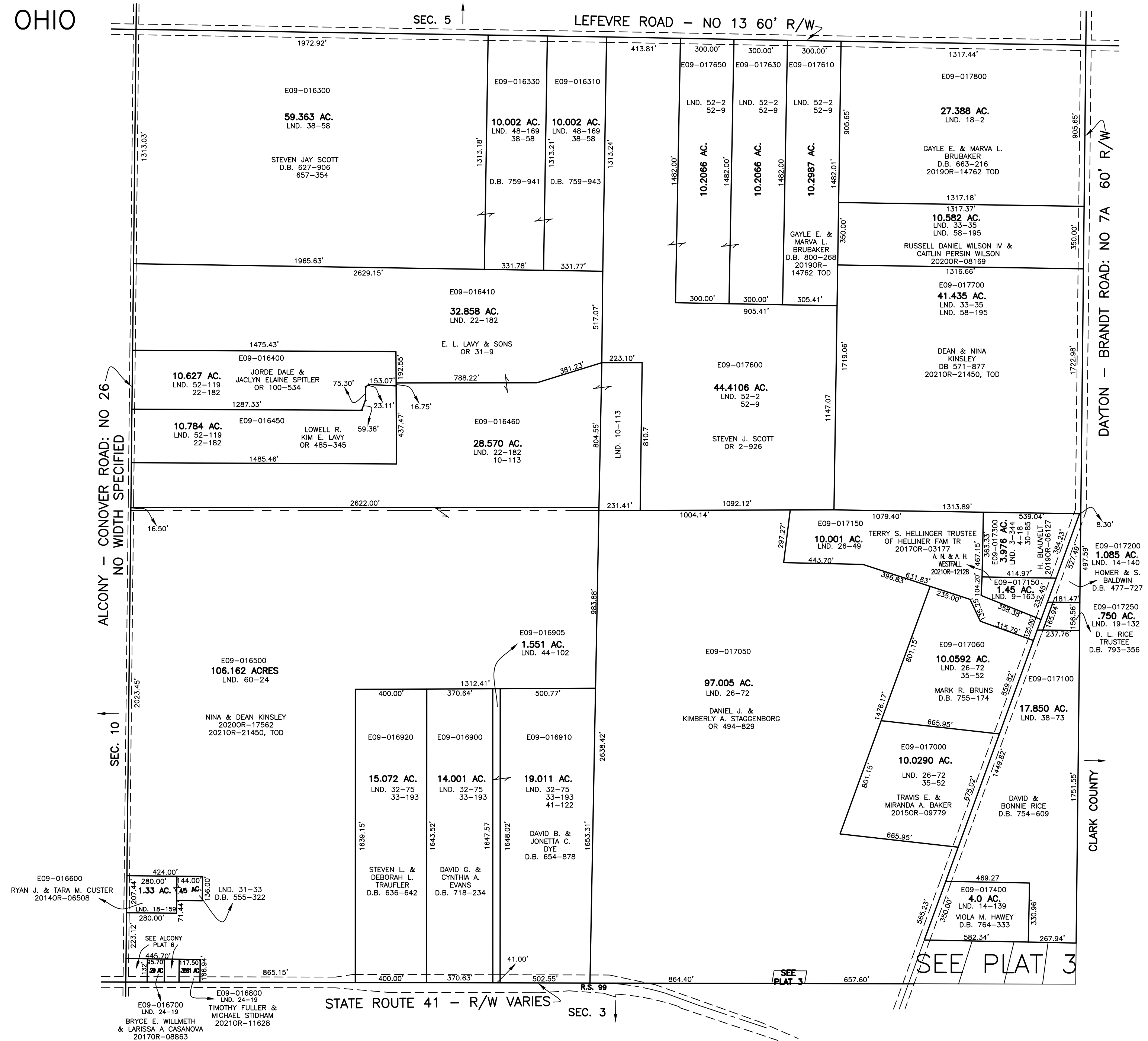
ABBREVIATION LEGEND	
2014OR-07759	= RECORDER'S DOCUMENT NUMBER
OR 257-619	= OFFICIAL RECORD 257 PAGE 619
D.B. 613-172	= DEED BOOK 613, PAGE 172
REC. 15-72	= RECORDER'S PLAT BOOK 15, PAGE 72
LND. 33-15	= LAND SURVEY VOLUME 33, PAGE 15
LOT 19-12	= LOT SURVEY VOLUME 19, PAGE 12
R.R. 8-29	= ROAD RECORD VOLUME 8, PAGE 29
R/W	= RIGHT OF WAY
CL	= CENTERLINE
AC.	= ACRES
TWP.	= TOWNSHIP
TR.	= TRACT
②	= LOT CREATED BY RECORDER'S PLAT

LINE LEGEND	
	Blow-up Boundary
	Property Line
	Lot Split Line
	Section Line
	Centerline
	Right-of-Way Line
	Corporation Line

SURVEY INDEX	
NORTHEAST QUARTER	
LND. 10-113	
LND. 18-2	
LND. 22-182	
LND. 33-35	
LND. 52-2	
LND. 52-9	
LND. 58-195	
SOUTHEAST QUARTER	
LND. 3-41	LND. 25-168
LND. 3-344	LND. 25-177
LND. 4-18	LND. 26-49
LND. 9-163	LND. 26-72
LND. 19-132	LND. 30-85
LND. 14-139	LND. 38-73
LND. 14-140	LND. 55-66
LND. 25-129	LND. 60-24
	R.S. 99
SOUTHWEST QUARTER	
LND. 18-159	
LND. 24-19	
LND. 32-75	
LND. 33-193	
LND. 41-122	
LND. 44-102	
LND. 31-33	
LND. 53-76	
	R.S. 99
NORTHWEST QUARTER	
LND. 22-182	
LND. 38-58	
LND. 48-169	
LND. 52-119	



PREPARED BY: MIAMI COUNTY ENGINEER'S MAP DEPARTMENT  
PAUL P. HUELSKAMP, P.E., P.S., COUNTY ENGINEER  
DATE: 5 APRIL 2019 KDIGIORMO  
REVISED: December 13, 2021 MSTORMS

SEE PLAT 3

SEE PLAT 3