

SECTION 28 & 33

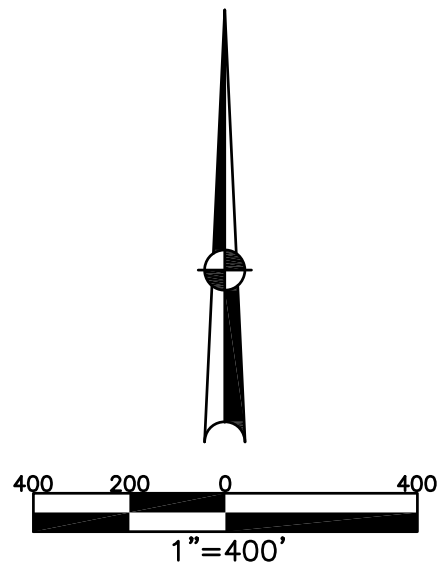
TOWN 6

RANGE 5

VILLAGE OF WEST MILTON MIAMI COUNTY, OHIO

PARCEL NUMBER
L39-_____

PLAT S 55

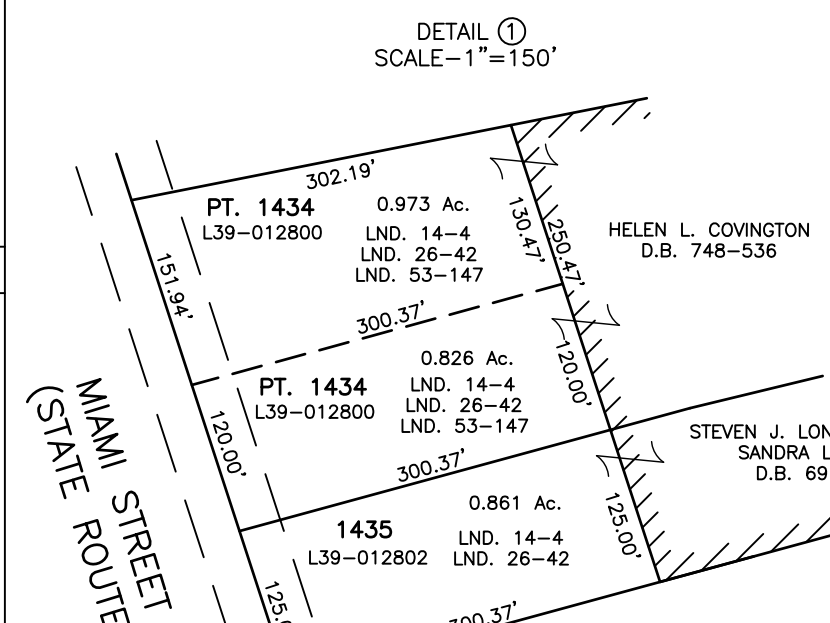
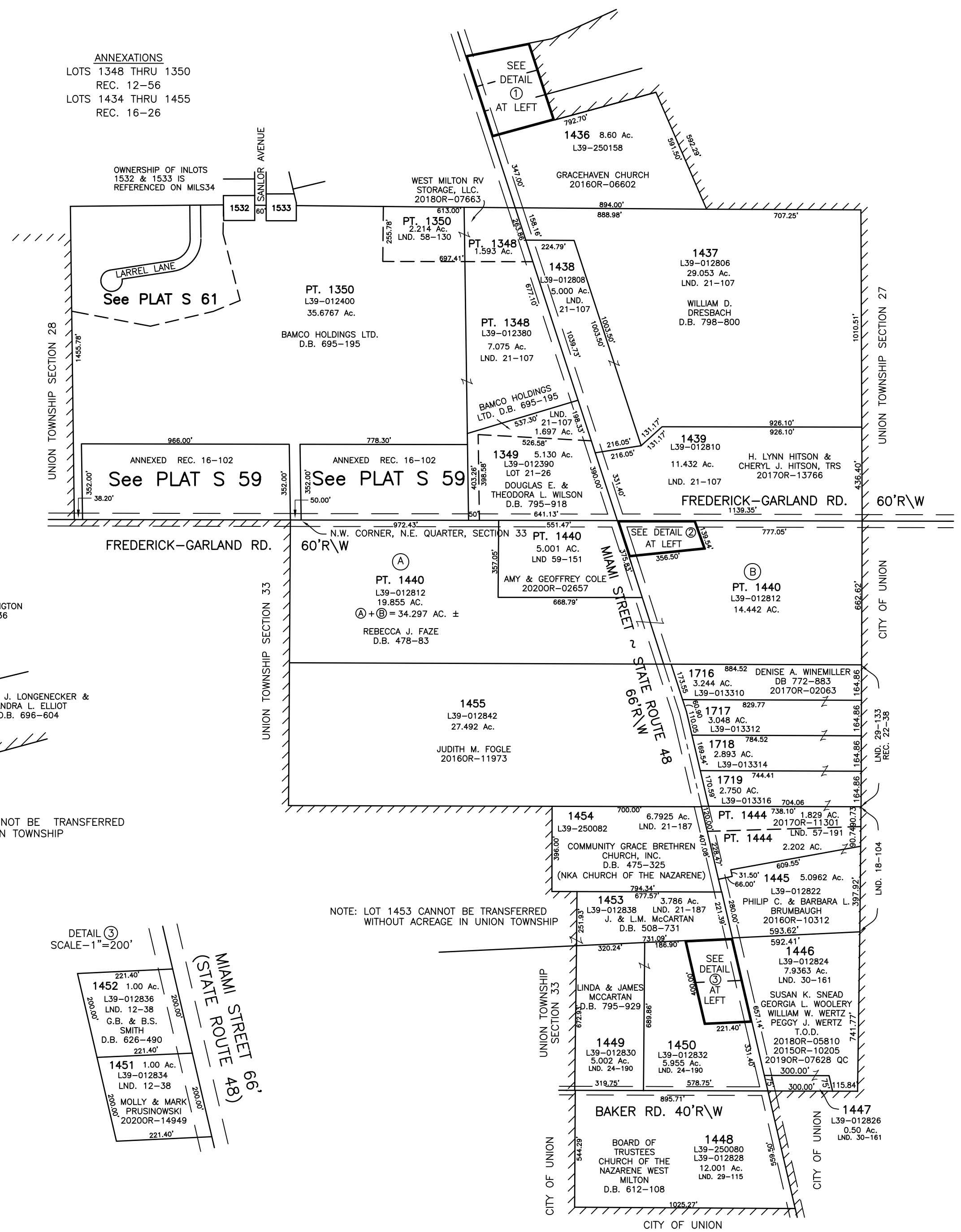


ABBREVIATION LEGEND	
2014OR-07759	= RECORDER'S DOCUMENT NUMBER
OR 406-509	= OFFICIAL RECORD 406 PAGE 509
D.B. 677-326	= DEED BOOK 677, PAGE 326
REC. 18-87	= RECORDER'S PLAT BOOK 18, PAGE 87
LND. 56-145	= LAND SURVEY VOLUME 56, PAGE 145
LOT 24-200	= LOT SURVEY VOLUME 24, PAGE 200
R.R. 8-18	= ROAD RECORD VOLUME 8, PAGE 18
R/W	= RIGHT OF WAY
C	= CENTERLINE
AC.	= ACRES
TWP.	= TOWNSHIP
TR.	= TRACT
IL	= INLOT

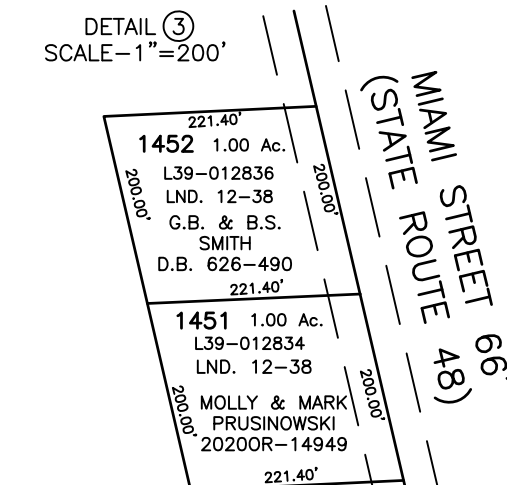
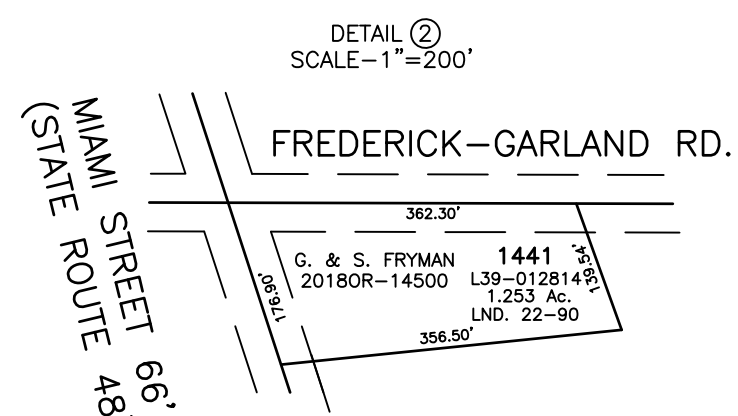
LINE LEGEND	
	Blow-up Boundary
	Property Line
	Lot Split Line
	Section Line
	Centerline
	Right-of-Way Line
	Corporation Line

SURVEY INDEX		
LND 11-116	LOT 21-26	REC 12-56
LND 12-38		REC 16-26
LND 14-4		REC 22-38
LND 18-104		
LND 21-107		
LND 21-187		
LND 22-90		
LND 24-190		
LND 26-42		
LND 29-115		
LND 29-133		
LND 30-161		
LND 58-130		
LND 59-151		

ANNEXATIONS
 LOTS 1348 THRU 1350
 REC. 12-56
 LOTS 1434 THRU 1455
 REC. 16-26



NOTE:
LOTS 1434 AND 1435 CANNOT BE TRANSFERRED
WITHOUT ACREAGE IN UNION TOWNSHIP



PREPARED BY: MIAMI COUNTY ENGINEER'S MAP DEPARTMENT
 PAUL P. HUELSKAMP P.E., P.S., COUNTY ENGINEER
 DATE: JANUARY, 1993
 REVISED: October 15, 2020 DSTUMPPF