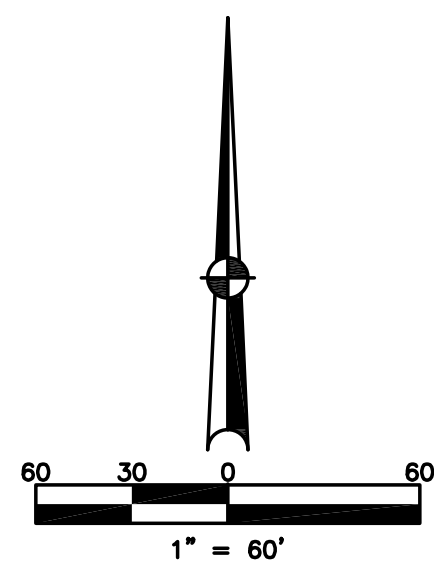


LENA (UNINCORPORATED VILLAGE)  
MIAMI COUNTY, OHIO

BROWN TOWNSHIP  
SECTION 1 TOWN 2 RANGE 12

PARCEL ID NUMBER  
B04-\_\_\_\_\_

PLAT 3



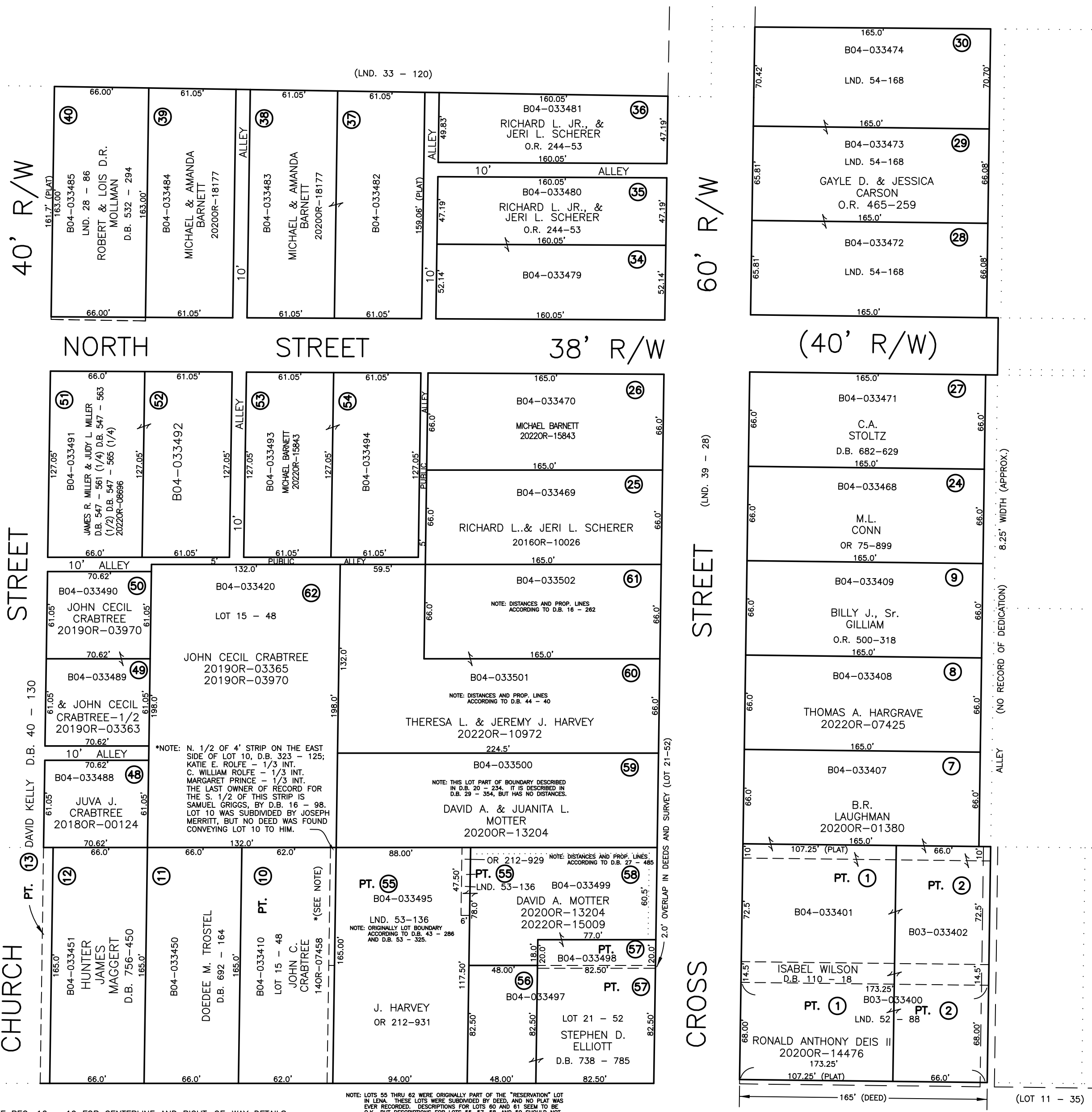
ABBREVIATION LEGEND		
2014OR-07759	=	RECORDER'S DOCUMENT NUMBER
OR 406-509	=	OFFICIAL RECORD 406 PAGE 509
D.B. 613-172	=	DEED BOOK 613, PAGE 172
REC. 15-72	=	RECORDER'S PLAT BOOK 15, PAGE 72
LND. 33-15	=	LAND SURVEY VOLUME 33, PAGE 15
LOT 19-12	=	LOT SURVEY VOLUME 19, PAGE 12
R.R. 8-29	=	ROAD RECORD VOLUME 8, PAGE 29
R/W	=	RIGHT OF WAY
CL	=	CENTERLINE
AC.	=	ACRES
TWP.	=	TOWNSHIP
TR.	=	TRACT
IL	=	INLOT

LINE LEGEND		
	=	Blow-up Boundary
	=	Property Line
	=	Lot Split Line
	=	Section Line
	=	Centerline
	=	Right-of-Way Line
	=	Corporation Line

SURVEY INDEX		
LND. 28-86	LOT 11-35	D.B. 9-15
LND. 33-120	LOT 15-48	D.B. 18-20
LND. 39-28	LOT 21-52	D.B. 24-409
LND. 52-88		REC. 16-19
LND. 53-136		
LND. 54-168		



PREPARED BY: MIAMI COUNTY ENGINEER'S MAP DEPARTMENT  
PAUL P. HUELSKAMP, COUNTY ENGINEER  
DATE: MAY 6, 1996  
REVISED: November 2, 2022 APALMER

U.S. ROUTE 36 (R/W VARIES)  
LOTS 1 THRU 23 - D.B. 9 - 15  
LOTS 24 THRU 33 - D.B. 18 - 20  
LOTS 34 THRU 54 - D.B. 24 - 409