

Laura  
(CORPORATION)

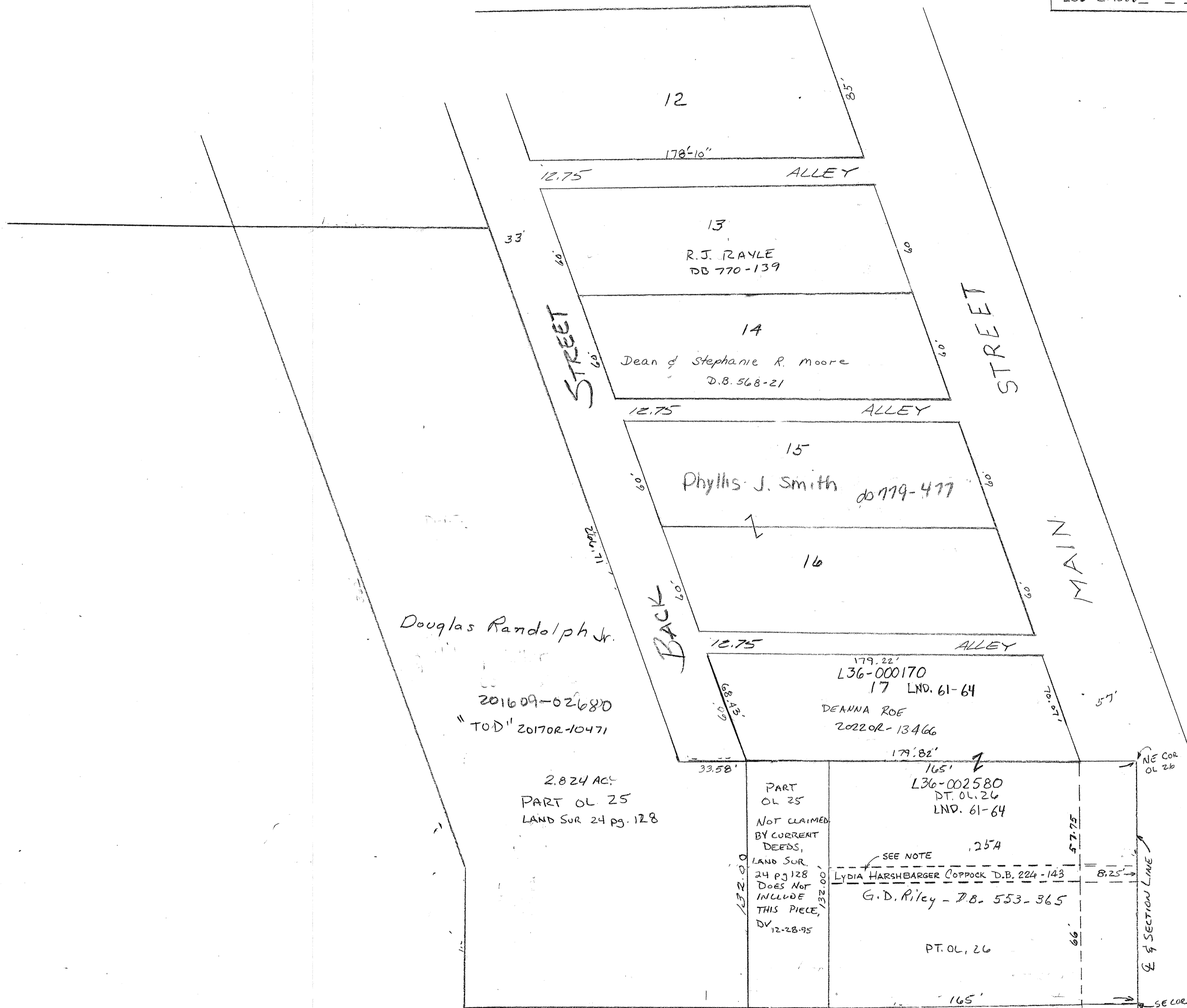
(WARD)

(PRECINCT)

PLAT NO. 6

SCALE 1 INCH 40 FEET

SMDA NUMBER  
L36-LA006 - - - - -



FOR OL 26,  
SEE REC. BK 2 PGS 131  
AND 141 & D.B. 84 PG. 566

NOTE: 8.25 FT. STRIP IN CENTER PART OF OL 24  
WAS HISTORICALLY INCLUDED WITH SOUTH  
PART OF THE LOT, UP TO AND INCLUDING  
D.B. 224-143. BY CERTIFICATE OF TRANSFER  
IN D.B. 243-24, DATED NOV. 4, 1942, THE  
DESCRIPTION WAS ERRONEOUSLY REVISED  
TO "66 FEET OFF THE SOUTH PART OF  
OUTLOT 24", LEAVING THE STRIP IN QUESTION.  
-ANDY SMITH, MAP DEP'T. 10-22-2019

REVISED 9/13/22