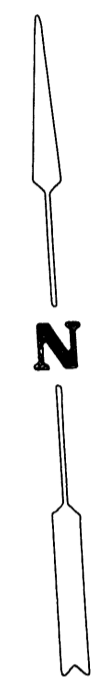
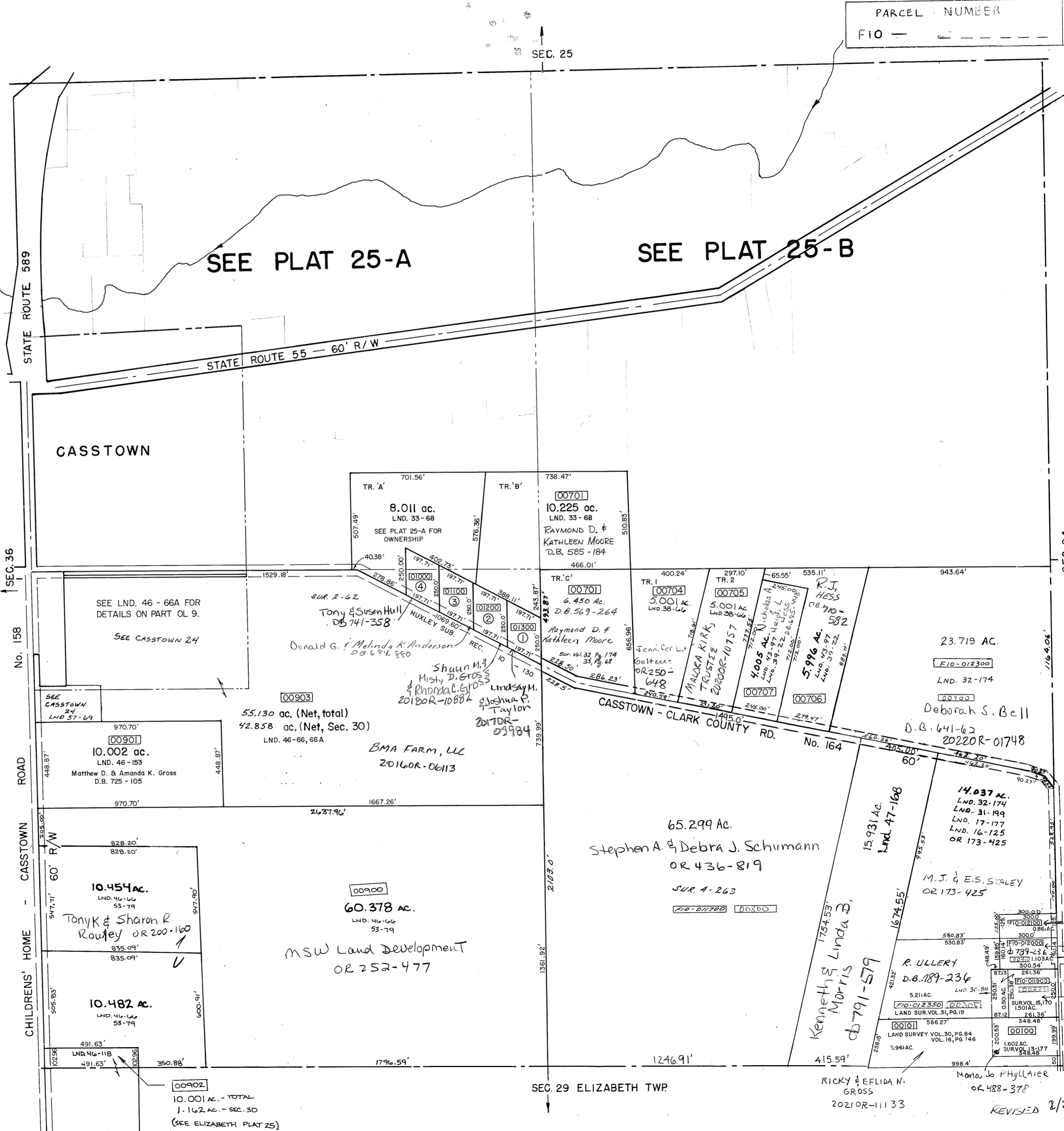


SCALE: 1" = 400'

PARCEL NUMBER
F10 -

SURVEYS	
SUR. 4-263 SUR. 13-177 SUR. 15-170 SUR. 16-34 SUR. 16-125 SUR. 16-146 SUR. 17-177 SUR. 30-84 SUR. 31-19 SUR. 32-174 LND. 38-66 LND. 39-22 LND. 43-97 LND. 47-168	S.E. QUARTER
SUR. 4-172 SUR. 4-203 SUR. 4-348-349 SUR. 5-137 REC. BK. 9-32 SUR. 15-148 SUR. 17-37 SUR. 17-127 SUR. 19-107 SUR. 23-11 SUR. 22-116 SUR. 22-135 SUR. 28-109 LND. 33-68	N.E. QUARTER
SUR. 2-36 SUR. 2-62 REC. BK. 10-130 LND. 33-68 LND. 46-66, 66A LND. 46-118 LND. 46-153 LND. 53-79 LND. 57-69	S.W. QUARTER
SUR. 4-229 SUR. 4-305 SUR. 6-152 SUR. 7-8 SUR. 10-103 SUR. 10-132 SUR. 15-21 SUR. 18-66 SUR. 19-37 SUR. 23-97 SUR. 23-22 SUR. 25-97 SUR. 27-61 SUR. 28-109 Lot 14-189 REC. 10-130 SUR. 32-92 SUR. 35-26 LND. 33-68	N.W. QUARTER



SEC. 24

SEC. 29 ELIZABETH TWP

00902
10.001 ac. - TOTAL
1.162 ac. - SEC. 30
(SEE ELIZABETH PLAT 25)

REVISOR 2/2/22 ADP