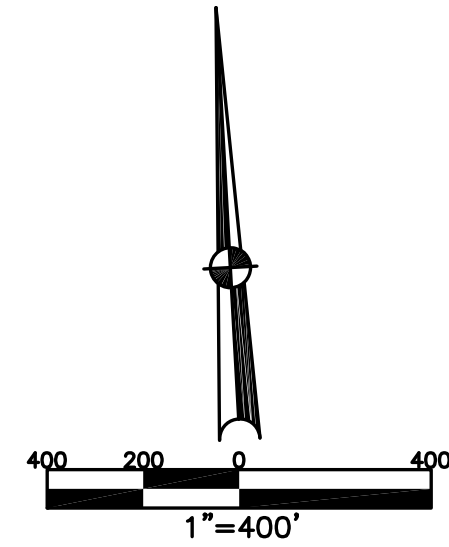


LOST CREEK TWP.  
MIAMI COUNTY, OHIO

SECTION 12 TOWN 2 RANGE 10

PARCEL NUMBER  
F10-014500

PLAT 10



ABBREVIATION LEGEND	
OR 257-619	= OFFICIAL RECORD 257 PAGE 619
D.B. 613-172	= DEED BOOK 613, PAGE 172
REC. 15-72	= RECORDER'S PLAT BOOK 15, PAGE 72
LND. 33-15	= LAND SURVEY VOLUME 33, PAGE 15
LOT 19-12	= LOT SURVEY VOLUME 19, PAGE 12
R.R. 8-29	= ROAD RECORD VOLUME 8, PAGE 29
R/W	= RIGHT OF WAY
CL	= CENTERLINE
AC.	= ACRES
TWP.	= TOWNSHIP
TR.	= TRACT
Ⓢ	= LOT CREATED BY RECORDER'S PLAT

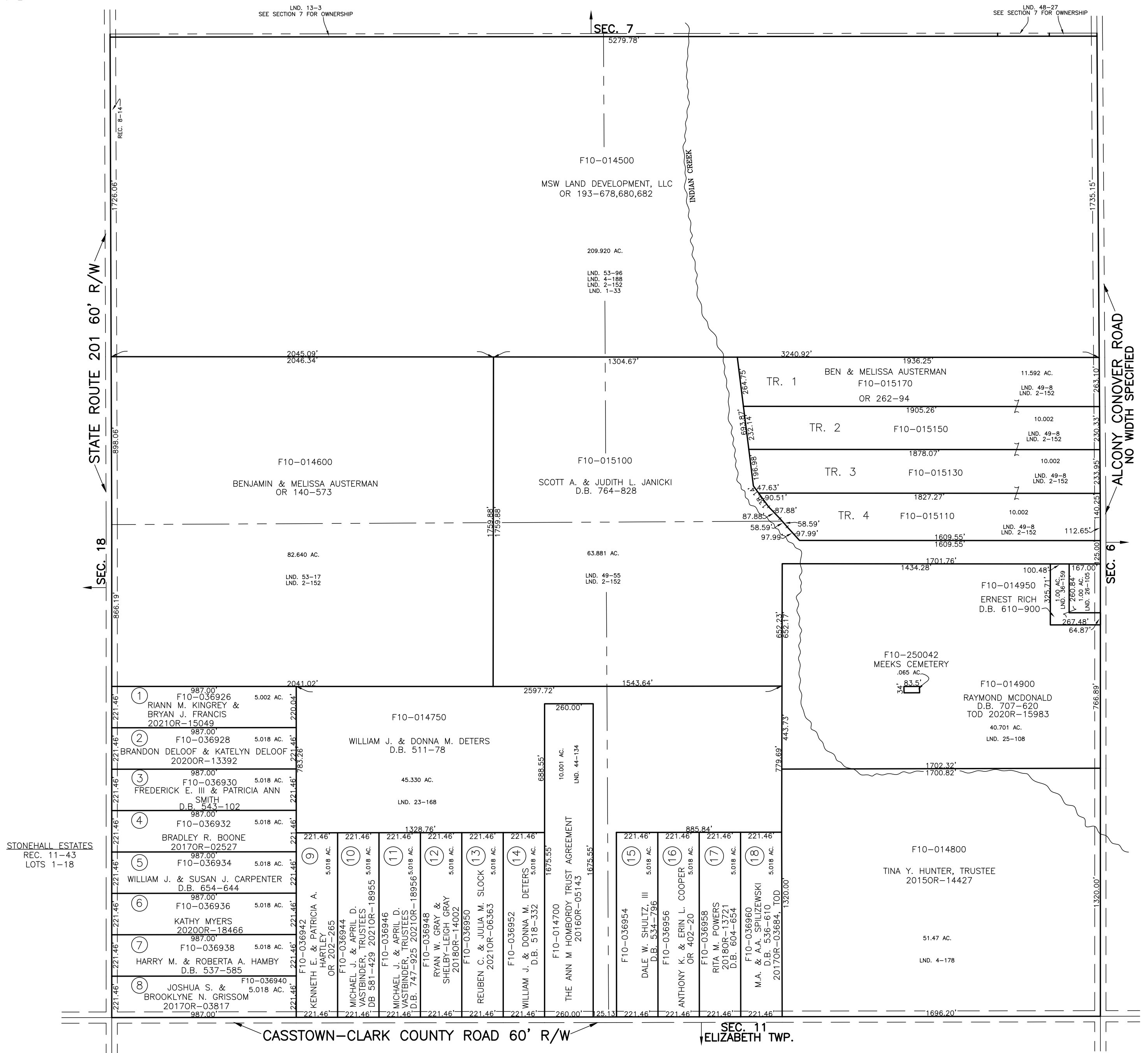
LINE LEGEND	
	Blow-up Boundary
	Property Line
	Lot Split Line
	Section Line
	Centerline
	Right-of-Way Line
	Corporation Line

SURVEY INDEX	
NORTHEAST QUARTER	
LND. 1-33	
LND. 2-152	
LND. 4-188	
LND. 13-5	
LND. 48-27	
LND. 49-8	
LND. 53-96	
SOUTHEAST QUARTER	
LND. 2-152	REC. 11-43
LND. 4-178	
LND. 13-168	
LND. 25-108	
LND. 26-105	
LND. 36-159	
SOUTHWEST QUARTER	
LND. 2-152	REC. 8-14
LND. 23-168	REC. 11-43
LND. 44-134	
LND. 53-17	
NORTHWEST QUARTER	
LND. 2-152	REC. 8-14
LND. 13-3	
LND. 53-17	
LND. 53-96	

PREPARED BY: MIAMI COUNTY ENGINEER'S MAP DEPARTMENT  
PAUL P. HUELSKAMP, P.E., P.S., COUNTY ENGINEER  
DATE: JULY 24, 2014 MB

REVISED: November 2, 2021 MSTORMS



STONEHALL ESTATES  
REC. 11-43  
LOTS 1-18

SEC. 11  
ELIZABETH TWP.