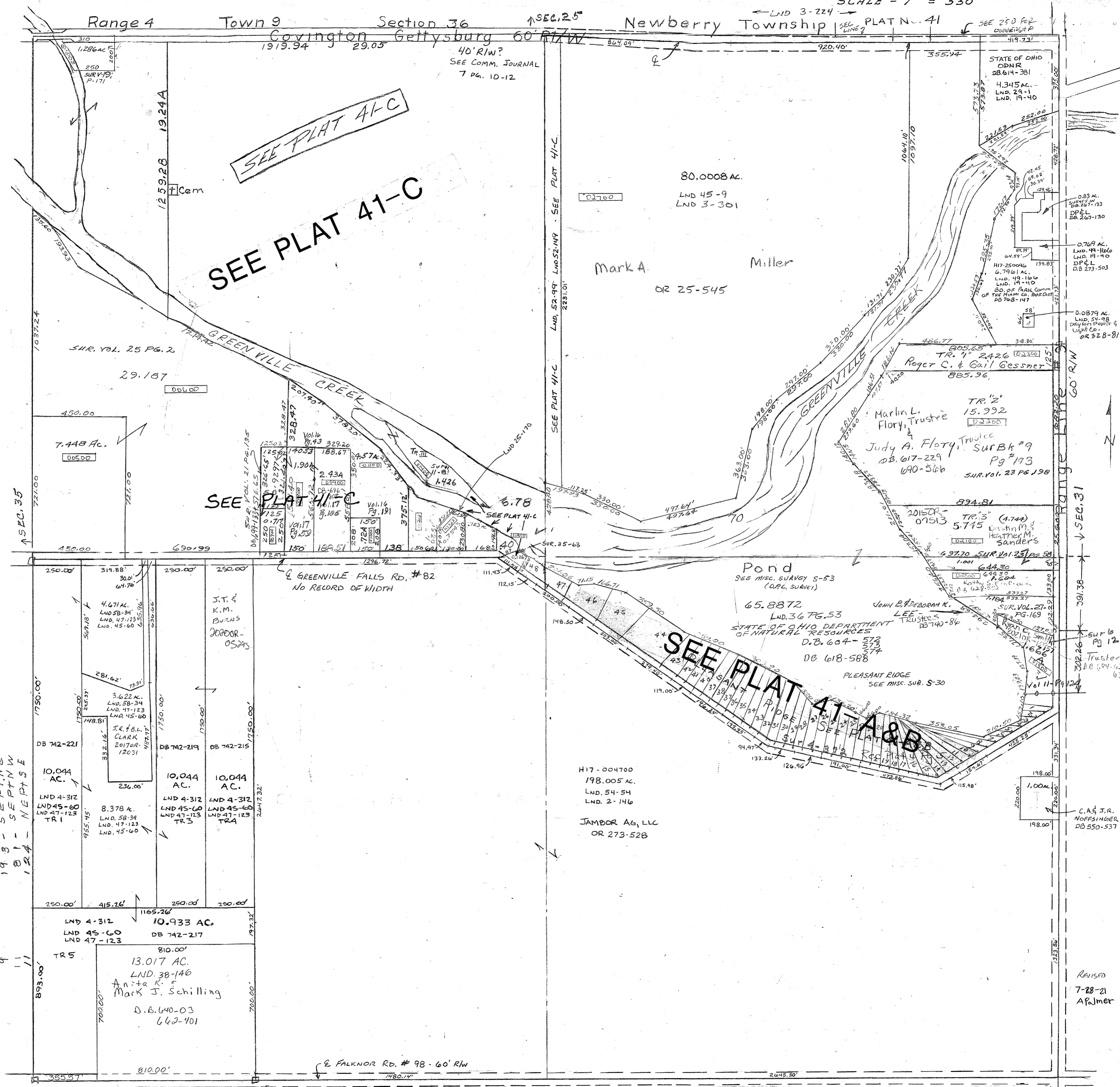


SEE PLAT 41-C

SEE PLAT 41-C

SEE PLAT 41-A & B

- Vol. 16 Pg. 191-193, Pt. N.W.
- Vol. 16 Pg. 43-5, E. Pt. N.E.
- Vol. 17 Pg. 59-5, Cen. Pt. N.W.
- Vol. 17 Pg. 185-5, Pt. N.W.
- LND. 38-146 S.W.
- LND. 45-60 SW Pt. SW Qtr.
- 301 & 224 - N. Cen. Pt. Sec.
- 312 - W. Pt. SW
- 372 - N. Pt. SE - Pleasant Ridge
- 163 - Est. Line N.E. Qtr.
- 124 - P. N.E. Pt. SE
- 193 - S.E. Pt. N.E.
- 181 - S.E. Pt. N.W.
- 124 - N.E. Pt. SE



80.0008 AC.
LND 45-9
LND 3-301

Mark A
OR 25-545

7.448 Ac.
00500

J.T. & K.M. BURNS
202008-05245

10.044 AC.
LND 4-312
LND 45-60
LND 47-123
TR 1

10.044 AC.
LND 4-312
LND 45-60
LND 47-123
TR 3

10.044 AC.
LND 4-312
LND 45-60
LND 47-123
TR 4

10.933 AC.
LND 4-312
LND 45-60
LND 47-123
TR 5

13.017 AC.
LND. 38-146
Anita K. & Mark J. Schilling
D.B. 640-03
662-401

Pond
SEE MISC. SURVEY S-53
(O.P.L. SURVEY)

65.8872
LND. 36 PG. 53
STATE OF OHIO DEPARTMENT OF NATURAL RESOURCES TRUSTEES
D.B. 604-572
573
574
D.B. 618-588

TR. 1" 2426
885.96
Roger C. & Gail Gessner

TR. 2'
15.992
D2200
Marlin L. Floty, Trustee
Judy A. Floty, Trustee
D.B. 617-229
640-566
SUR. Vol. 23 PG. 198

TR. 3' (4.744)
5.715
D2100
Justin M. & Heather M. Sanders

H17-004700
198.005 AC.
LND. 54-54
LND. 2-146

JAMBOR AG, LLC
OR 273-528

1.00 AC.
198.00'

C.A. J.R. NOFFSINGER
DB 550-537