

Town 9

Range 4

Section 36

Newberry

Plat 41-B

SCALE - 1" = 100'

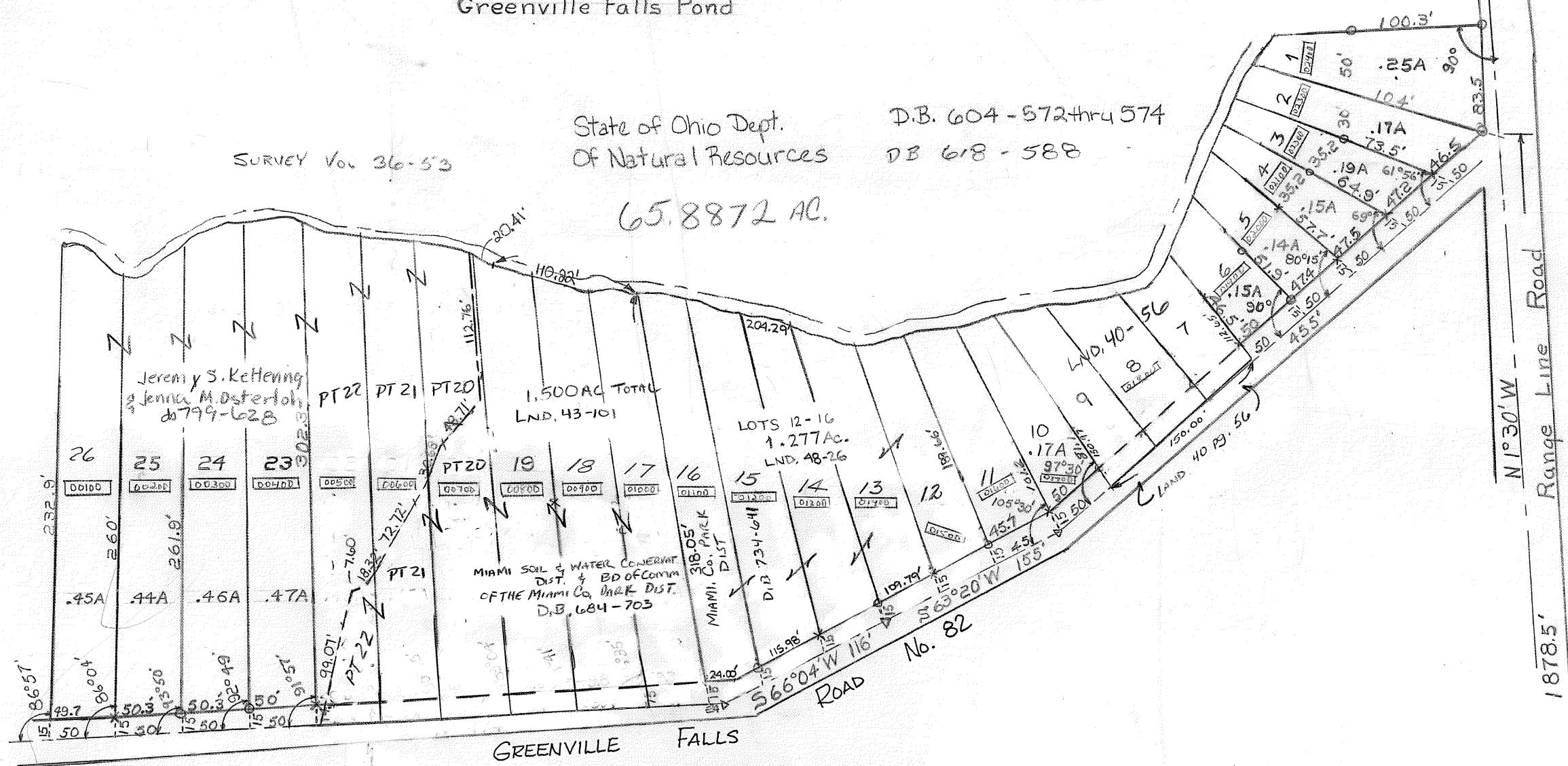
Lot	Owner	Acreage
1	Lottie E. Leeper d763-543	.25
2	"	.17
3	"	.19
4	"	.15
5	"	.14
6	"	.15
7	WCF Rentals OR 328-144	.12
8		.15
9		.15
10	BOARD OF COMMISSIONERS OF MIAMI COUNTY PARIS DISTRICT OR 188-247	.17
11		.21

SMDA NUMBER
H17-NB0416-

Pleasant Ridge



Greenville Falls Pond



Pleasant Ridge - Rec. 4-5

S.E. Cor. of Sec. 36

REVISED 6-28-2007

DVENTURA