

West Milton  
NORTH HALF

Plat. No. N 45

N45

Scale - 1 Inch = 50 Feet

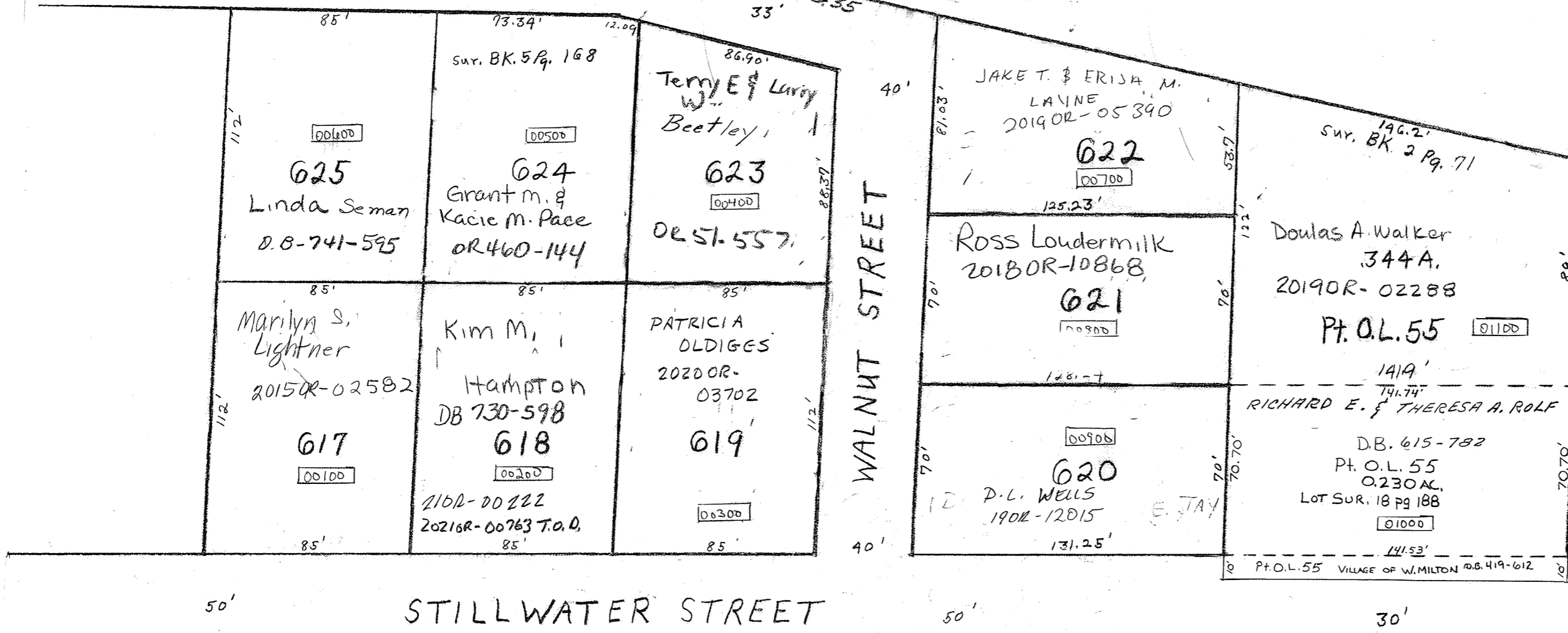
SMDA NUMBER  
L39 NH045

BETLEY'S SUBD #1  
REC. 6-35  
LOTS 613 THRU 627

O.L. NO. 74

THIS PART OF WATER STREET VACATED  
BY ORDINANCE NO. 116 DATED AUGUST 12, 1969  
SEE REC'S BOOK NO. 10 PG. 57  
VACATED  
164.36  
164.86  
38.74  
33'  
WATER STREET  
REC. BK. 6, PG. 35

INLOT NO. 232



50'

STILLWATER STREET

50'

30'

MAIN STREET