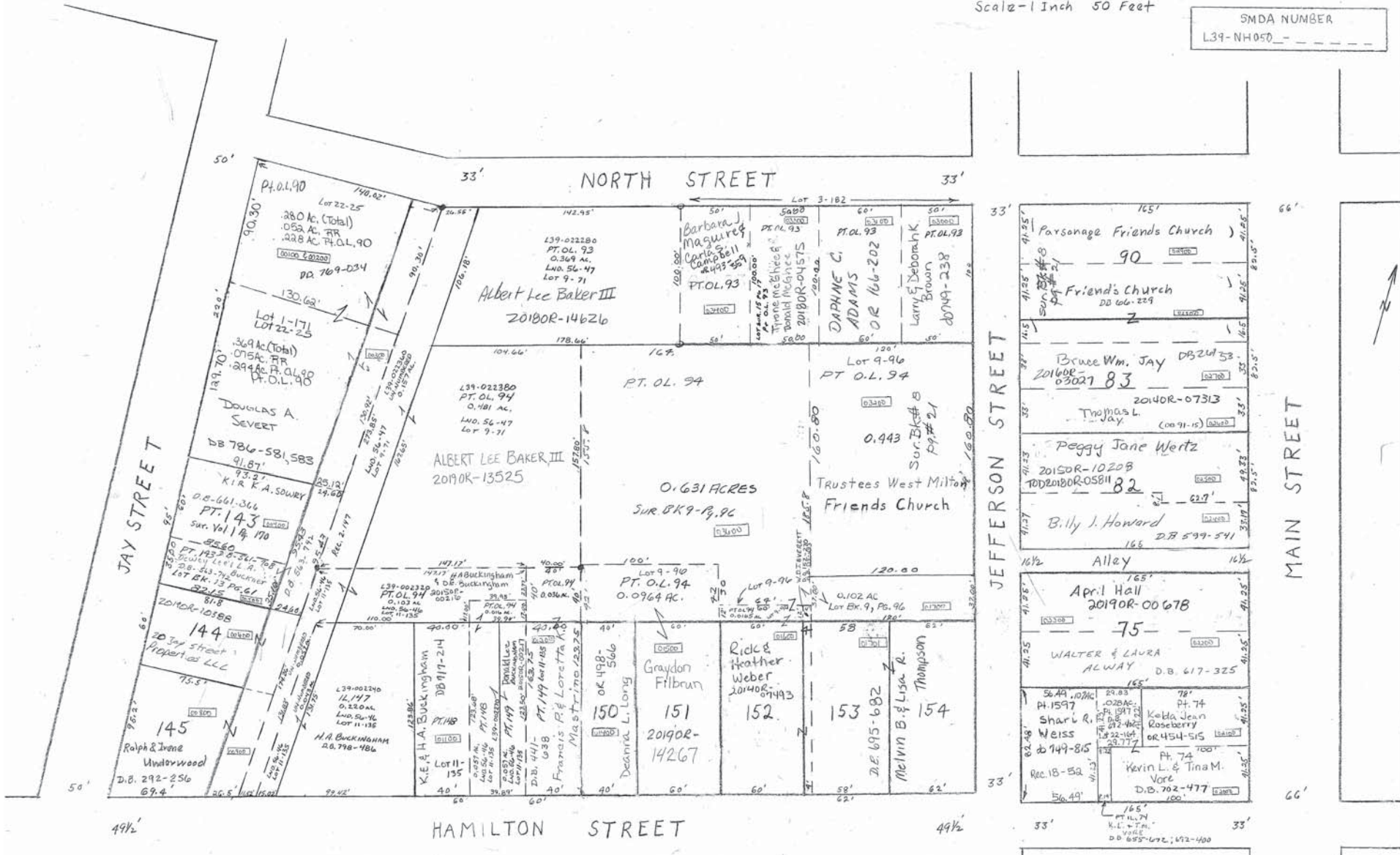


SMDA NUMBER
L39-NH050



Recorder's Plat
 74, 75, 82, 83, 89 Deed BK 11 Pg. 58
 143, 144, 145, 147 thru 154 Plat BK 2 Pg. 147
 O.L. 90, 93, 8 94 Plat BK 2 Pg. 147
 D.T. & C. RAILROAD - UNNUMBERED LAND REC. 2-147