

Range 5 Town 8 Section 16 Newberry Township

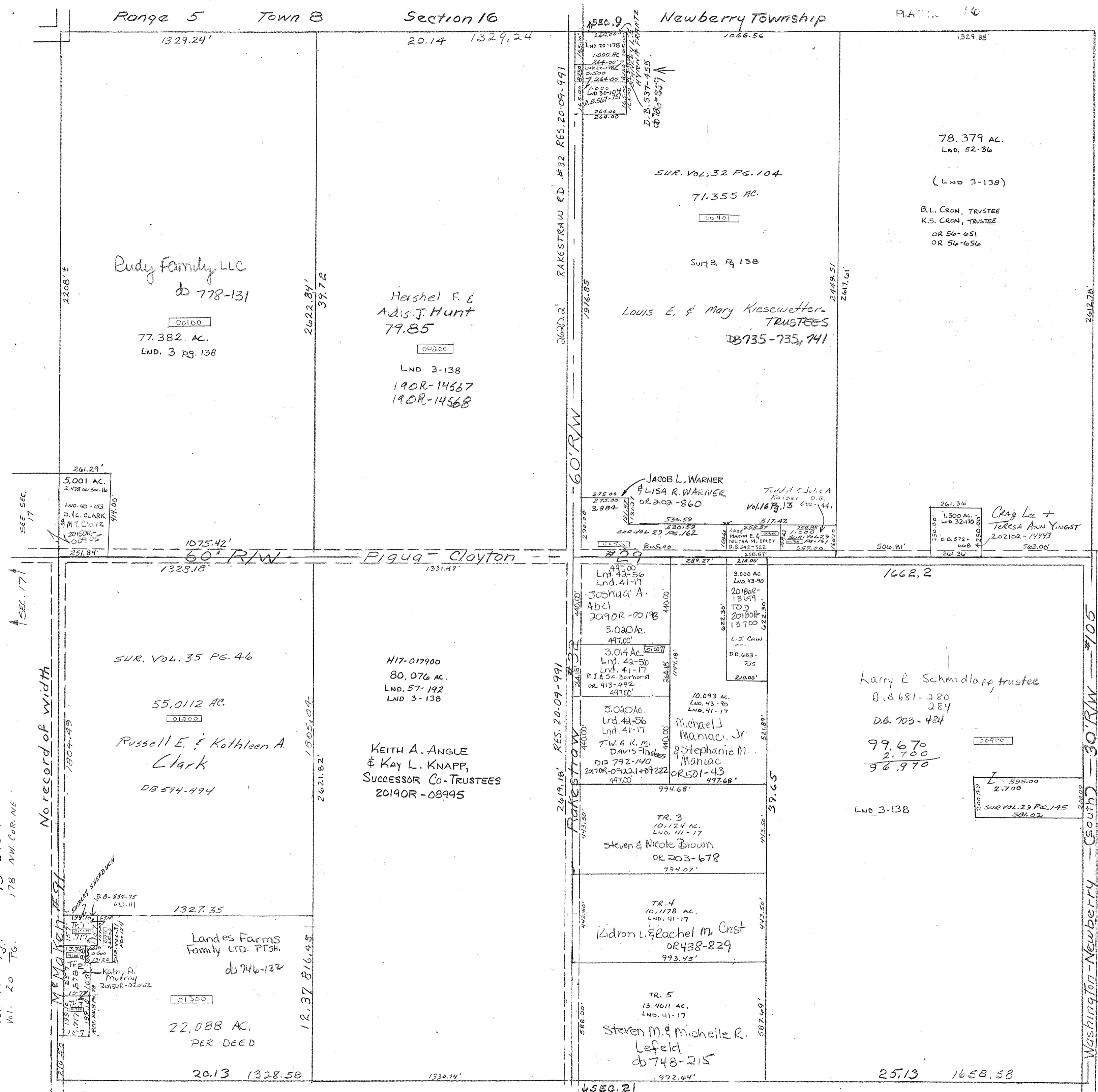
SMDA NUMBER
H17-0016



SEC. 15 WASHINGTON

Washington-Newberry (South) 30' RW

Surveys +
Vol. 2 page 44 Whole
Vol. 3 page 138 (Whole)
Rec. Vol. 8 Page 78 SW.PT.S.W
Vol. 16 Pg. 13 S. Cen. Pt. NE.
Vol. 20 Pg. 178 NW Cor. NE.



Rudy Family LLC
db 778-131
00100
77.382 AC.
LND. 3 PG. 138

Harshel F. &
Adis J. Hunt
79.85
00200
LND 3-138
190R-14567
190R-14568

LOUIS E. & Mary Kiesewetter
TRUSTEES
DB 735-735, 741

78.379 AC.
LND. 52-36
(LND 3-138)
B.L. CRON, TRUSTEE
K.S. CRON, TRUSTEE
OR 56-651
OR 56-656

5,001 AC.
2,438 AC. Sec. 16
D. & C. CLARK
& M. T. CLARK
2015OR-009405

JACOB L. WARNER
& LISA R. WARNER
OR 202-860
Tedd A. & Julie A.
Kaiser D.B.
Vol. 16 Pg. 13 600-441

Craig Lee +
Teresa Ann Yingst
2021OR-14443

SUR. VOL. 35 PG. 46
55.0112 AC.
01300
Russell E. & Kathleen A.
Clark
DB 594-494

H17-017900
80.076 AC.
LND. 57-192
LND. 3-138
KEITH A. ANGLE
& KAY L. KNAPP,
SUCCESSOR CO-TRUSTEES
2019OR-08995

Larry R. Schmidlapp trustee
D.B. 681-280
284
D.B. 703-484
99.670
2.700
96.970
00900

Landes Farms
Family LTD. PTSH.
db 746-122
01300
22,088 AC.
PER DEED
20.13 1328.58

TR. 3
10.124 AC.
LND. 41-17
Steven & Nicole Brown
OK 203-678
994.07'

TR. 4
10.1178 AC.
LND. 41-17
Lidron L. & Rachel M. Crst
OR 438-829
993.45'

TR. 5
13.4011 AC.
LND. 41-17
Steven M. & Michelle R.
Lefeld
db 748-215
992.64'

LND 3-138

595.00
2.700
SUR VOL. 29 PG. 145
581.02

No record of width

McMacken #91

SEC. 17

SEC. 21

SEC. 15