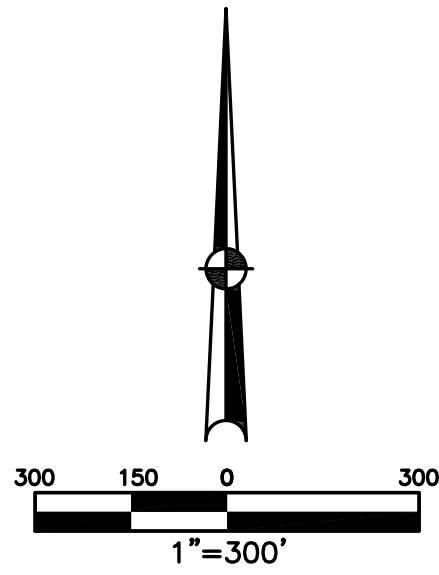


SECTION 16 & 21  
TOWN 6  
RANGE 5

VILLAGE OF WEST MILTON  
MIAMI COUNTY, OHIO

PARCEL ID NUMBER  
L39-\_\_\_\_\_

PLAT N 78



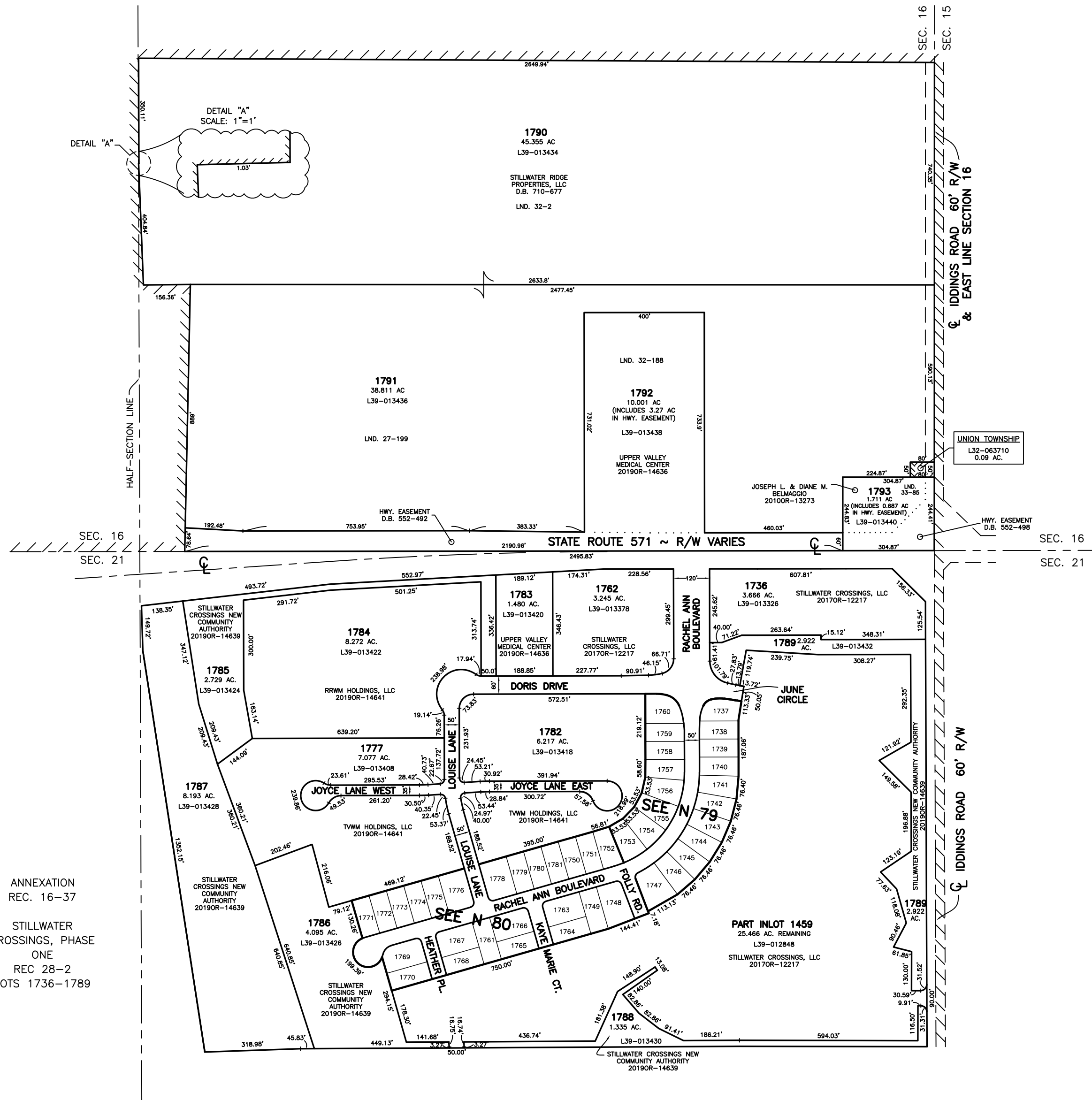
ABBREVIATION LEGEND		
2014OR-07759	=	RECORDER'S DOCUMENT NUMBER
OR 406-509	=	OFFICIAL RECORD 406 PAGE 509
D.B. 677-326	=	DEED BOOK 677, PAGE 326
REC. 18-87	=	RECORDER'S PLAT BOOK 18, PAGE 87
LND. 56-145	=	LAND SURVEY VOLUME 56, PAGE 145
LOT 24-200	=	LOT SURVEY VOLUME 24, PAGE 200
R.R. 8-18	=	ROAD RECORD VOLUME 8, PAGE 18
R/W	=	RIGHT OF WAY
C	=	CENTERLINE
AC.	=	ACRES
TWP.	=	TOWNSHIP
TR.	=	TRACT
IL	=	INLOT

LINE LEGEND		
	=	Blow-up Boundary
	=	Property Line
	=	Lot Split Line
	=	Section Line
	=	Centerline
	=	Easement
	=	Right-of-Way Line
	=	Corporation Line

SURVEY INDEX		
LND. 5-21	LOT	S.R. 571 & PLATS:
LND. 27-199		REC. 13-54, 54A
LND. 31-77		REC. 13-55
LND. 32-2		REC. 13-56
LND. 32-188		REC. 16-37
LND. 33-85		REC. 28-2



ANNEXATION  
REC. 16-37  
  
STILLWATER  
CROSSINGS, PHASE  
ONE  
REC 28-2  
LOTS 1736-1789

PREPARED BY: MIAMI COUNTY ENGINEER'S MAP DEPARTMENT  
PAUL P. HUELSKAMP, P.E., P.S., COUNTY ENGINEER

DATE: FEBRUARY 26, 2020 DS  
AUGUST 17, 2021 APALMER

REVISED: August 18, 2021 APALMER