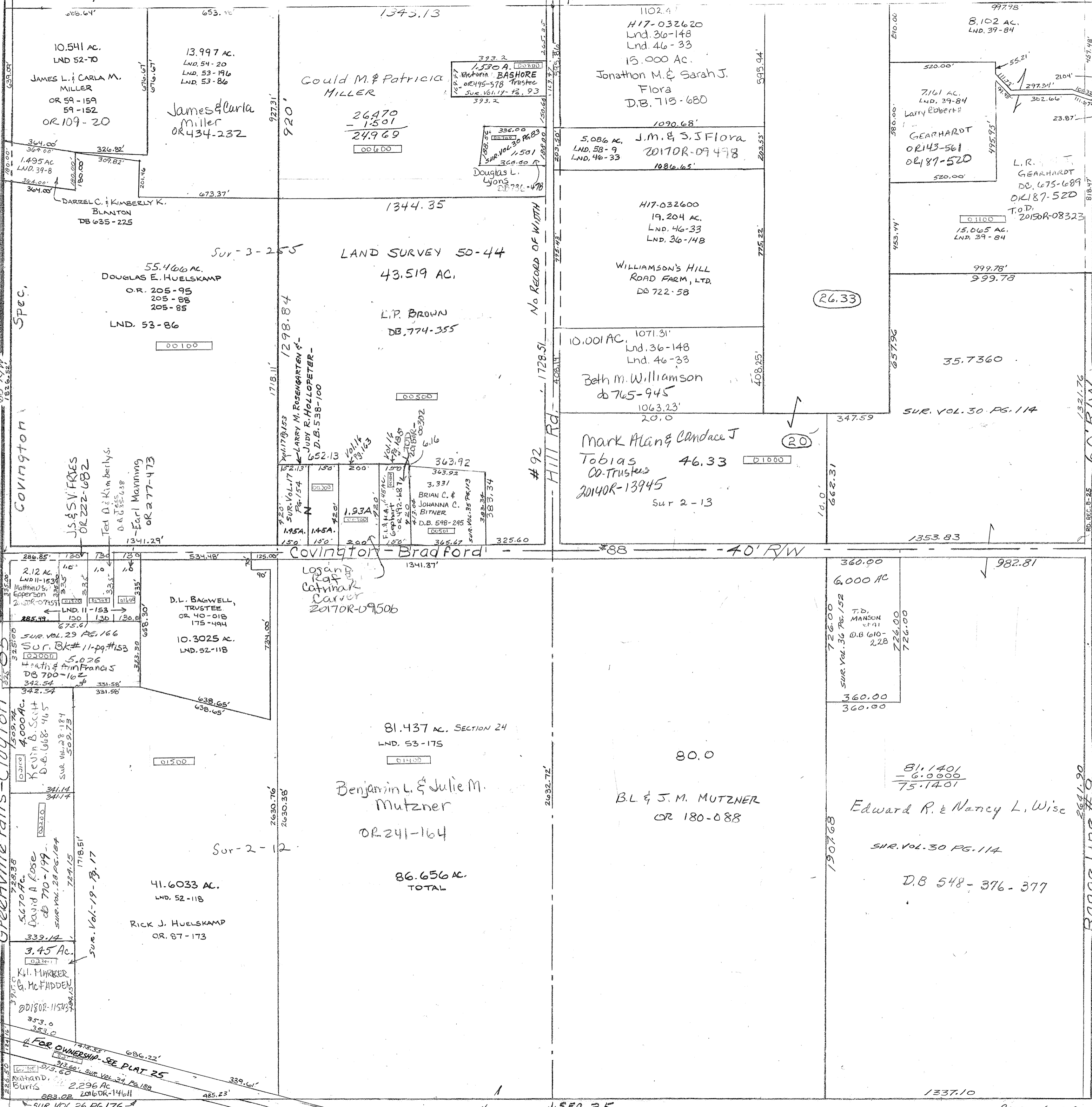


Vol. 16 Pg. 185 S.E. Pt. N.W.
 Vol. 17 Pg. 153 S. Pt. N.W.
 Vol. 17 Pg. 154 S. Pt. N.W.
 Vol. 39 Pg. 8 N.W. 1/4
 LND. 39-84 N.E. 1/4

Surveys +
 Vol. 2 page 12 - SW. 1/4
 Vol. 2 page 13 - SW. Cor. NE.
 Vol. 3 page 255 - NW. 1/4
 Vol. 11 " 153 - NW. Cor. SW.
 Vol. 16 " 163 - S.E. Pt. N.W.



SMDA NUMBER
 H17-NB004



SEC. 19

Range Line #9