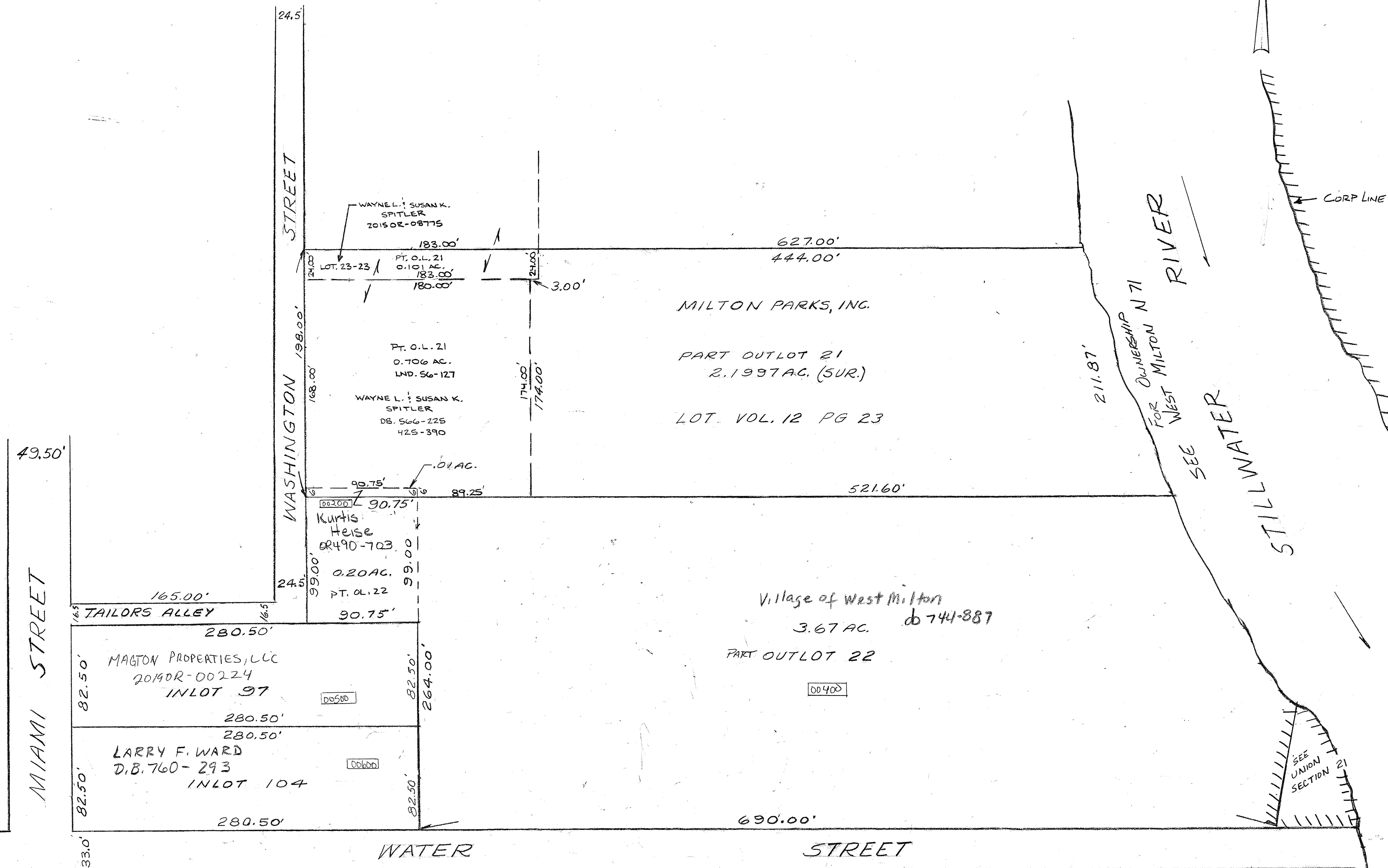
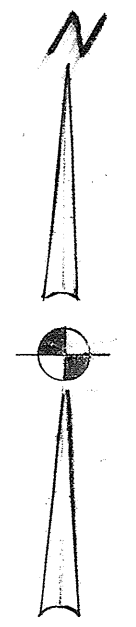


WEST MILTON

N67
PLAT NO. 67 N
SCALE 1" = 60 FEET

SMDA NUMBER
L39-NH067

DEED BK. 11 PG. 58



WASHINGTON STREET

MIAMI STREET

MILTON RIVER

STILLWATER

CORP LINE

WAYNE L. & SUSAN K. SPITLER
2015OR-08775

LOT. 23-23
PT. O.L. 21
0.101 AC.
183.00'

PT. O.L. 21
0.706 AC.
IND. 56-127

WAYNE L. & SUSAN K. SPITLER
DB. 566-225
425-390

0.01 AC.
Kurtis Heise
DB. 490-703

0.20 AC.
PT. O.L. 22

MAGTON PROPERTIES, LLC
2014OR-00224
IN LOT 97

LARRY F. WARD
D.B. 760-293
IN LOT 104

MILTON PARKS, INC.

PART OUTLOT 21
2.1997 AC. (SUR.)

LOT VOL. 12 PG 23

Village of West Milton
3.67 AC. db 744-887

PART OUTLOT 22