

WEST MILTON

NORTH HALF

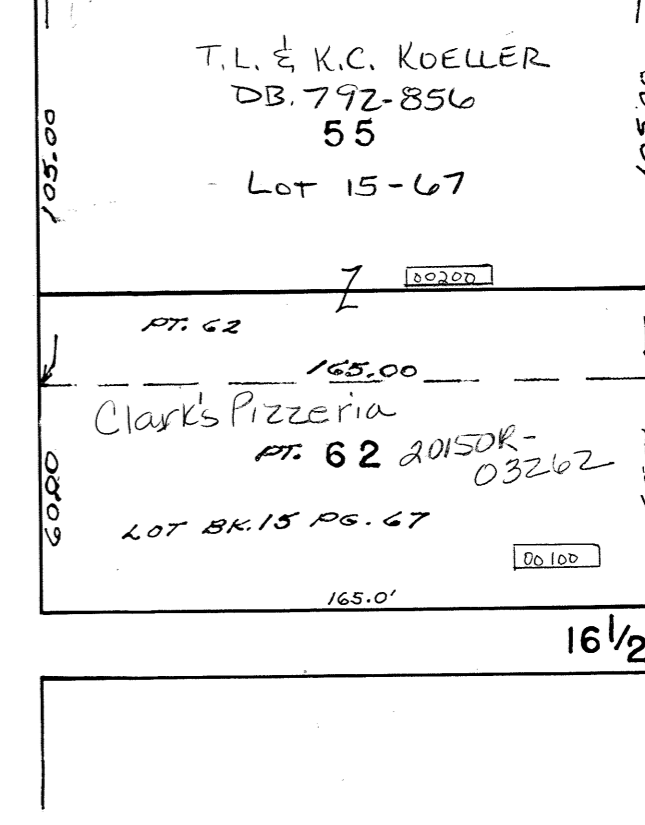
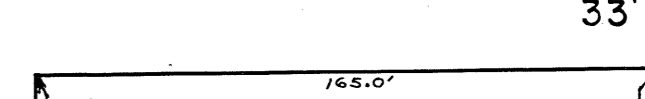
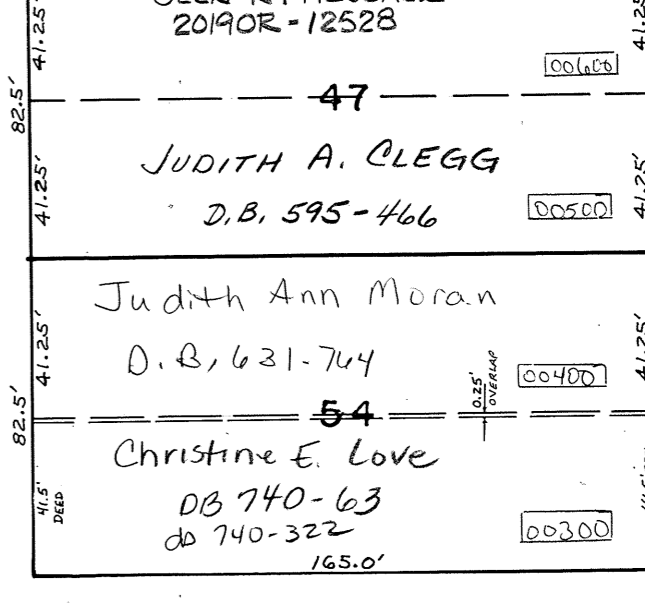
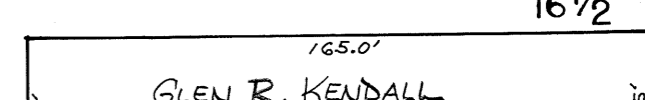
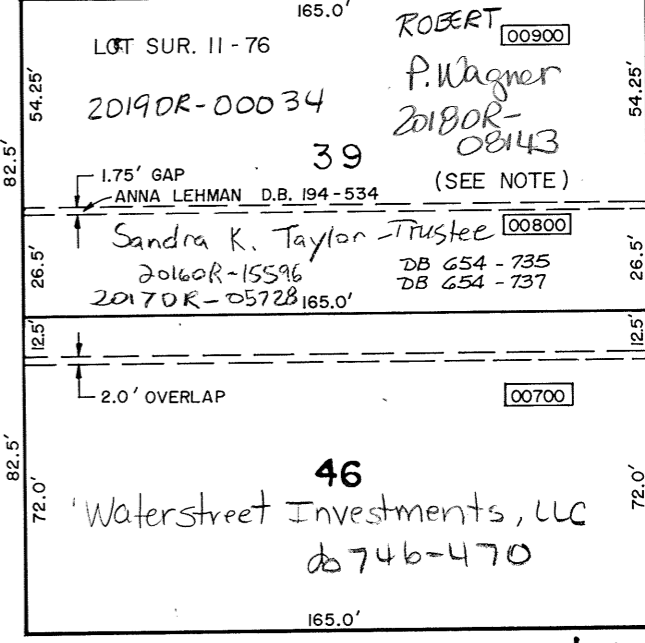
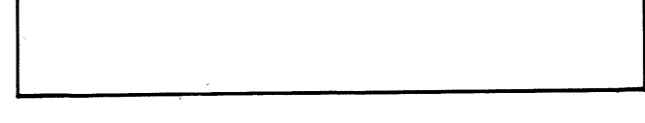
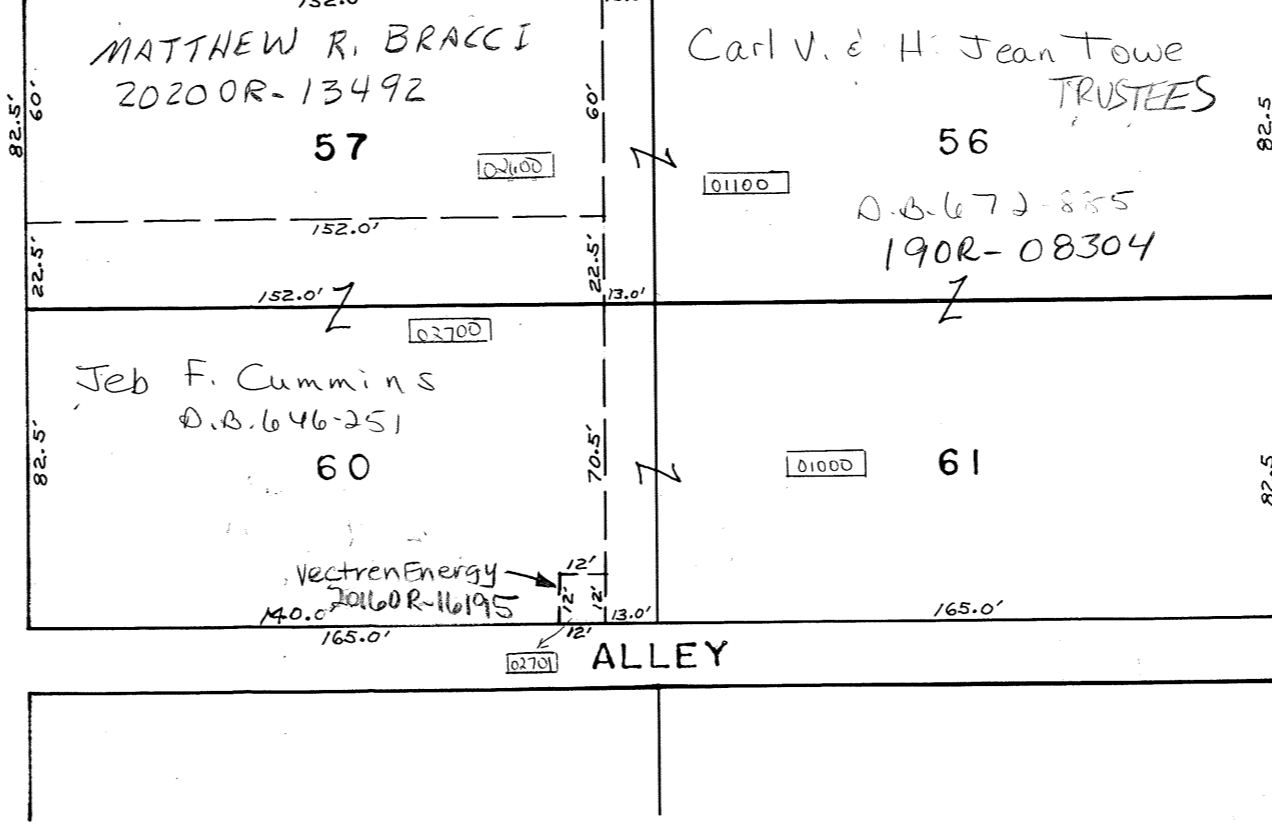
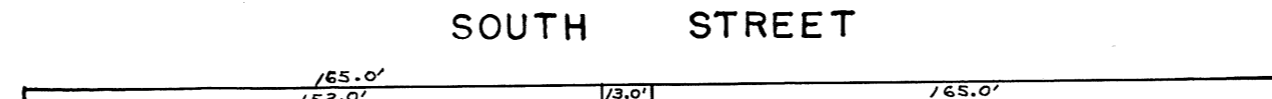
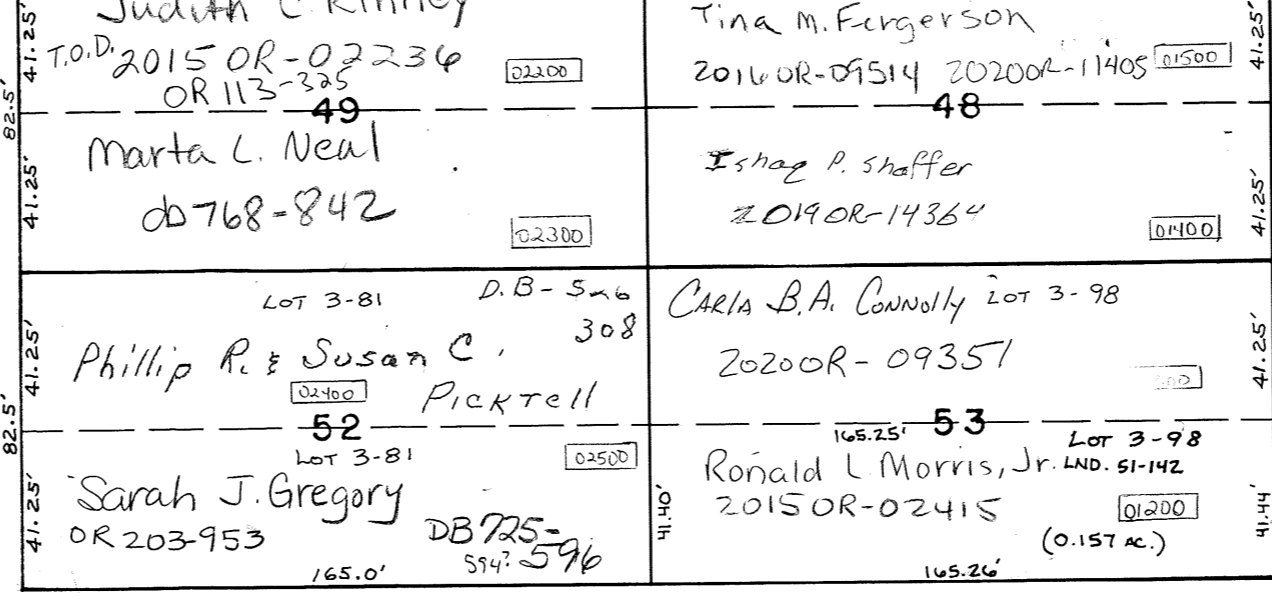
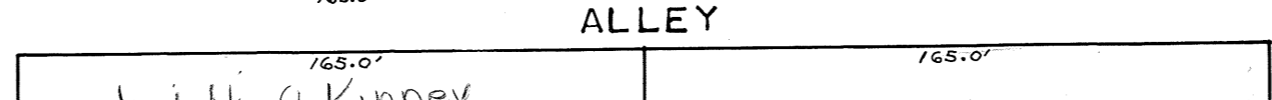
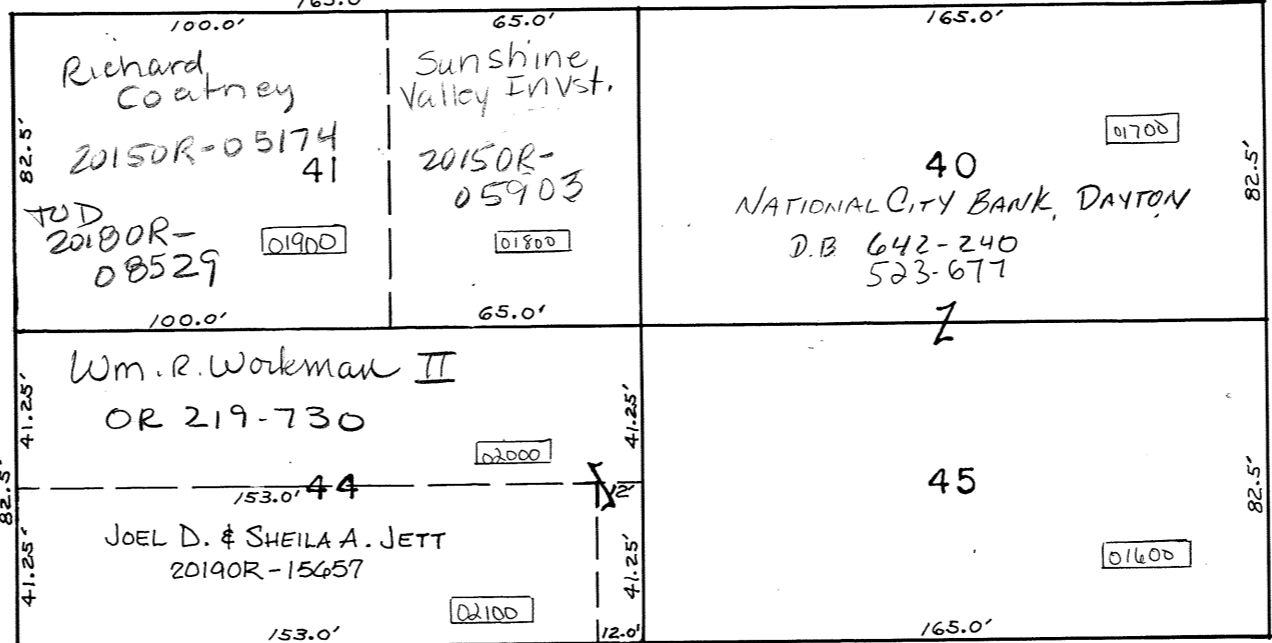
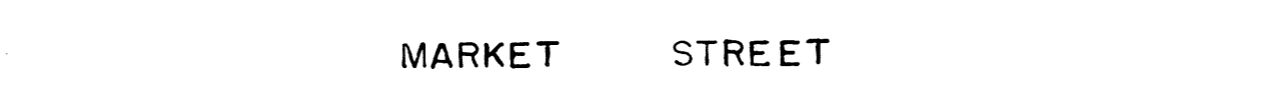
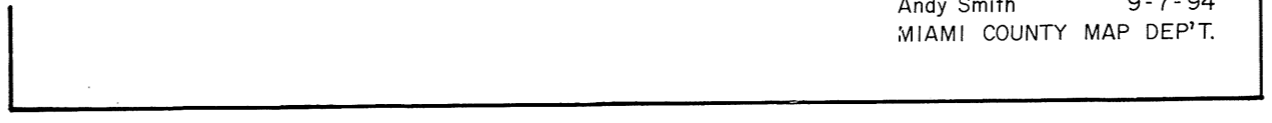
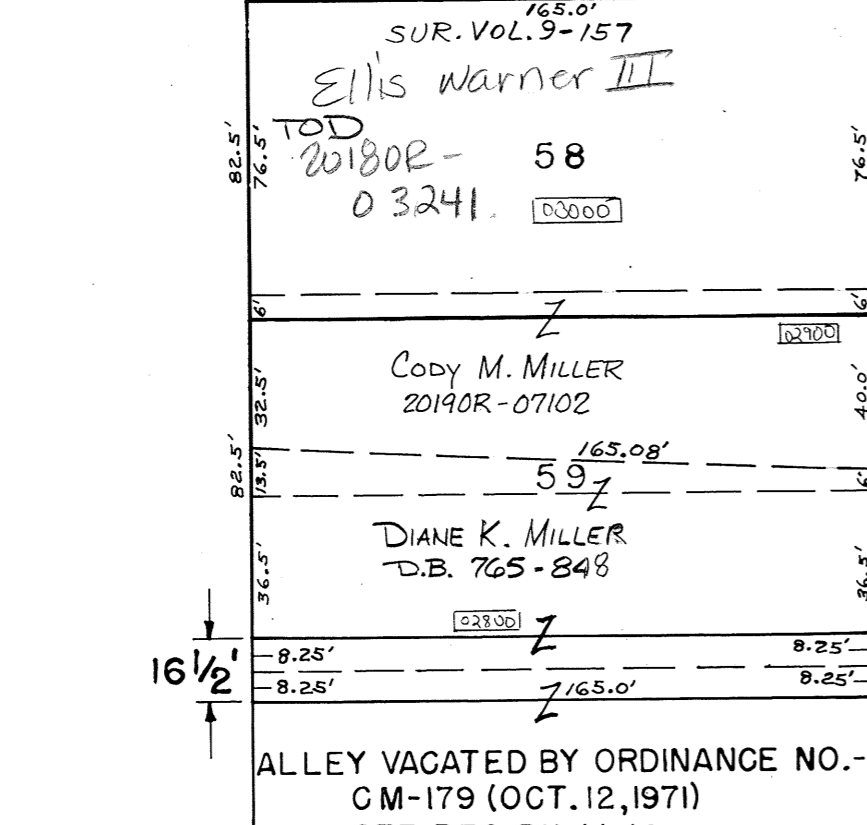
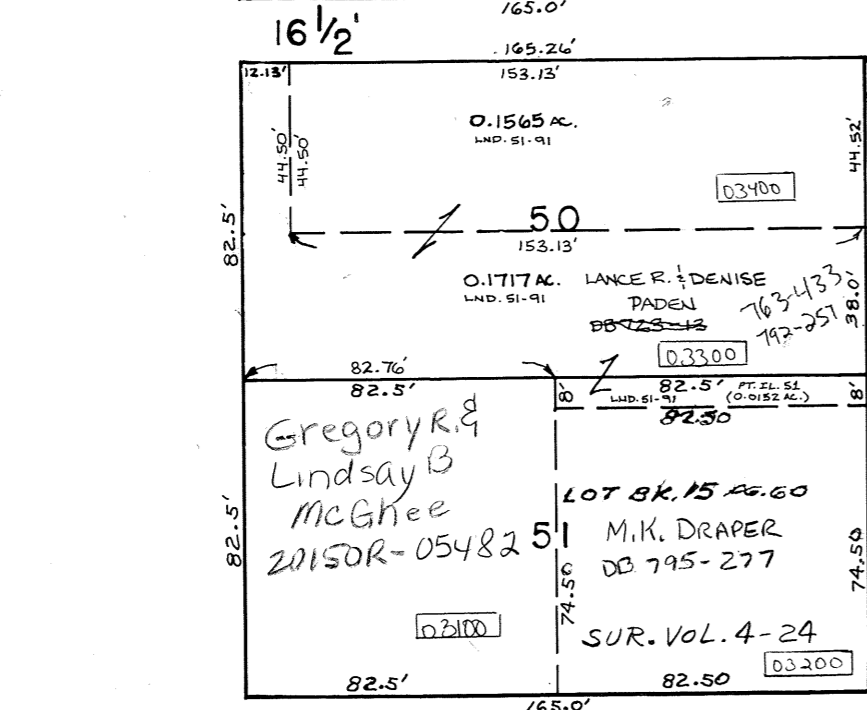
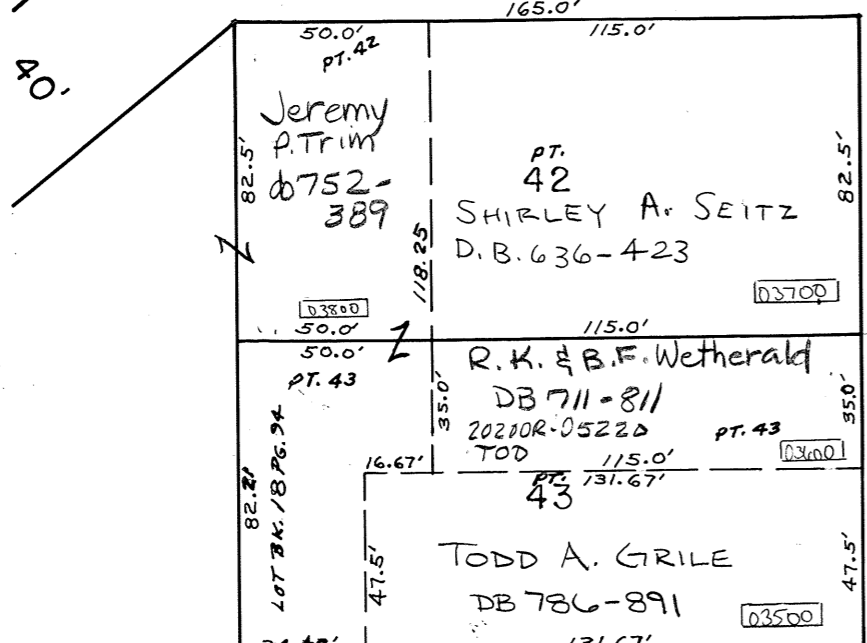
N68
PLAT NO. 68

NOTE: CURRENT DEEDS FOR INLOTS 39 AND 46 CREATE A GAP AND AN OVERLAP IN OWNERSHIP. ORIGINAL SPLITS (D.B. 23-210, D.B. 29-557) CALLED FOR 28.25 FEET OFF THE SOUTH SIDE OF INLOT 39 AND 10.5 FEET OFF THE NORTH SIDE OF INLOT 46, AND THE DESCRIPTIONS REMAINED UNCHANGED UNTIL FEBRUARY, 1945. ANNA LEHMAN ACQUIRED TITLE TO THE ABOVE DESCRIBED LAND BY D.B. 194-534. HOWEVER, A CERTIFICATE OF TRANSFER FROM ANNA LEHMAN TO JOHN LEHMAN (D.B. 243-444) DESCRIBES 26.5 FEET (IL 39) AND 12.5 FEET (IL 46), APPARENTLY BASED ON ERRONEOUS INFORMATION FROM THE AUDITOR'S TAX DUPLICATE.

SCALE: 1" = 50'
D.B. 11-58 (REC. BK. 1-161)

SMDA NUMBER
L39-NH068 - - - - -

Andy Smith 9-7-94
MIAMI COUNTY MAP DEP'T.



WASHINGTON STREET

24 1/2'

16 1/2'