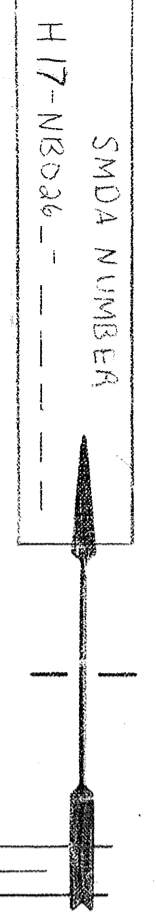
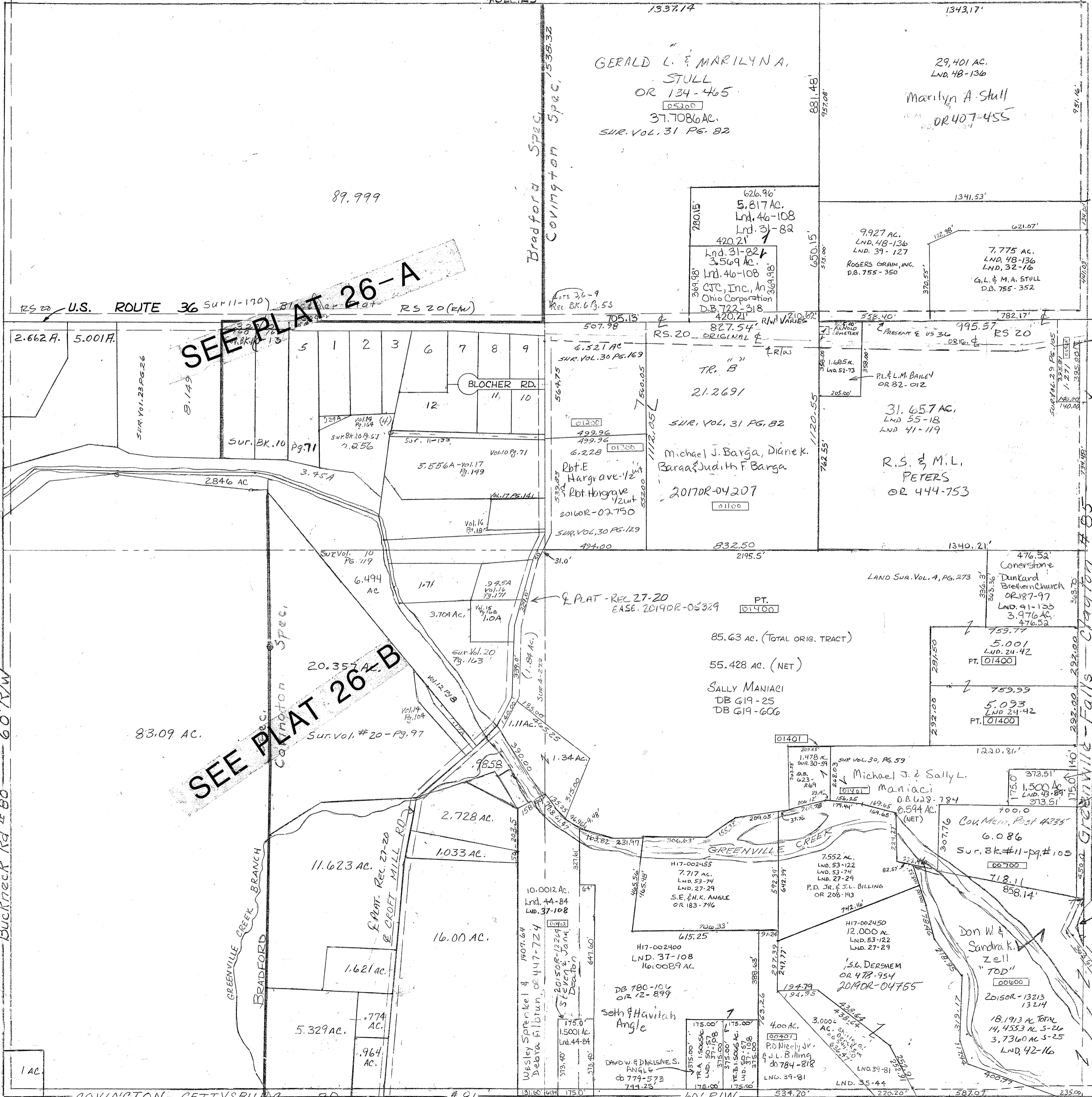


Lnd. 42-101 SE Cor SE Qtr.  
Lnd. 43-89 E. Cor. Pt. SE Qtr.  
Lnd. 44-84 SE Cor SW Qtr. &  
SW Cor SE Qtr.  
Lnd. 46-108 NW Pt NE Qtr.

Vol. 16 Pg. 171 N.E. Cor. S.W.  
Vol. 16 Pg. 180 S.E. Cor. N.W. & E. Cor. S.W.  
Vol. 17 Pg. 121 S. Pt. S.W.  
Vol. 17 Pg. 171 S.E. Cor. N.W.  
Vol. 17 Pg. 199 S.E. Pt. N.W.  
Vol. 18 Pg. 119 S.E. Cor. S.W.  
LND. 41-133 NE Cor SE Qtr.  
LND. 42-10 SE Cor SE Qtr.  
AS. SEC. 27

Vol. 11 - Pg. 105 - E. Cor. Pt. SE  
133 - E. Cor. Pt. NW  
140 - E. Cor. Pt. NW  
50 - S.E. Pt. NW  
8 - E. Cor. Pt. S.W.  
9 - E. Cor. Pt. S.W.  
14 - E. Cor. Pt. S.W.  
14 - S. Cor. Pt. NW  
15 - B. Locher Plat. S. Pt. NW  
119 - E. Cor. Pt. NW

Vol. 1 page 245 - (Whole)  
Vol. 4 page 273 N 1/2 SE  
13 - S. Cor. Pt. NW  
67 - S. Cor. Pt. NW  
71 - S. Pt. NW  
15 - B. Locher Plat. S. Pt. NW  
119 - E. Cor. Pt. NW



SMDA NUMBER  
Joseph C. Rogers  
D.B. 152-75  
RECORD OF WIRTH  
GREENVILLE FALLS  
Covington  
Jacqueline A. Truice  
etaliam (CE)  
DK 262-722  
LND 42-14  
LND 42-101  
LND 47-173  
FOR OWNER -  
SEE SEC. 25  
RD. REC. 9-26  
REL. 24-13