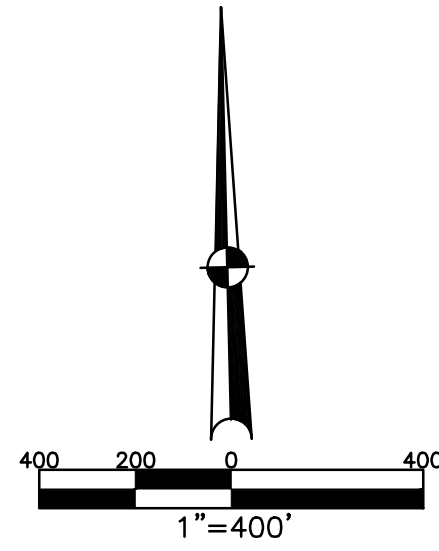


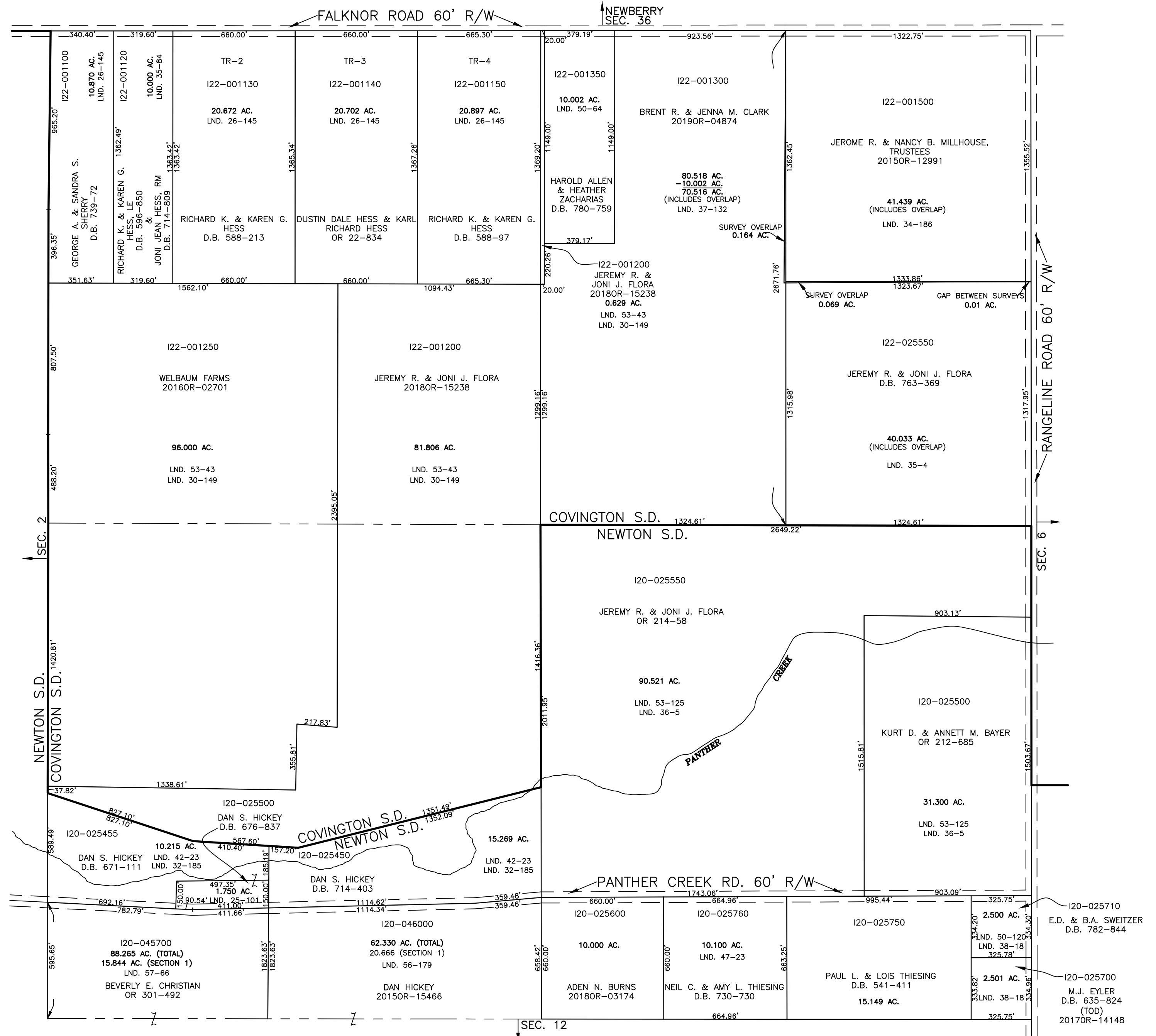
NEWTON TWP.
MIAMI COUNTY, OHIO

SECTION 1 TOWN 8 RANGE 4

PLAT 1



ABBREVIATION LEGEND	
20140R-07759	= RECORDER'S DOCUMENT NUMBER
OR 257-619	= OFFICIAL RECORD 257 PAGE 619
D.B. 613-172	= DEED BOOK 613, PAGE 172
REC. 15-72	= RECORDER'S PLAT BOOK 15, PAGE 72
LND. 33-15	= LAND SURVEY VOLUME 33, PAGE 15
LOT 19-12	= LOT SURVEY VOLUME 19, PAGE 12
R.R. 8-29	= ROAD RECORD VOLUME 8, PAGE 29
R/W	= RIGHT OF WAY
C	= CENTERLINE
AC.	= ACRES
TWP.	= TOWNSHIP
TR.	= TRACT
②	= LOT CREATED BY RECORDER'S PLAT
LINE LEGEND	
	Blow-up Boundary
	Property Line
	Lot Split Line
	Section Line
	Centerline
	Right-of-Way Line
	Corporation Line
SURVEY INDEX	
NORTHEAST QUARTER	
LND. 3-245	
LND. 30-149	
LND. 34-186	
LND. 35-4	
LND. 37-132	
LND. 50-64	
LND. 53-43	
SOUTHEAST QUARTER	
LND. 36-5	
LND. 38-18	
LND. 47-23	
LND. 50-120	
LND. 53-125	
SOUTHWEST QUARTER	
LND. 25-101	
LND. 32-185	
LND. 42-23	
LND. 56-179	
LND. 57-66	
NORTHWEST QUARTER	
LND. 26-145	
LND. 30-149	
LND. 35-84	
LND. 53-43	



PREPARED BY: MIAMI COUNTY ENGINEER'S MAP DEPARTMENT
PAUL P. HUELSKAMP, P.E., P.S., COUNTY ENGINEER
DATE: JUNE 26, 2014 MB
REVISED: May 15, 2019 DSTUMPF