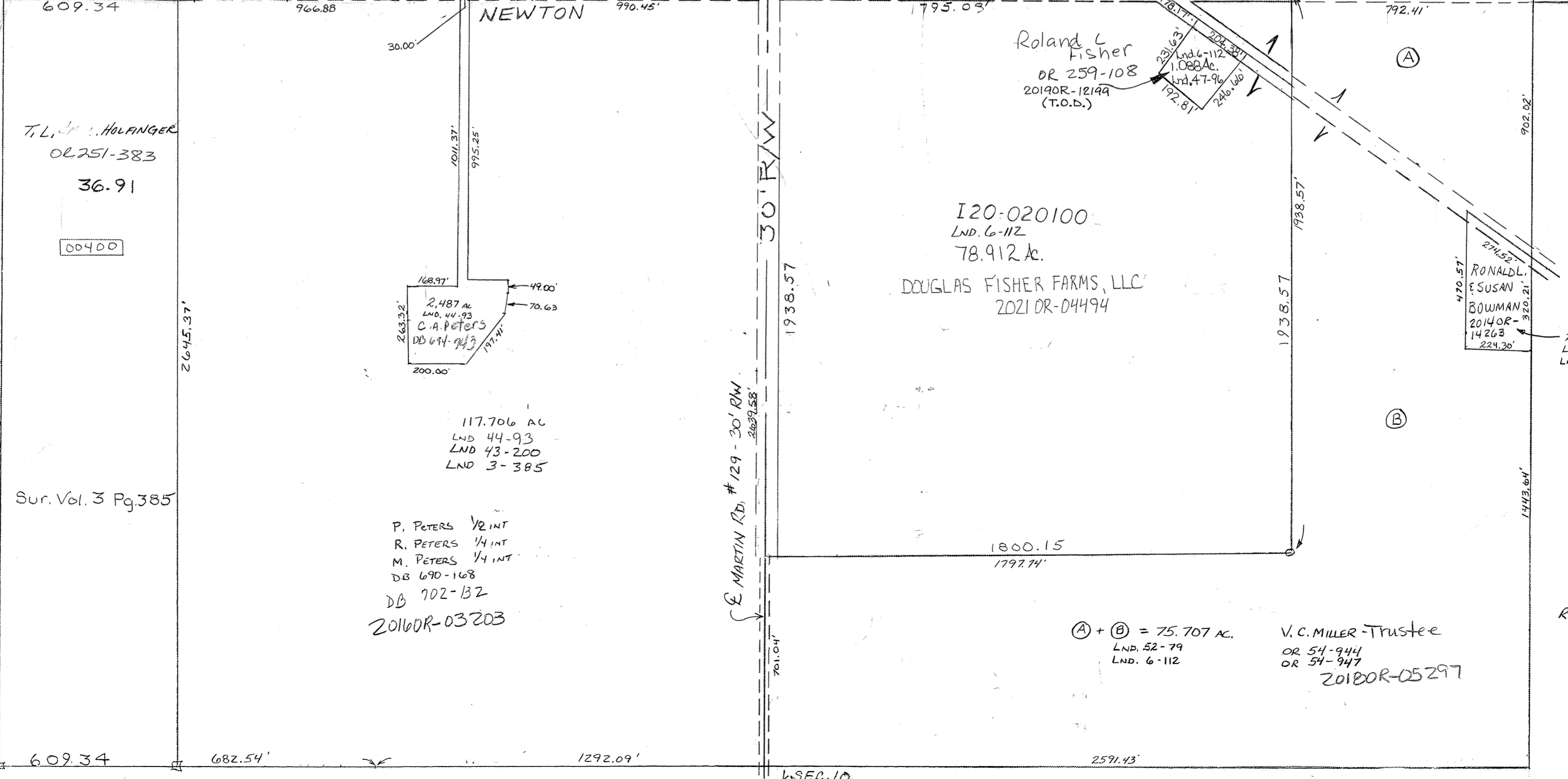
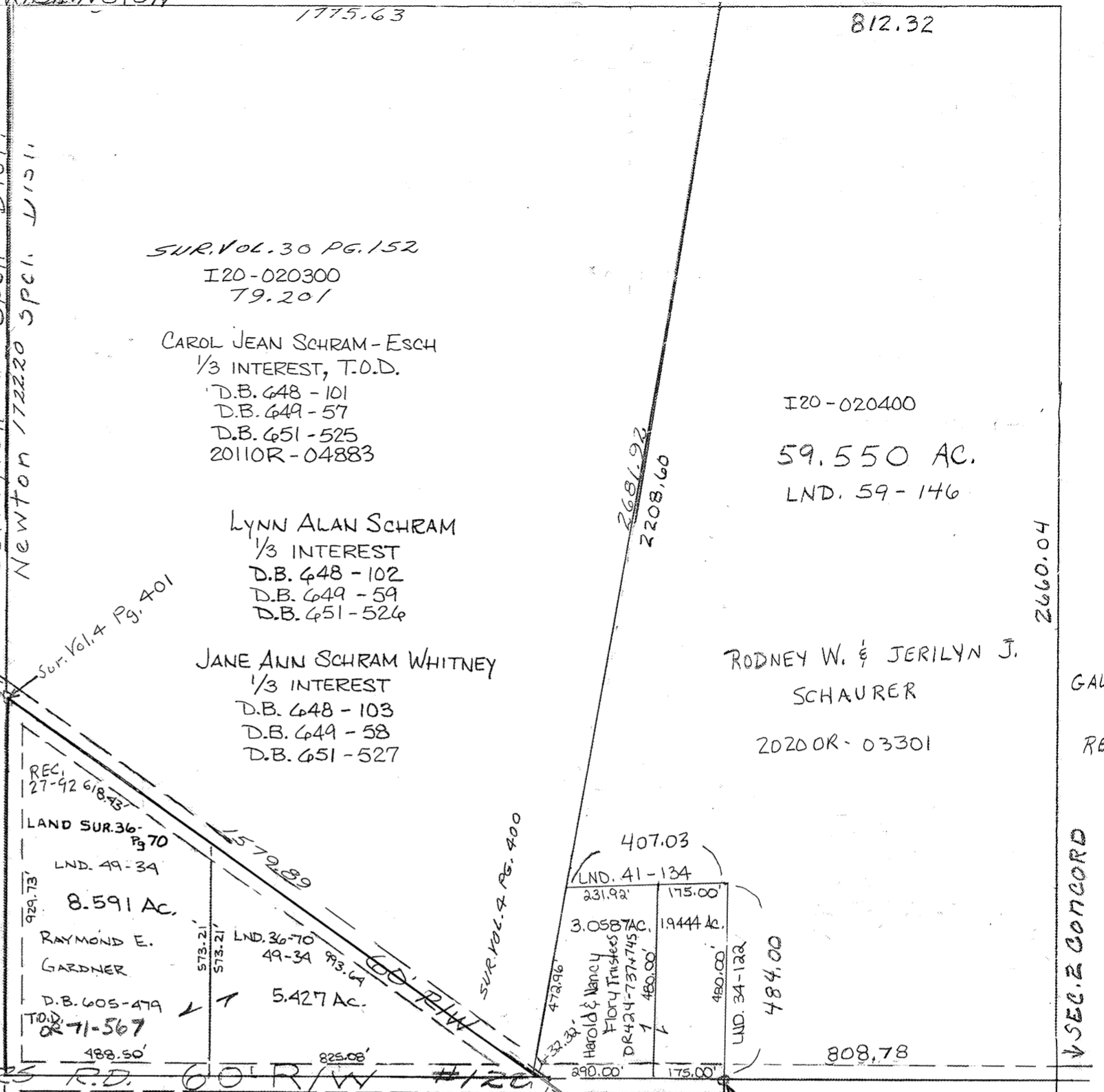
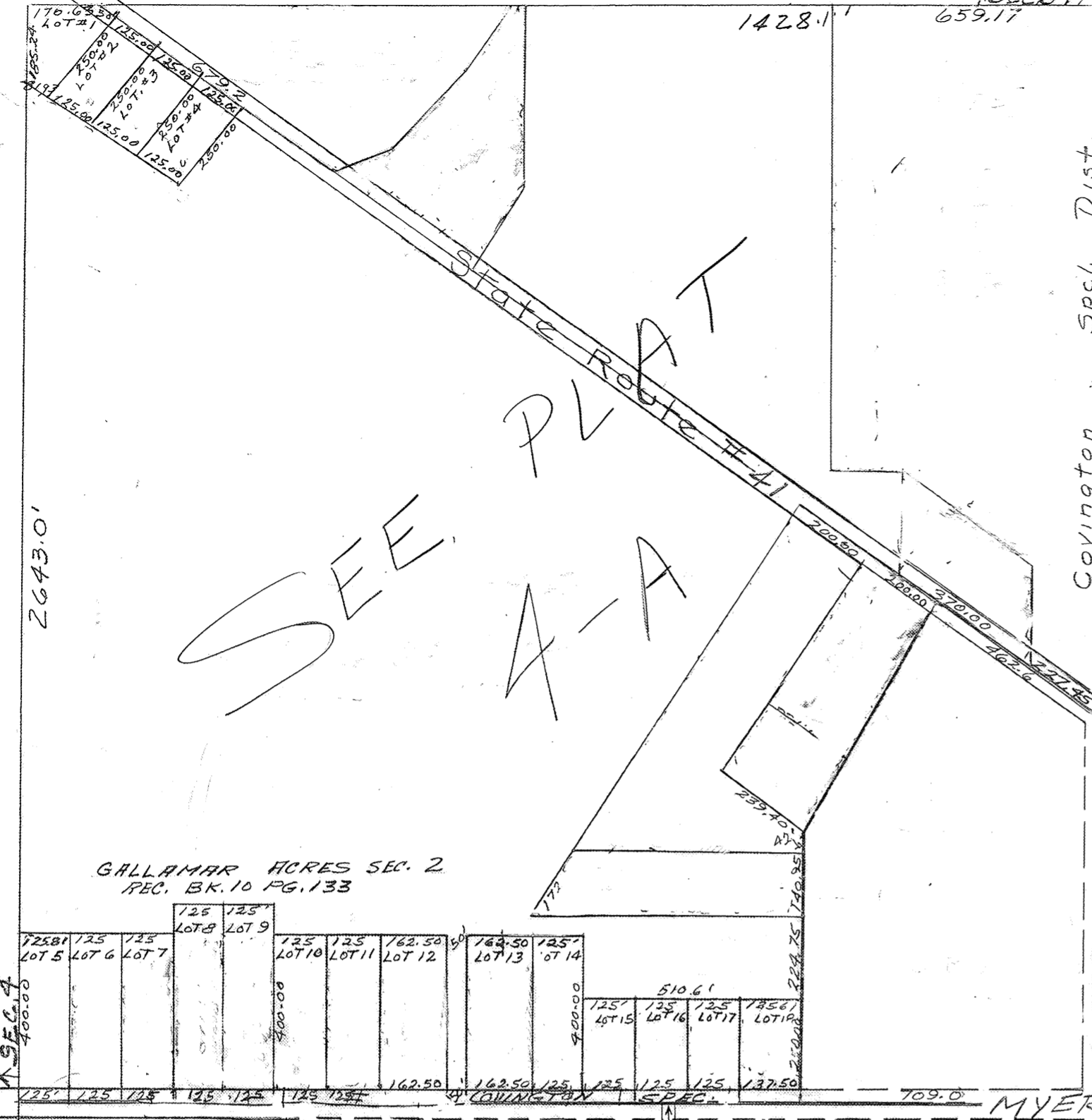


LND. 41-134 S Pt. NE QTR.  
 LND. 47-96 N. Cent SE QTR.  
 LND. 49-35 SW COR. NE QTR.  
 LND. 59-146 NE COR. NE QTR.

Surveys:  
 Pg 385 - SW Gr  
 Pg 400 - Ref to Cor Stone  
 Pg 401 - Ref to Cor Stone  
 Pg 112 - SE Gr  
 Pg 190 - N.W. pr cor

Vol. 344  
 Vol. 44  
 Vol. 6  
 Vol. 20

SEE PLAT A-A



PARCEL NUMBER  
120



REVISED 2-18-21  
MSFORMS

V.C. MILLER - Trustee  
 OR 54-944  
 OR 54-947  
 2018OR-05297

(A) + (B) = 75.707 AC.  
 LND. 52-79  
 LND. 6-112

P. PETERS 1/2 INT  
 R. PETERS 1/4 INT  
 M. PETERS 1/4 INT  
 DB 690-168  
 DB 702-132  
 2016OR-03203

117.706 AC  
 LND 44-93  
 LND 43-200  
 LND 3-385

2.487 AC  
 LND 44-93  
 C.A. PETERS  
 DB 694-923

GALLAMAR ACRES SEC. 2  
 REC. BK. 10 PG. 133

SUR. VOL. 30 PG. 152  
 I20-020300  
 T9.201

CAROL JEAN SCHRAM-ESCH  
 1/3 INTEREST, T.O.D.  
 D.B. 648-101  
 D.B. 649-57  
 D.B. 651-525  
 2011OR-04883

LYNN ALAN SCHRAM  
 1/3 INTEREST  
 D.B. 648-102  
 D.B. 649-59  
 D.B. 651-526

JANE ANN SCHRAM WHITNEY  
 1/3 INTEREST  
 D.B. 648-103  
 D.B. 649-58  
 D.B. 651-527

I20-020400  
 59.550 AC.  
 LND. 59-146

RODNEY W. & JERILYN J.  
 SCHAURER  
 2020OR-03301

GALLAMAR DITCH  
 EASEMENTS  
 REC. 27-92

I20-020100  
 LND. 6-112  
 78.912 AC.  
 DOUGLAS FISHER FARMS, LLC  
 2021OR-04494

Roland C Fisher  
 OR 259-108  
 2019OR-12199  
 (T.O.D.)

274-52  
 RONALD L.  
 ESUSAN  
 BOWMAN  
 2014OR-  
 14263  
 224.30'

2.033 AC.  
 LND. 52-79  
 LND. 6-112