

NW LND. 59-39 LND. 59-40

Lnd. 43-2 NE Pt. of SW Qtr. LND. 50-167 SW Pt. of NW Qtr. LND. 56-195 NE Pt. of SE Qtr.

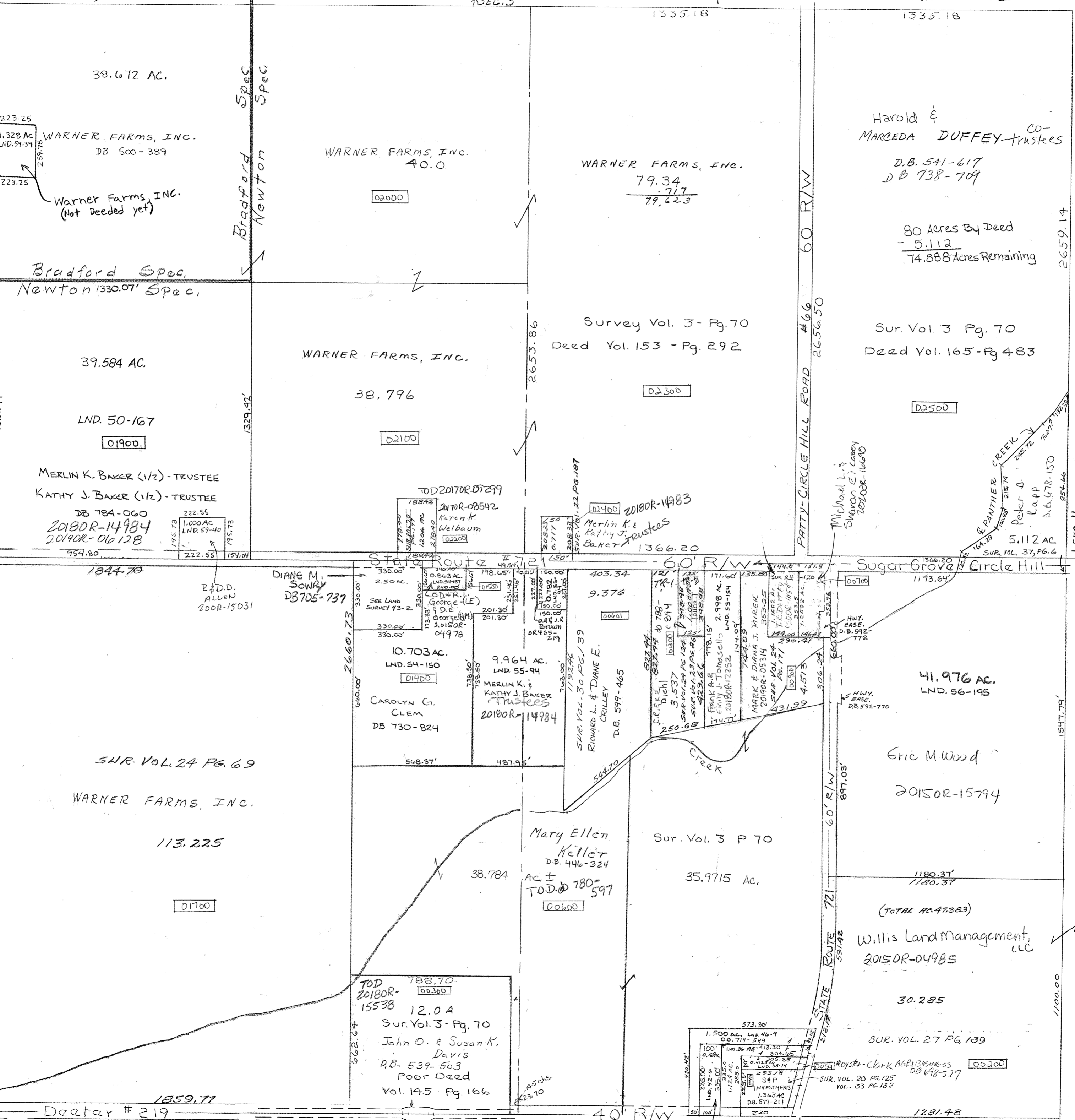
Survey = Vol. 2 Pg. 101 - whole Vol. 3 Pg. 70 - NE Qtr. NW Pt. SE & E Pt. SW Vol. 20 Pg. 125 S. Cen. SE Qtr. Vol. 37, Pg. 6 - NE 1/4 Lnd. 42-6 S. Cen. Pt. S.E. Qtr.

See Road Record BK 8 Pg 70 - Deater Road

60' R/W

ADARKE COUNTY State Route # 721 1327.49'

2664.74'



SMDA NUMBER I 20-N-T-012



1/2 SEC. 11