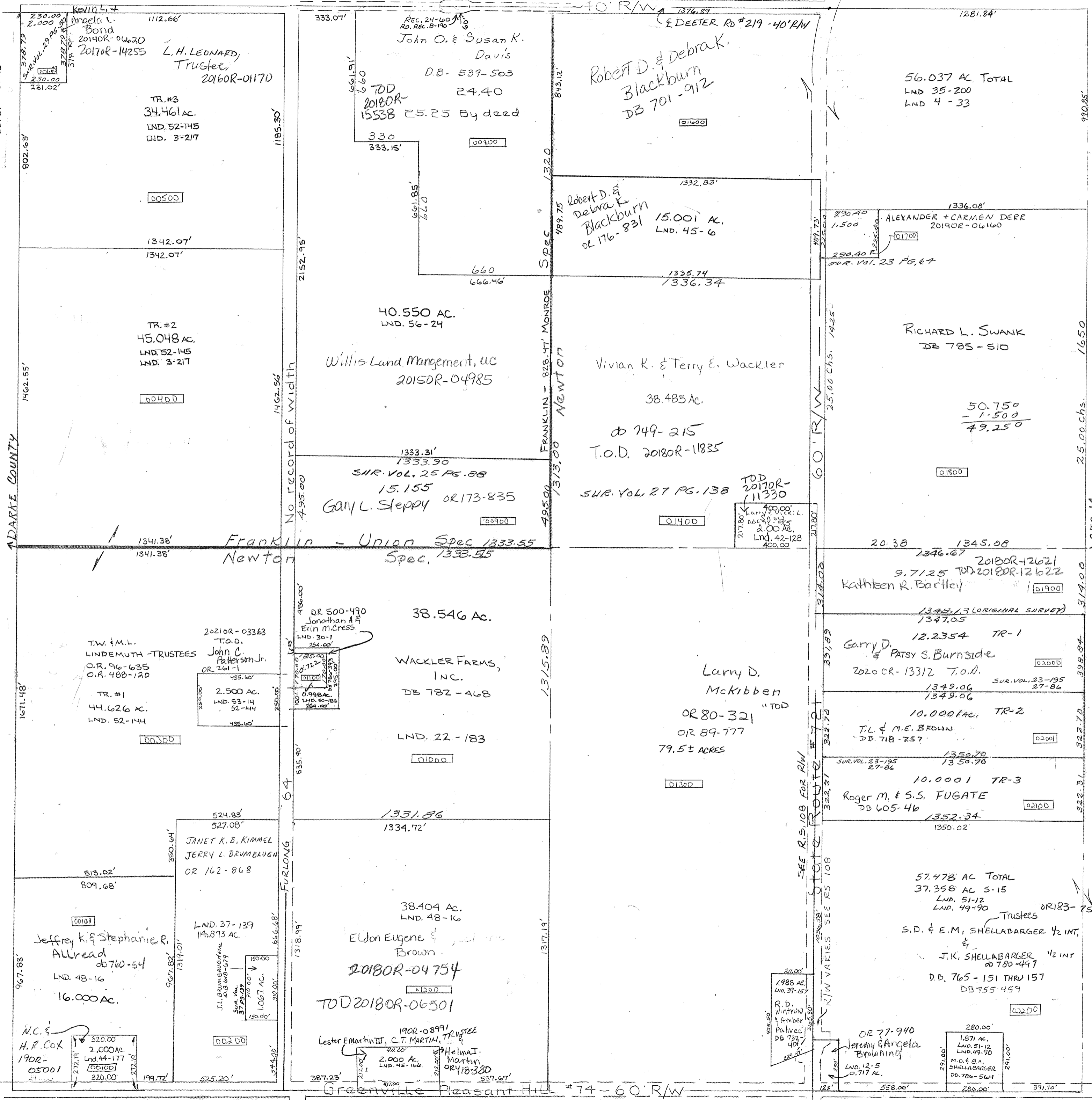


See Road Record BK 8 P 70 Decker Road

Surveys Vol. 2 Pg. 179 - Whole Vol. 3 Pg. 217 - W 1/2 NW Vol. 4 Pg. 33 - NE 1/4 NE 1/4 5 - SCENP 15E Lnd. 42-128 S. Con. Pt. NE Qtr.



SMDA NUMBER 130-N-1017



REVISED: 10-23-14 KM