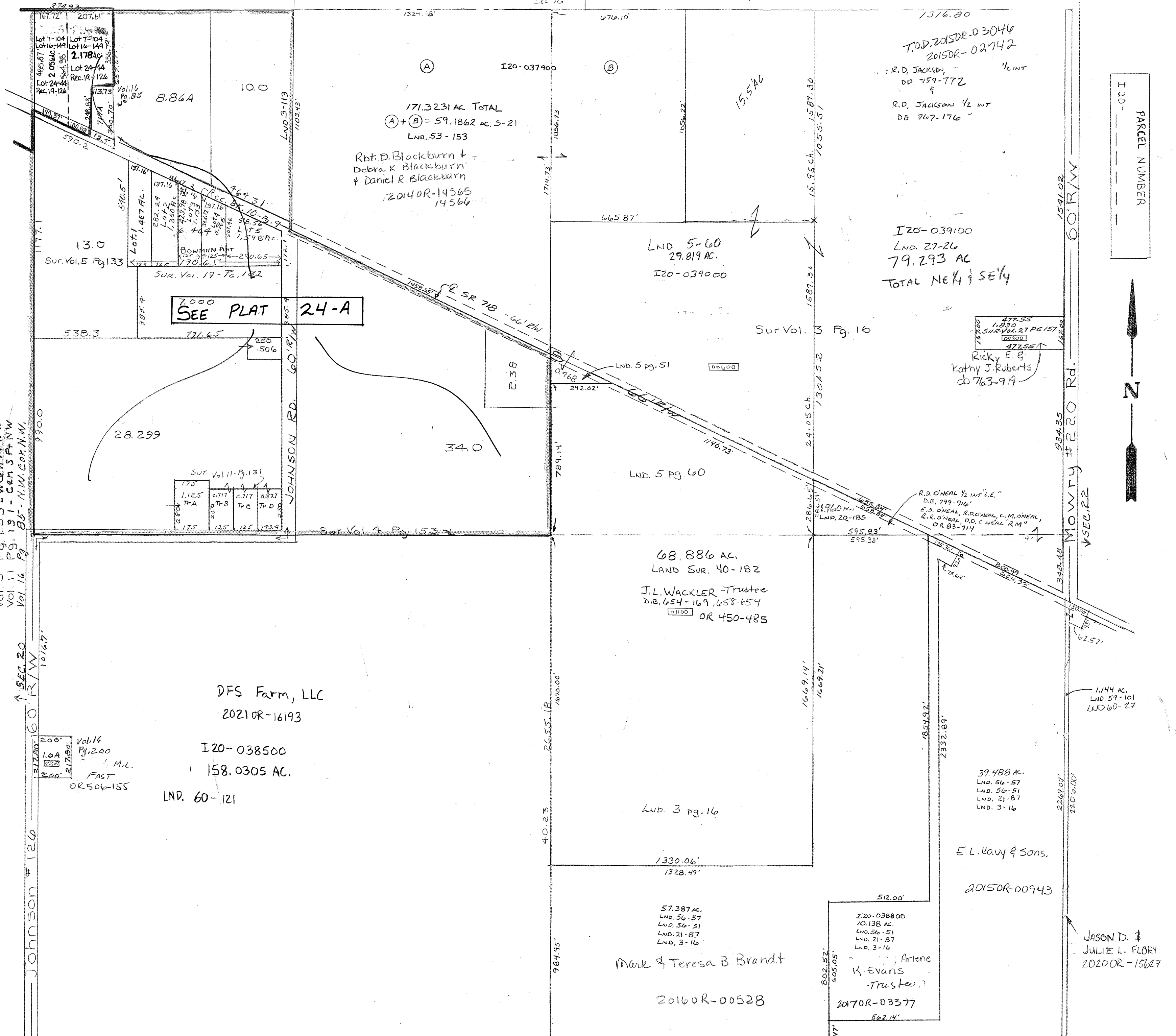


Vol. 16 Pg. 200 - W. Pt. S.W.
LND 60-27 SE PT SE
LND 60-121 SW 1/4

Surveys -
Pg. 16 - 1/2 sec Johnson Rd
Pg. 113 - Johnson Rd
Pg. 153 - 1/2 sec lines
Vol. 3 Pg. 45 - W. Cen Pt. NE
Vol. 5 Pg. 55 - W. Cen Pt. E 1/2
Vol. 11 Pg. 133 - W. Cen Pt. NW
Vol. 16 Pg. 131 - Cen S Pt. NW
Vol. 16 Pg. 85 - N.W. Corn NW

Lot Bk. 7 Pg. 107 N.W. Pt. NW
Lot 24-44 NW Cor NW Qtr.
Lot 16-149 NW Cor NW Qtr.



7000
SEE PLAT 24-A

DFS Farm, LLC
2021OR-16193
I20-038500
158.0305 AC.
LND. 60-121

171.3231 AC TOTAL
(A) + (B) = 59.1862 ac. S-21
LND. 53-153
Rbt. D. Blackburn +
Debra K. Blackburn +
Daniel R. Blackburn
2014OR-14565
14566

68.886 AC.
LAND SUR. 40-182
J.L. WACKLER Trustee
D.B. 654-169, 658-654
OR 450-485

Mark & Teresa B. Brandt
2016OR-00528

T.O.D. 205DR-03044
2015DR-02742
R.D. JACKSON, 1/2 INT
DP 759-772
R.D. JACKSON 1/2 INT
DB 767-176

I20-039100
LND. 27-26
79.293 AC
TOTAL NE 1/4 SE 1/4

477.55
1.830
SHR/VOL. 27 PG 157
477.55
Ricky E. G.
Kathy J. Roberts
db 763-919

R.D. O'NEAL 1/2 INT 'L.E.'
D.B. 799-916
E.S. O'NEAL, R.D. O'NEAL, C.M. O'NEAL,
R.R. O'NEAL, D.D. O'NEAL 'R.M.'
OR 83-711

39.488 AC.
LND. 56-57
LND. 56-51
LND. 21-87
LND. 3-16

E.L. Navy & Sons,
2015OR-00943

I20-038800
70.138 AC.
LND. 56-51
LND. 21-87
LND. 3-16
Arlene
K. Evans
Trustee
2017OR-03377
562.14'

JASON D. &
JULIE L. FLORY
2020OR-15627

PARCEL NUMBER

