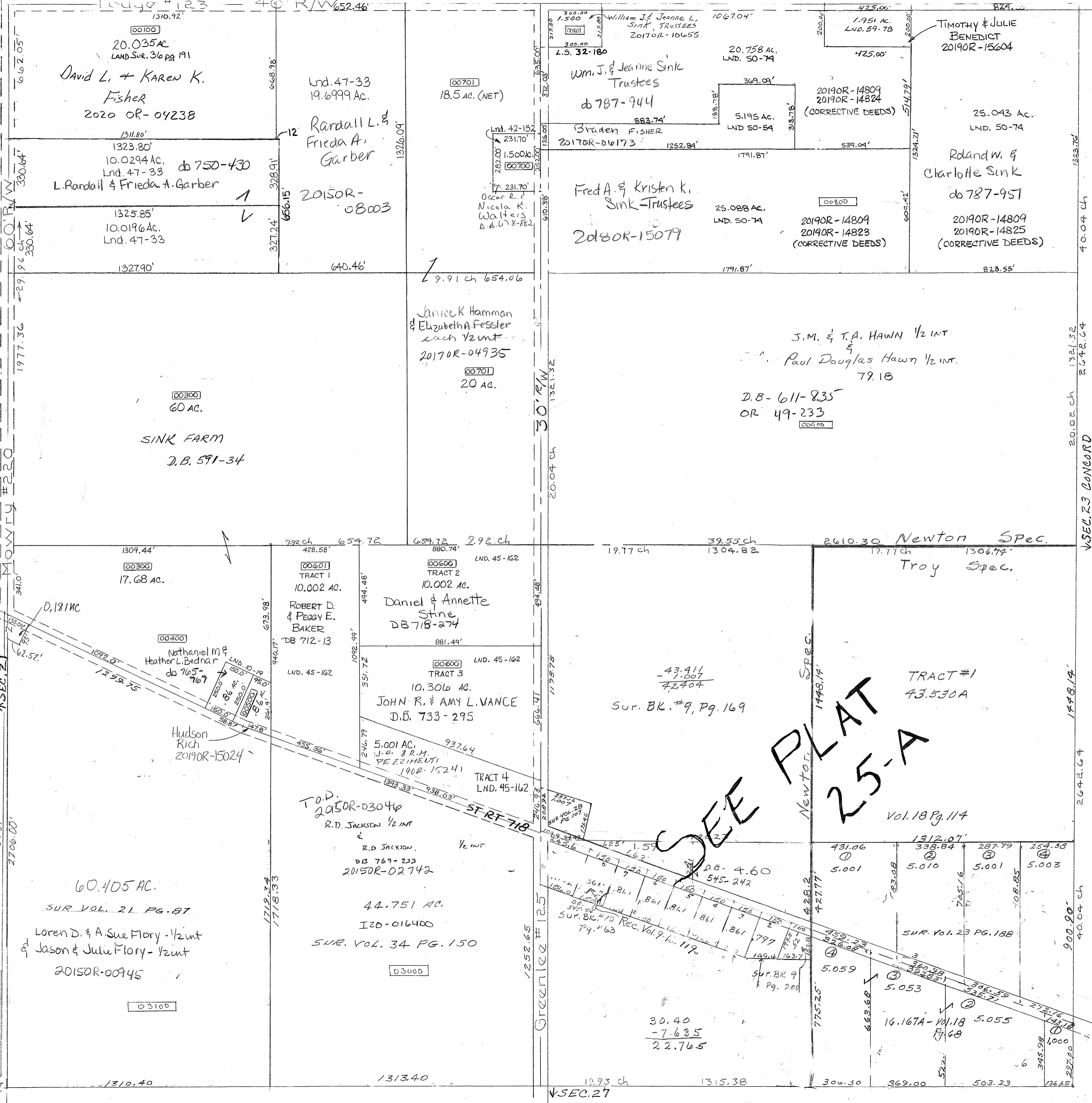


Lodge #123 - 40 R/W 652.46

Surveys -
Vol. 3 Pg. 17 Whole Section
Vol. 9 Pg. 169 - NW Pt SE
Vol. 9 Pg. 200 - Cen S Pt SE
Vol. 10 Pg. 19 - Cen N Pt SW
Vol. 10 Pg. 63 - Cen W Pt SE
Vol. 19 Pg. 88 S.E. 1/4 SE
Vol. 18 Pg. 114 E. Pt SE
Lnd. 42-152 NE Pt NW Qtr
Lnd. 47-33 NW Pt NW Qtr
Lnd. 60-27 NW Pt SW Qtr



00100
20.035 AC
LAND SUR. 36 PG 191
David L. & Karen K. Fisher
2020 OR-04238

1311.80'
1323.80'
10.0294 AC
Lnd. 47-33
L. Randall & Frieda A. Garber
do 750-430

1325.85'
10.0196 AC
Lnd. 47-33

1327.90'

00300
60 AC.
SINK FARM
D.B. 591-34

1309.44'
00300
17.68 AC.

00400
Nathaniel M & Heather L. Bednar
do 765-767

Hudson Rich
2019OR-15024

60.405 AC.
SUR VOL. 21 PG. 87
Loren D. & A. Sue Flory - 1/2 int
Jason & Julie Flory - 1/2 int
2015OR-00945

Lnd. 47-33
19.6999 AC.

00701
18.5 AC. (NET)
Randall L. & Frieda A. Garber
2015OR-08003

Janice K Hamman & Elizabeth A. Fessler
each 1/2 int
2017OR-04935

00701
20 AC.

00601
TRACT 1
10.002 AC.
ROBERT D. & PEABY E. BAKER
DB 712-13

Daniel & Annette Stine
DB 718-274

00600
TRACT 3
10.306 AC.
JOHN R. & AMY L. VANCE
D.B. 733-295

T.O.D. 2015OR-03044
R.D. JACKSON 1/2 int
&
R.D. JACKSON, 1/2 int
DB 769-233
2015OR-02742

44.751 AC.
I20-016400
SUR. VOL. 34 PG. 150

03000

William J. & Jeanne L. Sink, TRUSTEES
2017OR-10655
Wm. J. & Jeanne Sink Trustees
do 787-944

Graden FISHER
2017OR-06173

Fred A. & Kristen K. Sink - Trustees
2018OR-15079

20.758 AC.
LND. 50-74

5.195 AC.
LND 50-54

25.088 AC.
LND. 50-74

00800
2019OR-14809
2019OR-14823
(CORRECTIVE DEEDS)

J.M. & T.A. HAWN 1/2 int
&
Paul Douglas Hawn 1/2 int.
79.18
D.B-611-835
OR 49-233
00900

TIMOTHY & JULIE BENEDICT
2019OR-15604

25.043 AC.
LND. 50-74

Roland W. & Charlotte Sink
do 787-951
2019OR-14809
2019OR-14825
(CORRECTIVE DEEDS)

2610.30 Newton Spec.
Troy Spec.

TRACT #1
43.530A

Vol. 18 Pg. 114

5.001
5.010
5.001
5.003

5.059
5.053
14.167A-Vol. 18 Pg. 68
5.055

SEE PLAT 25-A

PLAT NUMBER
I 20-N 025

SEC. 23 CONCORD

1498.14'

900.90'

REVISED 12-31-20
IMG