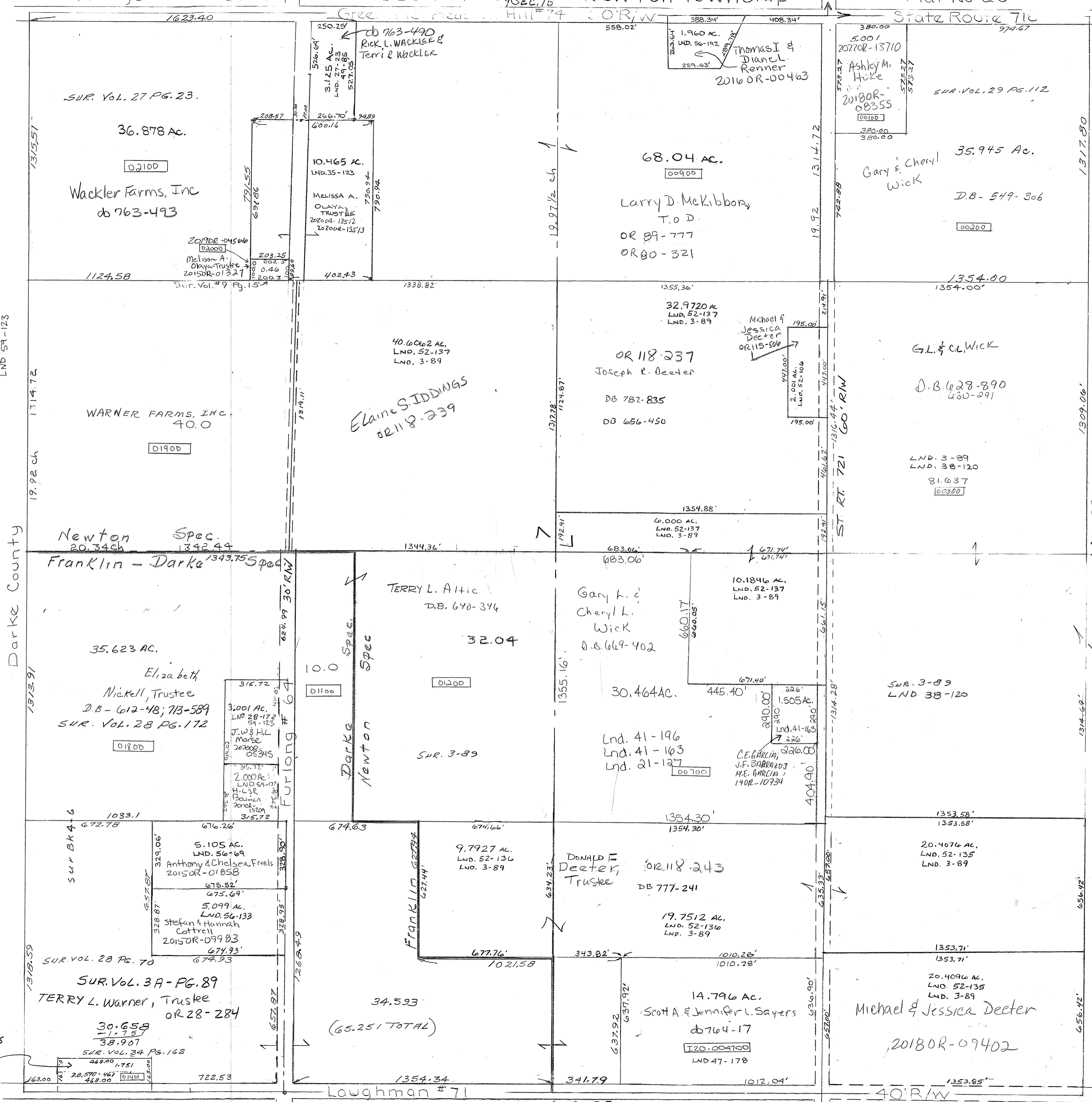
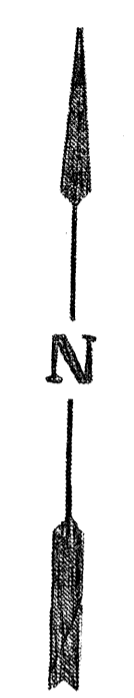


Lnd. 41-163 - NW Cor. SE Qtr.
 Lnd. 41-196 - NW Cor. SE Qtr.
 Lnd. 49-85 - Cen. Pt. NW Qtr.
 Lnd. 56-69 - SW Pt. SW Qtr.
 Lnd. 56-189 - NW Pt. NE Qtr.
 Lnd. 59-123

SURVEYS +
 Vol. 3 Pg. 89 Whole
 Vol. 4 Pg. 6 - W Pt. W 1/2
 Vol. 9 Pg. 15 - Cen. Pt. NW
 Vol. 38 Pg. 120 PARTS N.E. 1/4 SE QUARTERS
 Vol. 47 Pg. 178 S Pt SE QUARTERS



SMDA NUMBER



REVISED: 9-18-22 JA