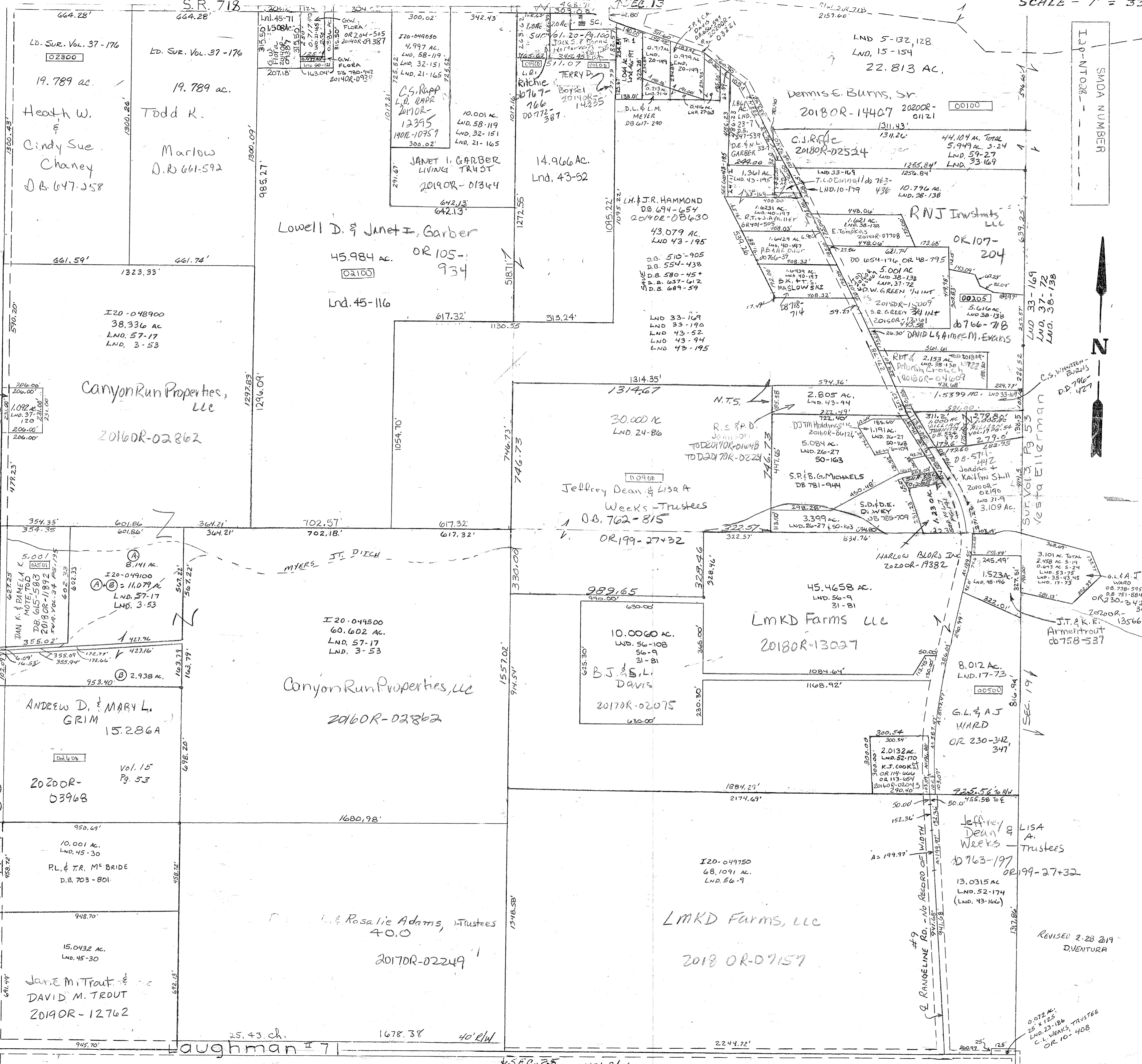


SURVEYS Vol. 7 Pg. 141-SEPT NE Lnd. 43-52 SE Pt NW QTR. & SW Pt. N. QTR. Vol. 10 Pg. 179-CEN N Pt NE Lnd. 43-106 SE Pt. SE. QTR. Vol. 15 Pg. 154-NE. QTR. N.E. Lnd. 45-71 NE Pt. NW QTR. Vol. 17 Pg. 54-SE Pt. N.E. Lnd. 45-116 E Pt. NW QTR. Vol. 17 Pg. 73-NE Pt. SE Lnd. 46-197 NW Pt. NE QTR.



SMDA NUMBER
L20-NT028



REVISED 2-28-2019
D.VENTURA

0.072 AC.
25' x 125'
LND. 23-186
C.L. WEEKS, TRUSTEE
OR 10-408