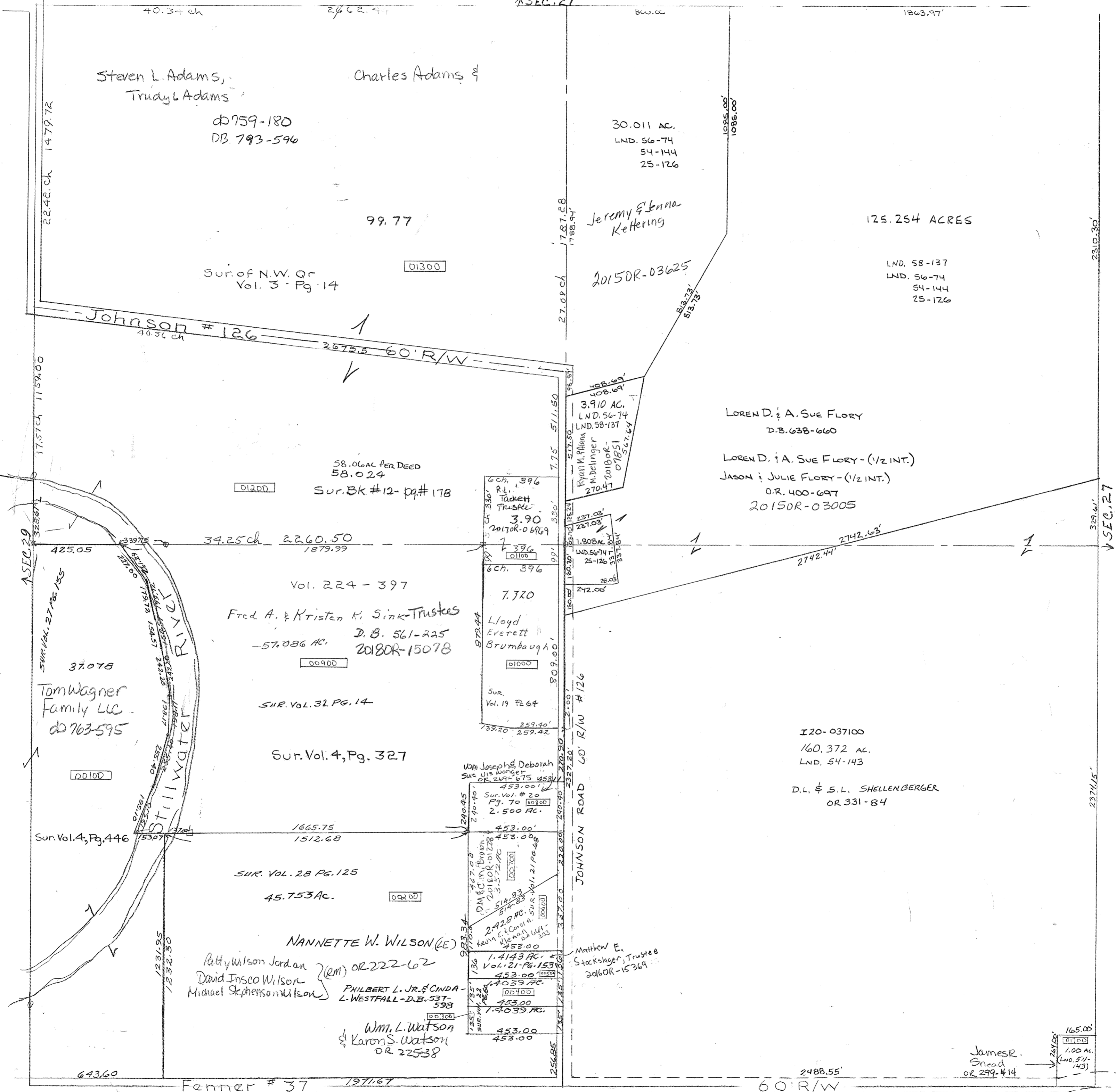


SMDA NUMBER  
I 20-NT033



SURVEYS  
14 - N PT NW  
Pg. 327 - NE P+ SW  
Pg. 446 - W P+ SW  
Pg. 178 - SE Corn W  
Vol. 34  
Vol. 44  
Vol. 12  
Vol.



Steven L. Adams,  
Trudy L. Adams

d 759-180  
DB 793-596

Charles Adams &

99.77

Sur. of N.W. Qr  
Vol. 3 - Pg. 14

01300

30.011 AC.  
LND. 56-74  
54-144  
25-126

Jeremy & Jenna  
Kettering

20150R-03625

125.254 ACRES

LND. 58-137  
LND. 56-74  
54-144  
25-126

Johnson # 126  
40.56 ch

2673.5 60' R/W

LOREN D. & A. SUE FLORY  
D.B. 638-660

LOREN D. & A. SUE FLORY - (1/2 INT.)

JASON & JULIE FLORY - (1/2 INT.)  
O.R. 400-697  
20150R-03005

58.06 AC PER DEED  
58.024  
Sur. Bk #12 - pg. # 178

01200

6 ch. 396  
R.L. Tackett  
Trustee  
3.90  
20170R-06969

Lloyd  
Everett  
Brumbaugh  
Sur.  
Vol. 19 Pg. 64

01000

Fred A. & Kristen K. Sink - Trustees  
- 57.086 AC.  
D.B. 561-225  
20180R-15078

00900

SUR. VOL. 32 PG. 14

Sur. Vol. 4, Pg. 327

Tom Wagner  
Family LLC  
d 763-595

00100

I 20-037100  
160.372 AC.  
LND. 54-143

D.L. & S.L. SHELLENBERGER  
OR 331-84

SUR. VOL. 28 PG. 125  
45.753 AC.

00200

NANNETTE W. WILSON (LE)

Ratty Wilson Jordan (RM) OR 222-62  
David Inasco Wilson  
Michael Stephenson Wilson

PHILBERT L. JR. & CINDA  
L. WESTFALL - D.B. 537-  
598

00300

Wm. L. Watson  
& Karon S. Watson  
OR 225-38

Matthew E.  
Stacksinger, Trustee  
2060R-15369

James R.  
Sneed  
OR 299-414

165.00  
1.00 AC.  
LND. 54-  
143

REVISED: 6-11-2018 DGS

REVISED: 3/17/15  
AM

Fenner # 37 1971.67

2488.55' 60' R/W

SEC. 33