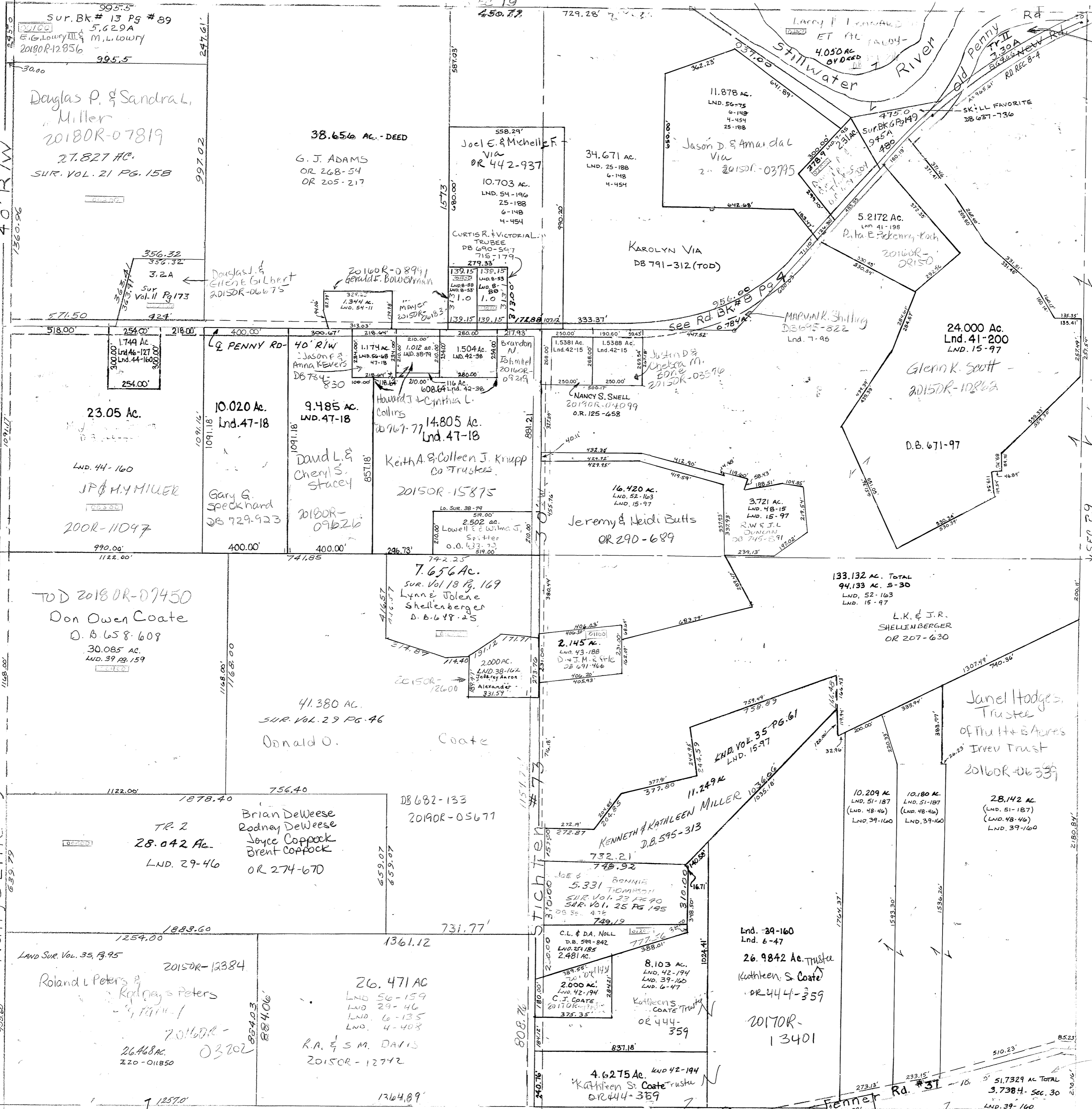
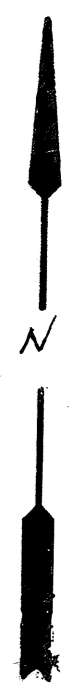


LAND 38-162
Lnd. 46-127
Lnd. 47-18
Lnd. 48-15
Lnd. 48-146
LND. 54-146
LND. 56-68
LND. 56-75
Vol. 8 Pg. 53-E Cen. Pt. NW
Vol. 8 Pg. 58-E Cen. Pt. NW
Vol. 8 Pg. 64-Penny Rd
Vol. 10 Pg. 26-S Cen. Pt. SE
Vol. 11 Pg. 173-W Cen. Pt. NW
Vol. 13 Pg. 89-N.W. Cor. NW
Vol. 15 Pg. 97-S. Pt. NE. W. P. SE.
Vol. 18 Pg. 127 N.E. Cor. SW Gr.
Pg. 47-S.W. Pt. SE
Pg. 135-S.E. Pt. SW
Pg. 143-Cen. Pt. NW
Pg. 149-Cen. Pt. NE
Pg. 95-Cen. Pt. NE
Vol. 6 Pg. 47-S.W. Pt. SE
Vol. 4 Pg. 143-Cen. Pt. NW
Vol. 6 Pg. 149-Cen. Pt. NE
Vol. 7 Pg. 95-Cen. Pt. NE
SPT 1/2 Sec. Line
N.W. Pt. SW
W. Pt. SE
SE Pt. SW
Cen. Pt. N 1/2
Vol. 3 Pg. 134
Vol. 3 Pg. 41
Vol. 1 Pg. 203
Vol. 1 Pg. 205
Vol. 4 Pg. 403
Vol. 4 Pg. 454
Vol. 3 Pg. 397
Lnd. 41-198 Cen. Pt. NE Qtr.
Lnd. 41-200 SE Pt. NE Qtr.
Lnd. 42-15 W. Cen. Pt. NE Qtr.
Lnd. 42-36 E. Cen. Pt. NW Qtr.
Lnd. 42-194 SW Cor. SE Qtr.
Lnd. 44-160 SW Cor. NW Qtr.



Michael D. McGriff
2020 OR-13513

CMDA NUMBER
140-WT-0.5-



11-9-2015
OR 503-336
Jack Eugene Coate & Pamela Sue Coate

51.7329 AC TOTAL
3.7384 Sec. 30
LND. 39-160
(LND. 10-26)