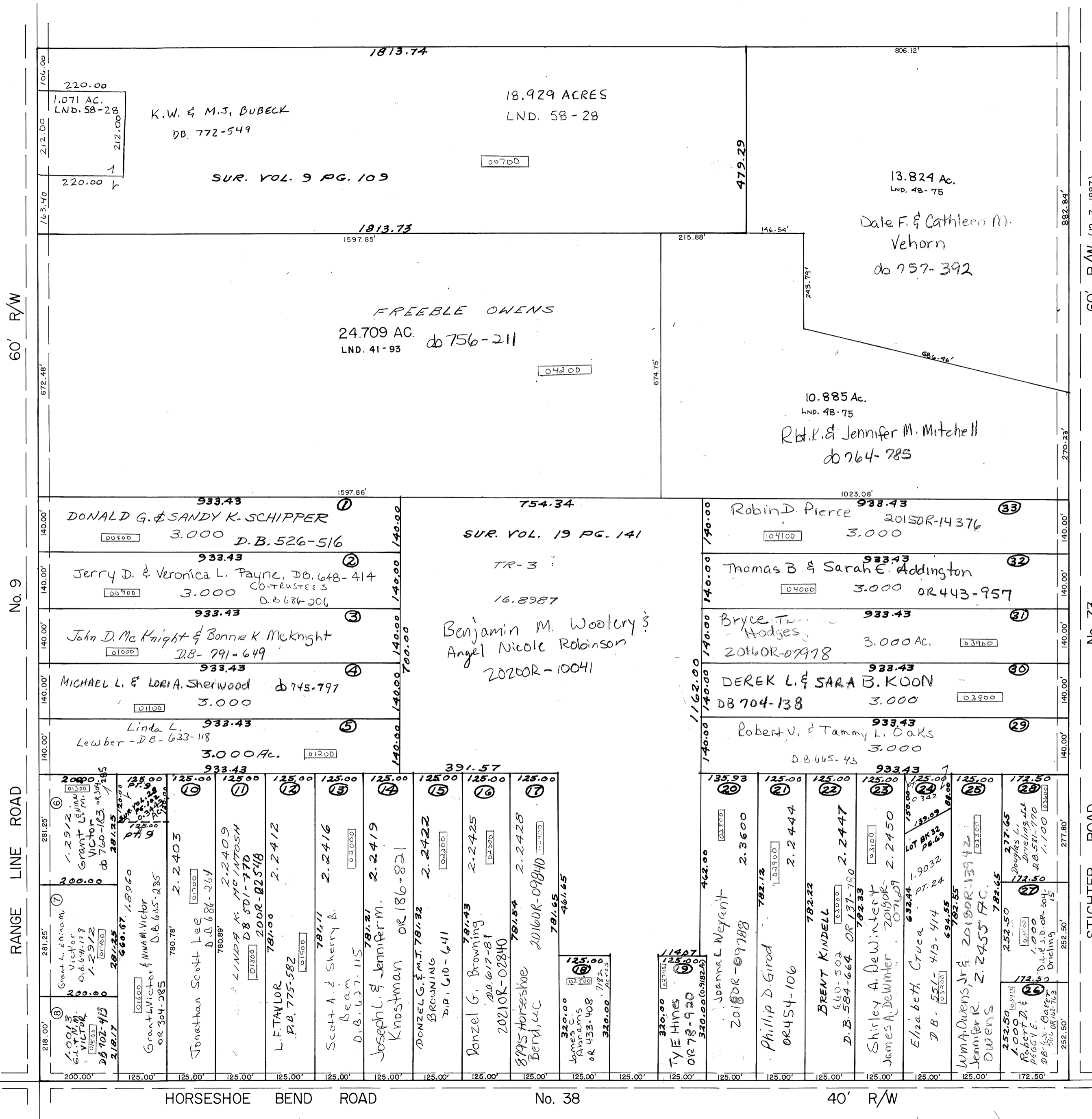


CHAR - MAR SUB., SECTION 1
LOTS 1 THRU 18
REC. BOOK 10, PAGE 122



60' R/W

No. 9

RANGE LINE ROAD

HORSESHOE BEND ROAD

No. 38

40' R/W

60' R/W (12-7-1887)

No. 73

STICHTER ROAD

(SEE COMMISSIONERS' JOURNAL 8, PAGE 437, FOR RIGHT-OF-WAY WIDTH REVISED ACCORDING TO RESEARCH BY MIAMI COUNTY MAP DEPARTMENT ON 2-27-2003.

CHAR - MAR SUB., SECTION 2
LOTS 19 THRU 33
REC. BOOK 10, PG. 123

SMCA NUMBER
I 30-NT036A- - - - -