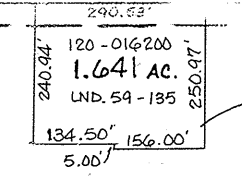
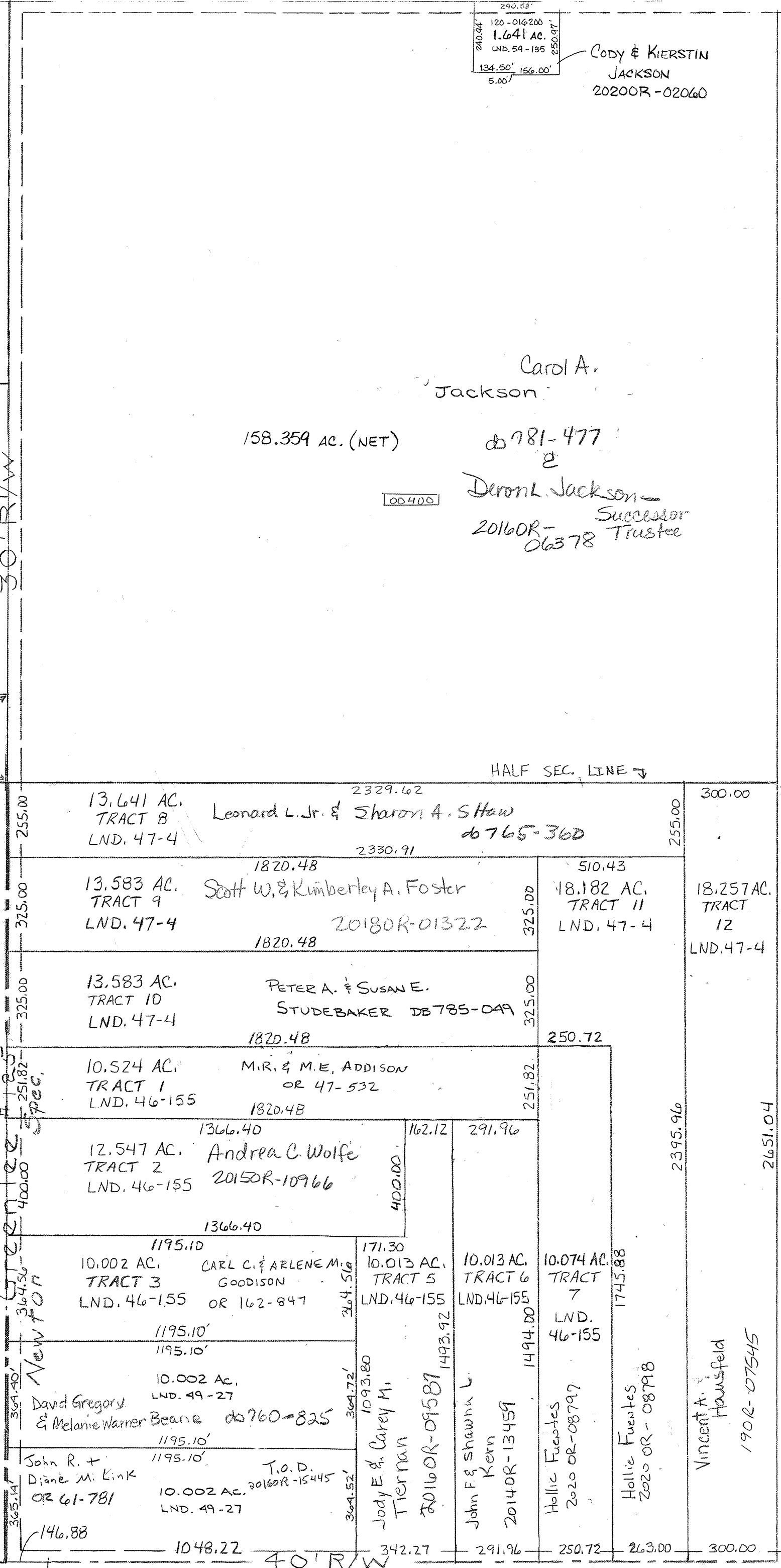
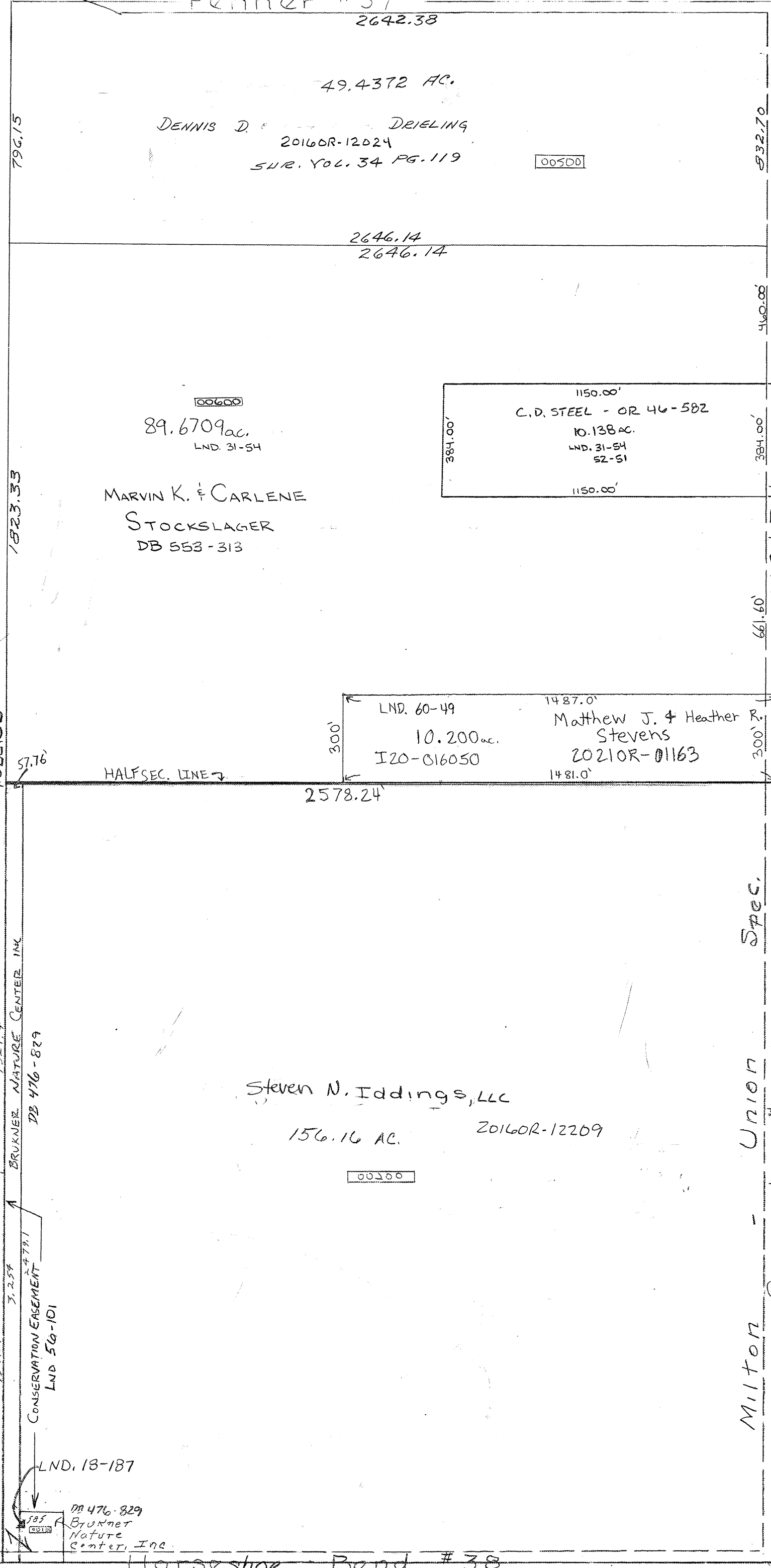


Fenner #37

1/4 SEC. 27



Cody & Kierstin Jackson 20200R-02060

SMDA NUMBER I 30-NT039

LAND SURVEYS

- 18-187
- 31-54
- 34-119
- 46-155
- 47-4
- 49-27
- 56-101
- 59-135

1/4 SEC. 33

BRUNNER NATURE CENTER INC. DB 476-829

CONSERVATION EASEMENT LND 50-101

LND. 13-187 DB 476-829 Brunner Nature Center, Inc.

Horseshoe Bend #38

Milton - Union Spec.

Newton

UNION TWP. SEC. 3

1/4 SEC. 35 CONCORD.

TRACTS 1-7 LND. 46-155 TRACTS 8-12 LND. 47-4