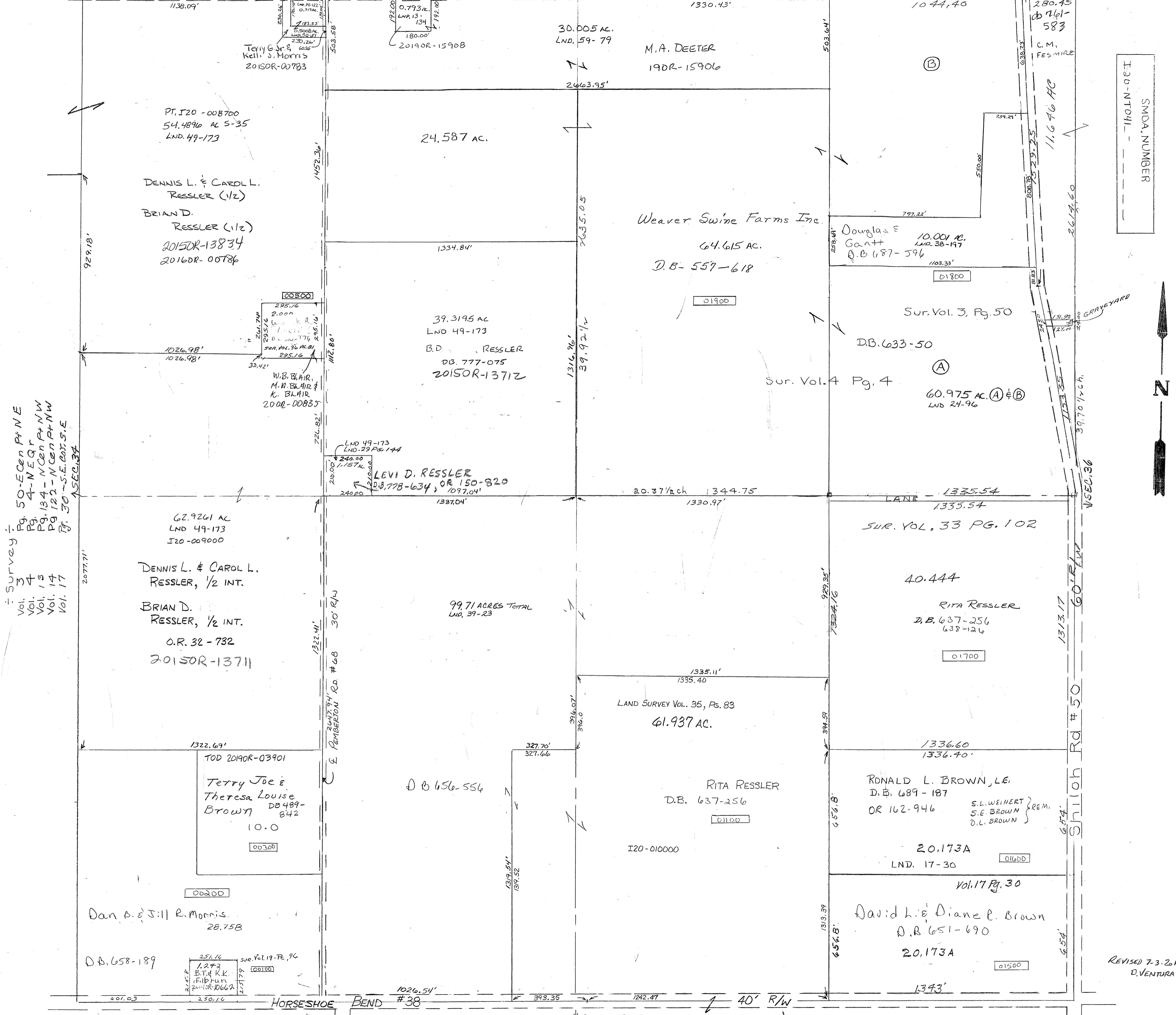


Fenner # 37

60' R/W



SMDA NUMBER  
SECTION -



Survey:  
Pg. 50 - E-Cen Pt NE  
Pg. 4 - N-E-Q-R  
Pg. 134 - N-Cen Pt NW  
Pg. 122 - N-Cen Pt NW  
Pg. 30 - S-E-Cor. S.E.

PT. I20 - 008700  
54.4896 AC S-35  
LND. 49-173

DENNIS L. & CAROL L.  
RESSLER (1/2)  
BRIAN D.  
RESSLER (1/2)  
2015OR-13834  
2016OR-00786

24.587 AC.

30.005 AC.  
LND. 59-79

M.A. DEETER  
19DR-15906

(B)

280.45  
DB 261-583  
C.M.  
FES MIRE

11.646 AC

Weaver Swine Farms Inc.

64.615 AC.  
D.B. - 557-618

Douglas E  
Cantt  
D.B. 687-596

Sur. Vol. 3, Pg. 50

DB. 633-50

(A)

60.975 AC. (A) & (B)  
LND 24-96

Sur. Vol. 4 Pg. 4

100500  
295.76  
2.000  
W.B. BLAIR  
M.H. BLAIR &  
K. BLAIR  
2000-00835

39.3195 AC  
LND 49-173

B.D. RESSLER  
DB. 777-075  
2015OR-13712

01900

01800

LND 49-173  
LND. 29 Pg. 144

LEVI D. RESSLER  
D.B. 778-634, OR 150-820  
1077.04'

20.37 1/2 ch 1344.75

LANE - 1335.54

SUR. VOL. 33 PG. 102

62.9261 AC  
LND 49-173  
I20-009000

DENNIS L. & CAROL L.  
RESSLER, 1/2 INT.

BRIAN D.  
RESSLER, 1/2 INT.

O.R. 32-732  
2015OR-13711

99.71 ACRES TOTAL  
LND. 39-23

40.444

RITA RESSLER

D.B. 637-256  
638-126

01700

LAND SURVEY VOL. 35, PG. 83

61.937 AC.

RITA RESSLER  
D.B. 637-256

01100

I20-010000

RONALD L. BROWN, LE  
D.B. 689-187  
OR 162-946

S.L. WEINERT } REM.  
S.E. BROWN }  
D.L. BROWN }

20.173A  
LND. 17-30

01600

Vol. 17 Pg. 30

David L. & Diane P. Brown  
D.B. 651-690

20.173A

01500

Dan B. & Jill R. Morris  
28.758

D.B. 658-189

251.16  
1.279  
B.T. & K.K.  
FIFTH  
2010R-0662

00100

HORSESHOE BEND #38

SECTION 2 UNION

REVISED 7-3-2019  
D. VENTURA