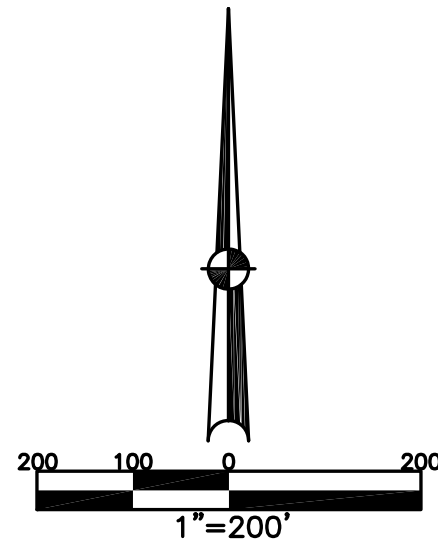


WASHINGTON TWP.
MIAMI COUNTY, OHIO

NORTHWEST PART
SECTION 7 TOWN 6 RANGE 6

PARCEL NUMBER
M40-_____

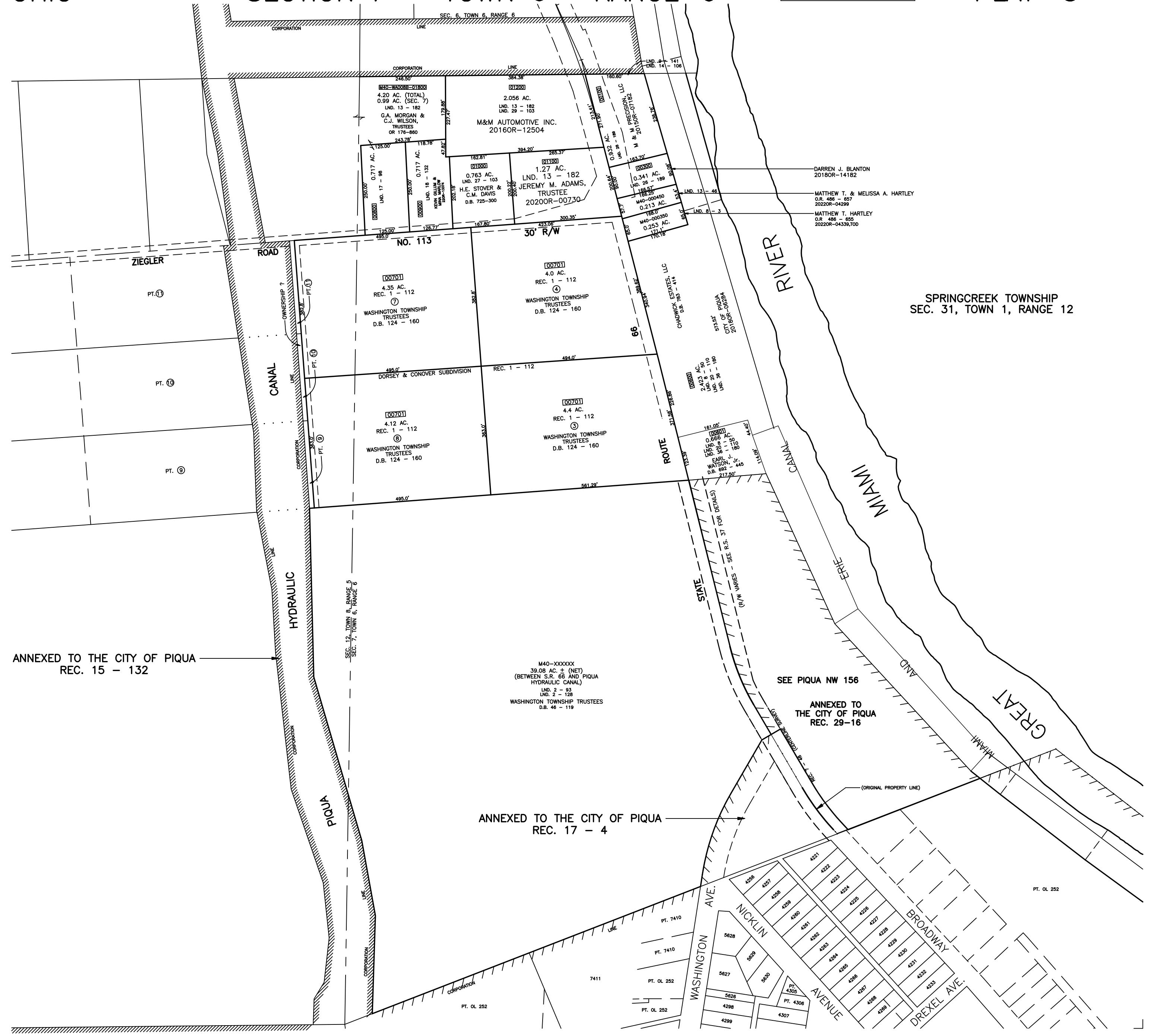
PLAT 5



ABBREVIATION LEGEND		
2014OR-07759	=	RECORDER'S DOCUMENT NUMBER
OR 406-509	=	OFFICIAL RECORD 406 PAGE 509
D.B. 613-172	=	DEED BOOK 613, PAGE 172
REC. 15-72	=	RECORDER'S PLAT BOOK 15, PAGE 72
LND. 33-15	=	LAND SURVEY VOLUME 33, PAGE 15
LOT 19-12	=	LOT SURVEY VOLUME 19, PAGE 12
R.R. 8-29	=	ROAD RECORD VOLUME 8, PAGE 29
R/W	=	RIGHT OF WAY
CL	=	CENTERLINE
AC.	=	ACRES
TWP.	=	TOWNSHIP
TR.	=	TRACT
②	=	LOT CREATED BY RECORDER'S PLAT

LINE LEGEND	
	Blow-up Boundary
	Property Line
	Lot Split Line
	Section Line
	Centerline
	Right-of-Way Line
	Corporation Line

SURVEY INDEX		
LND. 2-93	REC. 1-112	R.S. 37
LND. 2-128	REC. 7-48	
LND. 8-3	REC. 15-132	
LND. 8-50	REC. 17-4	
LND. 9-141		
LND. 13-46		
LND. 13-182		
LND. 14-106		
LND. 17-98		
LND. 18-132		
LND. 20-110		
LND. 26-189		
LND. 27-103		
LND. 29-103		
LND. 36-180		
LND. 60-47		



PREPARED BY: MIAMI COUNTY ENGINEER'S MAP DEPARTMENT
PAUL P. HUELSKAMP, P.E., P.S., COUNTY ENGINEER
DATE: NOVEMBER 6, 1992
REVISED: March 18, 2022 MSTORES