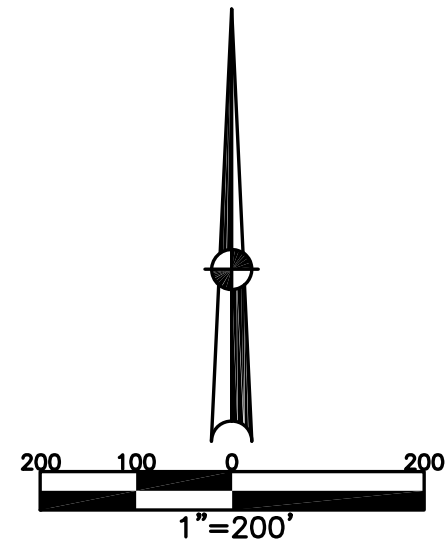


WASHINGTON TWP.
MIAMI COUNTY, OHIO

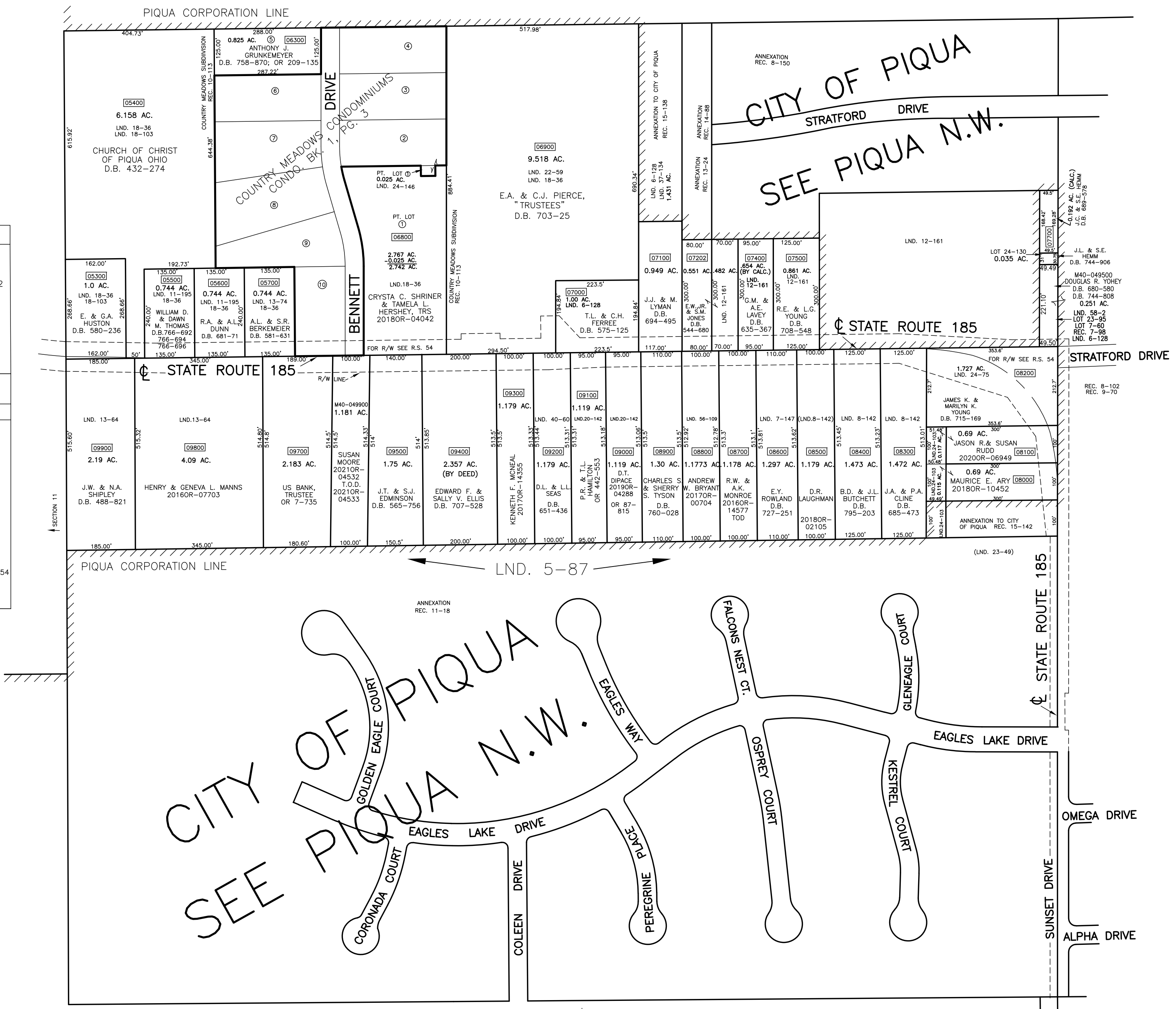
SOUTHWEST QUARTER
SECTION 12 TOWN 8 RANGE 5

PARCEL NUMBER
M40-_____

PLAT 8A



ABBREVIATION LEGEND		
2014OR-07759 = RECORDER'S DOCUMENT NUMBER OR 61-208 = OFFICIAL RECORD 61 PAGE 208		
D.B. 613-172 = DEED BOOK 613, PAGE 172		
REC. 15-72 = RECORDER'S PLAT BOOK 15, PAGE 72		
LND. 33-15 = LAND SURVEY VOLUME 33, PAGE 15		
LOT. 19-12 = LOT SURVEY VOLUME 19, PAGE 12		
R.R. 8-29 = ROAD RECORD VOLUME 8, PAGE 29		
R/W = RIGHT OF WAY		
C = CENTERLINE		
AC. = ACRES		
TWP. = TOWNSHIP		
② = LOT CREATED BY RECORDER'S PLAT TRACT		
SURVEY INDEX		
SOUTHWEST QUARTER		
LND. 3-231	LND. 56-109	LOT 7-60
LND. 5-87	LND. 58-2	LOT 23-95
LND. 6-128		LOT 24-130
LND. 7-147		
LND. 8-142		
LND. 8-159		
LND. 11-195		REC. 7-98
LND. 12-161		REC. 8-102
LND. 13-64		REC. 8-150
LND. 13-74		REC. 9-70
LND. 15-62		REC. 10-113
LND. 18-36		REC. 11-18
LND. 18-103		REC. 13-24
LND. 20-142		REC. 15-138
LND. 22-59		REC. 15-142
LND. 23-49		
LND. 24-75		CONDO 1-3
LND. 24-103		R/W SR 185 RS 54
LND. 24-146		
LND. 37-134		
LND. 40-60		



PREPARED BY: MIAMI COUNTY ENGINEER'S MAP DEPARTMENT
PAUL P. HUELSKAMP, COUNTY ENGINEER
DATE: AUGUST, 1991
REVISED: March 18, 2021 M5TORMS

SECTION 13